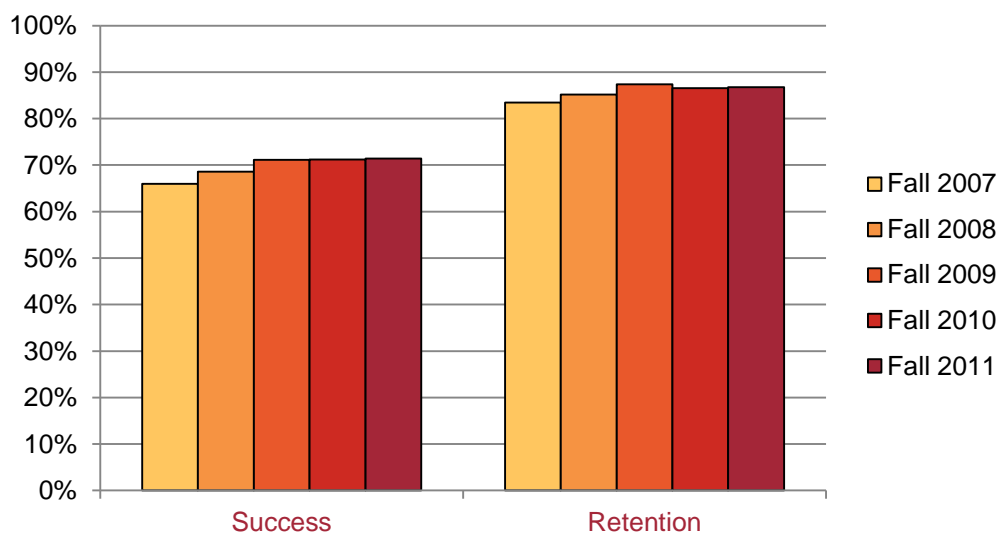


Success and Retention

Two common indicators of student performance, which are used statewide, are success and retention rates. The success rate is the percentage of students who received a grade of A, B, C, or P. The retention rate is the percentage of students who did not receive a W. Both rates improved in Fall 2008 and Fall 2009 and have been close to steady since then.

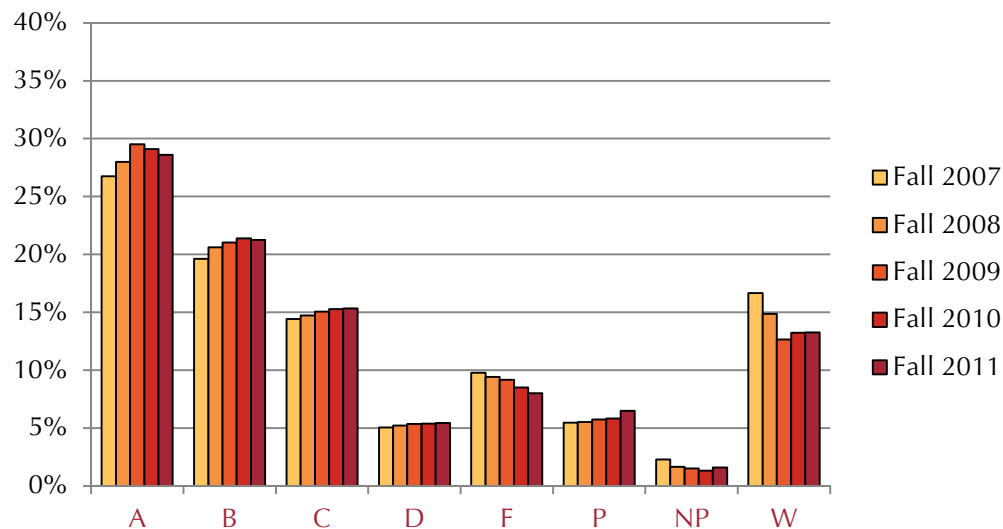


Success and Retention

	Fall 2007	Fall 2008	Fall 2009	Fall 2010	Fall 2011
Percent					
Success	66.0%	68.6%	71.2%	71.2%	71.4%
Retention	83.4%	85.2%	87.4%	86.5%	86.8%

Grade Distribution

From Fall 2007 to Fall 2009 the percentage of Ws dropped from 16.6% of grades to 13.3%. Over this same period, A grades increased from 26.8% to 29.5%, before dropping back somewhat to 28.6%. The percentages of B's and C's increased until Fall 2010. The frequency of F grades has steadily decreased over the five years reported.

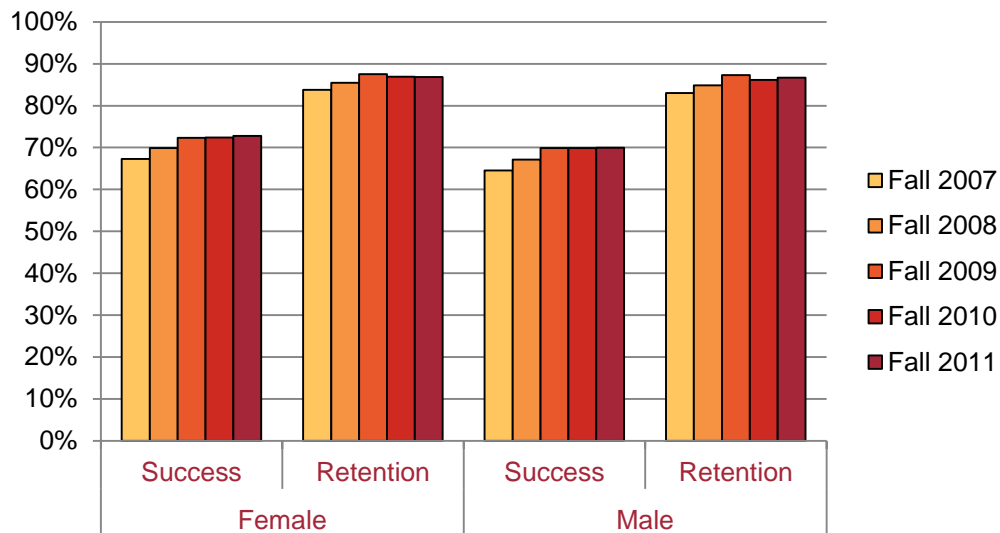


Grade Distribution

		Fall 2007	Fall 2008	Fall 2009	Fall 2010	Fall 2011
<i>Count</i>						
A		20026	21816	22828	23252	21992
B		14686	16065	16277	17083	16346
C		10787	11479	11658	12204	11795
D		3771	4073	4142	4299	4183
F		7314	7335	7092	6788	6158
P		4079	4293	4437	4662	4991
NP		1711	1294	1162	1058	1220
W		12457	11577	9782	10565	10199
	<i>Total</i>	<i>74831</i>	<i>77932</i>	<i>77378</i>	<i>79911</i>	<i>76884</i>
<i>Percent</i>						
A		26.8%	28.0%	29.5%	29.1%	28.6%
B		19.6%	20.6%	21.0%	21.4%	21.3%
C		14.4%	14.7%	15.1%	15.3%	15.3%
D		5.0%	5.2%	5.4%	5.4%	5.4%
F		9.8%	9.4%	9.2%	8.5%	8.0%
P		5.5%	5.5%	5.7%	5.8%	6.5%
NP		2.3%	1.7%	1.5%	1.3%	1.6%
W		16.6%	14.9%	12.6%	13.2%	13.3%

Success and Retention by Gender

Men and women show similar patterns of success and retention over time.



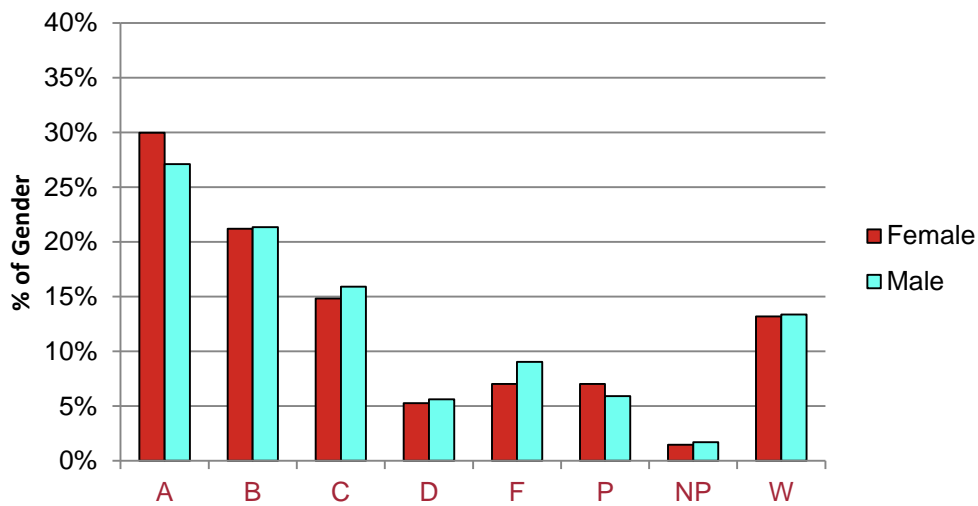
Success and Retention by Gender

		Fall 2007	Fall 2008	Fall 2009	Fall 2010	Fall 2011
Female	Success	67.3%	69.9%	72.3%	72.4%	72.8%
	Retention	83.8%	85.5%	87.5%	86.9%	86.8%
Male	Success	64.5%	67.1%	69.9%	69.9%	70.0%
	Retention	83.0%	84.9%	87.3%	86.1%	86.7%

Fall 2011

Grades by Gender

Women are more likely to receive A and P grades than men, who are more likely to receive C or F grades.

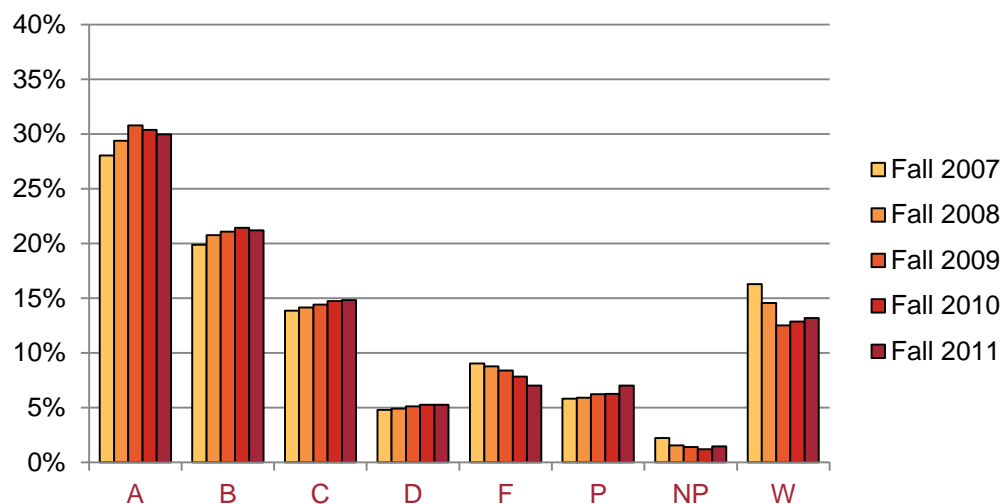


Fall 2011

Grades by Gender

	Female	Male
Percent		
A	30.0%	27.1%
B	21.2%	21.3%
C	14.8%	15.9%
D	5.3%	5.6%
F	7.0%	9.0%
P	7.0%	5.9%
NP	1.5%	1.7%
W	13.2%	13.4%

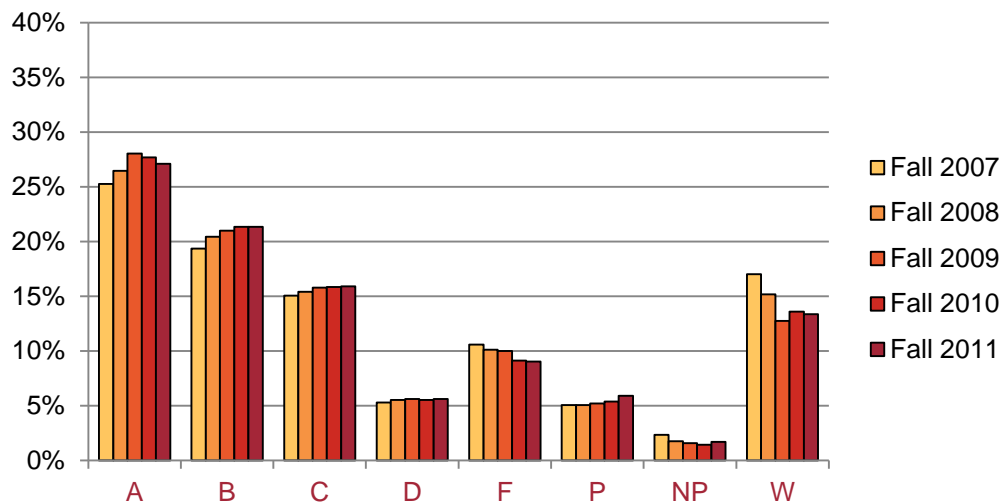
Grades Female



Grades Female

	Fall 2007	Fall 2008	Fall 2009	Fall 2010	Fall 2011
Count					
A	11035	11949	12352	12361	11742
B	7824	8442	8460	8719	8305
C	5454	5754	5787	6003	5809
D	1893	2008	2054	2140	2070
F	3563	3566	3374	3196	2754
P	2289	2407	2497	2552	2751
NP	883	633	570	490	576
W	6410	5928	5025	5233	5166
Total	39351	40687	40119	40694	39173
Percent					
A	28.0%	29.4%	30.8%	30.4%	30.0%
B	19.9%	20.7%	21.1%	21.4%	21.2%
C	13.9%	14.1%	14.4%	14.8%	14.8%
D	4.8%	4.9%	5.1%	5.3%	5.3%
F	9.1%	8.8%	8.4%	7.9%	7.0%
P	5.8%	5.9%	6.2%	6.3%	7.0%
NP	2.2%	1.6%	1.4%	1.2%	1.5%
W	16.3%	14.6%	12.5%	12.9%	13.2%

Grades Male

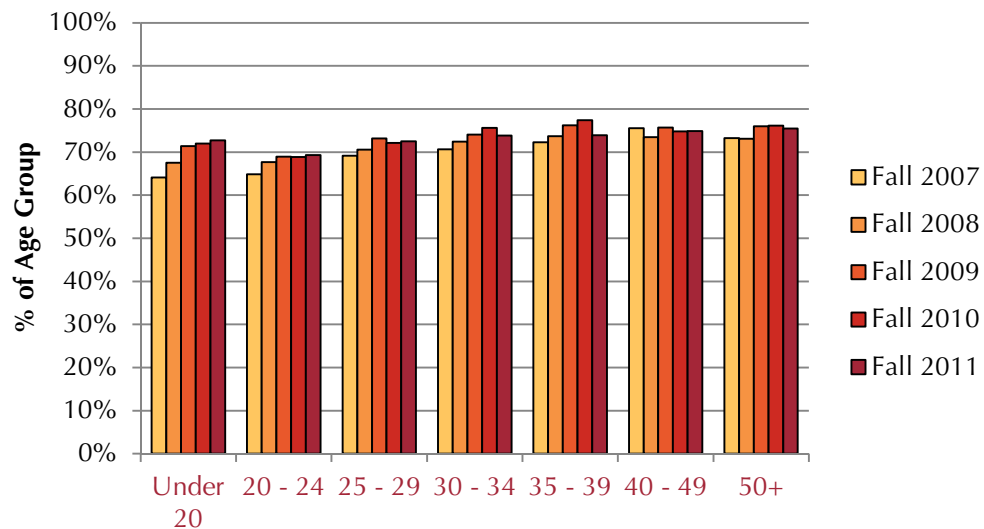


Grades Male

	Fall 2007	Fall 2008	Fall 2009	Fall 2010	Fall 2011
Count					
A	8902	9754	10347	10757	10134
B	6815	7539	7743	8295	7978
C	5308	5687	5832	6157	5944
D	1866	2045	2070	2148	2101
F	3728	3729	3690	3551	3384
P	1782	1864	1923	2092	2215
NP	827	656	584	563	641
W	5996	5595	4709	5283	4998
Total	35224	36869	36898	38846	37395
Percent					
A	25.3%	26.5%	28.0%	27.7%	27.1%
B	19.3%	20.4%	21.0%	21.4%	21.3%
C	15.1%	15.4%	15.8%	15.8%	15.9%
D	5.3%	5.5%	5.6%	5.5%	5.6%
F	10.6%	10.1%	10.0%	9.1%	9.0%
P	5.1%	5.1%	5.2%	5.4%	5.9%
NP	2.3%	1.8%	1.6%	1.4%	1.7%
W	17.0%	15.2%	12.8%	13.6%	13.4%

Success Rate by Age

All the age groups under age 40 show an increase in success rates until Fall 2009 or Fall 2010, and a more neutral or declining pattern since then. The strongest increase was for the under 20 age group.



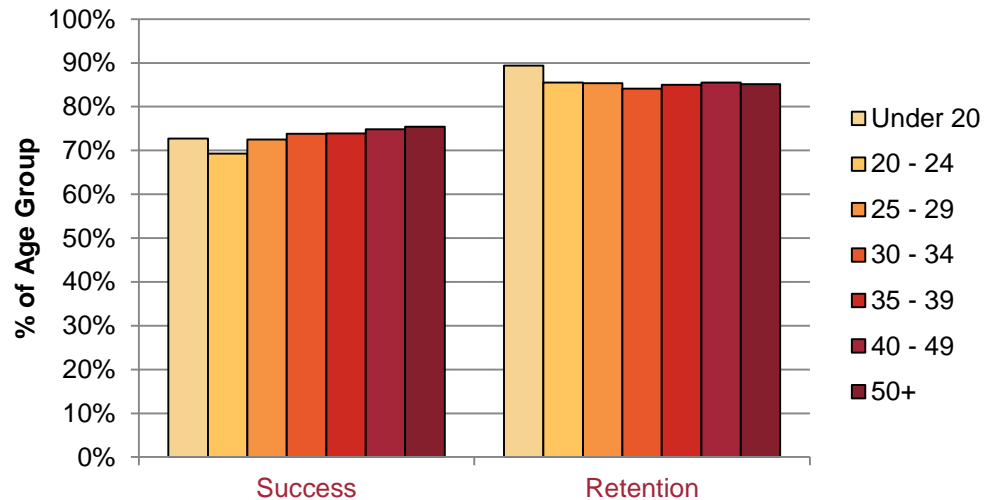
Success Rate by Age

	Fall 2007	Fall 2008	Fall 2009	Fall 2010	Fall 2011
<i>Percent</i>					
Under 20	64.1%	67.5%	71.4%	72.0%	72.7%
20 - 24	64.9%	67.7%	69.0%	68.9%	69.3%
25 - 29	69.2%	70.6%	73.2%	72.1%	72.5%
30 - 34	70.7%	72.4%	74.1%	75.6%	73.8%
35 - 39	72.3%	73.7%	76.2%	77.4%	73.9%
40 - 49	75.5%	73.5%	75.7%	74.8%	74.9%
50+	73.3%	73.1%	76.0%	76.1%	75.4%

Fall 2011

Success and Retention by Age

Students under the age of 20 have a higher retention rate than other students. Success rates are lowest for students age 20 to 24, and increase with increasing age.

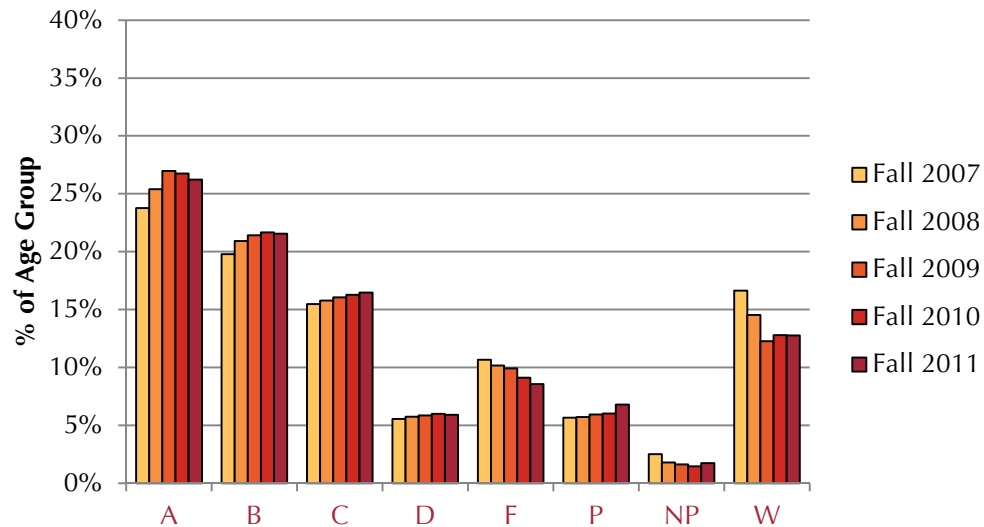


**Fall 2011
Success and Retention
by Age**

	Under 20	20 - 24	25 - 29	30 - 34	35 - 39	40 - 49	50+
Percent of Age Group							
Success	72.7%	69.3%	72.5%	73.8%	73.9%	74.9%	75.4%
Retention	89.4%	85.5%	85.3%	84.2%	85.0%	85.5%	85.2%

Students Under Age 25 Grades

Since students under the age of 25 comprise about 70% of the general PCC credit student population it is not surprising that the pattern of changes in grades for this group closely mirror the overall grade pattern.



Students Under Age 25 Grades

	Fall 2007	Fall 2008	Fall 2009	Fall 2010	Fall 2011
<i>Count</i>					
A	13815	15400	16155	16627	15651
B	11512	12690	12840	13465	12860
C	9000	9565	9615	10121	9830
D	3229	3473	3501	3719	3518
F	6197	6169	5934	5668	5112
P	3283	3461	3556	3733	4050
NP	1450	1080	969	908	1041
W	9682	8806	7355	7949	7621
<i>Total</i>	<i>16663</i>	<i>17288</i>	<i>17453</i>	<i>17721</i>	<i>17201</i>
<i>Percent of Age Group</i>					
A	23.8%	25.4%	27.0%	26.7%	26.2%
B	19.8%	20.9%	21.4%	21.7%	21.5%
C	15.5%	15.8%	16.0%	16.3%	16.5%
D	5.6%	5.7%	5.8%	6.0%	5.9%
F	10.7%	10.2%	9.9%	9.1%	8.6%
P	5.6%	5.7%	5.9%	6.0%	6.8%
NP	2.5%	1.8%	1.6%	1.5%	1.7%
W	16.6%	14.5%	12.3%	12.8%	12.8%

Students Age 25 and Up Grades

The strong decrease in W's and F's and the increase in A's seen in younger students is much less visible in the grades of students age 25 and up.

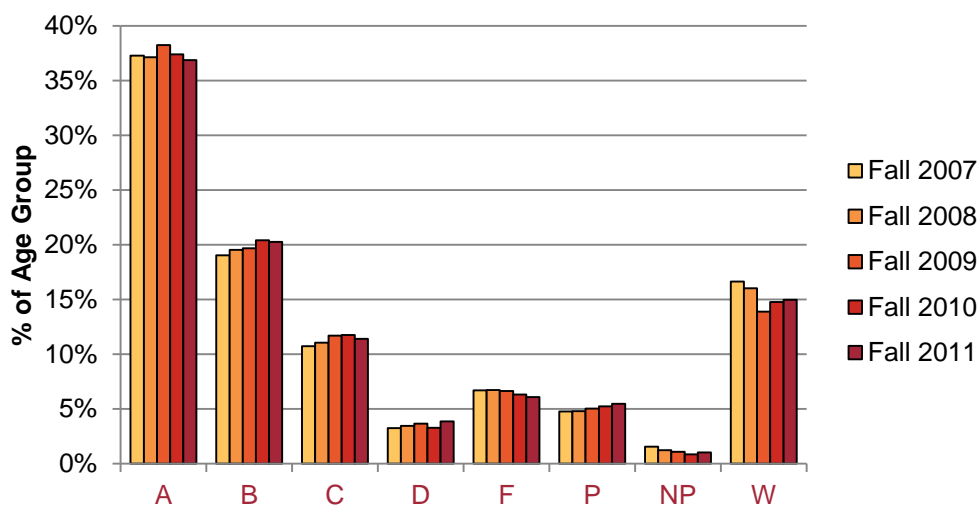


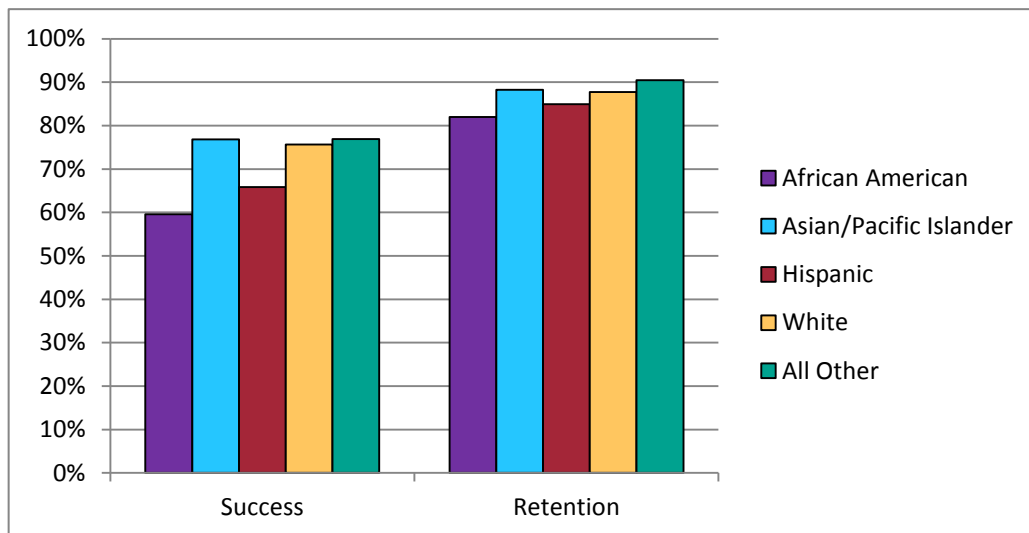
Table n-n
Students Age 25 and Up
Grades

	Fall 2007	Fall 2008	Fall 2009	Fall 2010	Fall 2011
<i>Count</i>					
A	6211	6416	6673	6625	6341
B	3174	3375	3437	3618	3486
C	1787	1914	2043	2083	1965
D	542	600	641	580	665
F	1117	1166	1158	1120	1046
P	796	832	881	929	941
NP	261	214	193	150	179
W	2775	2771	2427	2616	2578
<i>Total</i>	16663	17288	17453	17721	17201
<i>Percent of Age Group</i>					
A	37.3%	37.1%	38.2%	37.4%	36.9%
B	19.0%	19.5%	19.7%	20.4%	20.3%
C	10.7%	11.1%	11.7%	11.8%	11.4%
D	3.3%	3.5%	3.7%	3.3%	3.9%
F	6.7%	6.7%	6.6%	6.3%	6.1%
P	4.8%	4.8%	5.0%	5.2%	5.5%
NP	1.6%	1.2%	1.1%	0.8%	1.0%
W	16.7%	16.0%	13.9%	14.8%	15.0%

Fall 2011

Success and Retention by Ethnicity

Both success and retention rates show the same pattern by ethnicity. The lowest rates are shown by African Americans. The Hispanic rates are somewhat higher. And the rates for Whites, Asian/Pacific Islanders, and all other ethnicities are closely grouped at the top.



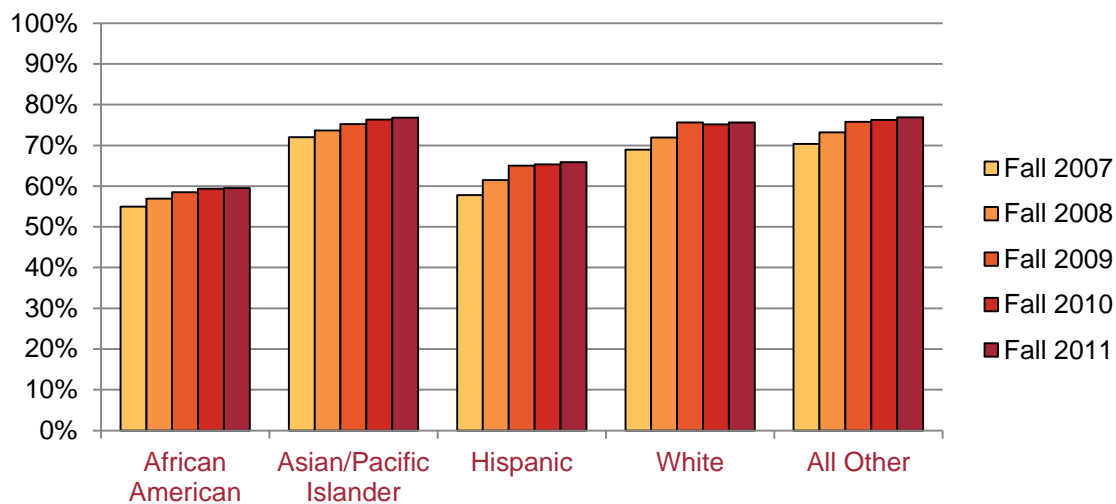
Fall 2011

Success and Retention by Ethnicity

	Success	Retention
Percent		
African American	59.5%	81.9%
Asian/Pacific Islander	76.8%	88.2%
Hispanic	65.9%	84.9%
White	75.6%	87.7%
All Other	76.9%	90.5%

Success by Ethnicity

All ethnic groups posted two years of larger gains in success rates followed by two years of weaker progress. Hispanics showed the largest gains, increasing by 8.1 percentage points over the five years.



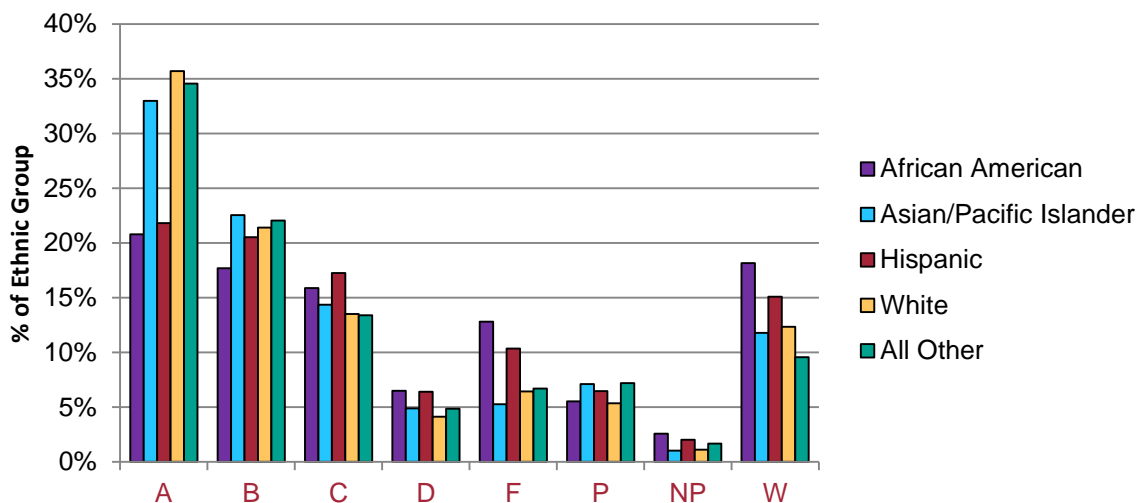
Success by Ethnicity

	Fall 2007	Fall 2008	Fall 2009	Fall 2010	Fall 2011
<i>Percent</i>					
African American	55.0%	56.9%	58.5%	59.4%	59.5%
Asian/Pacific Islander	72.0%	73.7%	75.2%	76.3%	76.8%
Hispanic	57.8%	61.5%	65.0%	65.3%	65.9%
White	68.9%	72.0%	75.6%	75.1%	75.6%
All Other	70.3%	73.2%	75.8%	76.2%	76.9%

Fall 2011

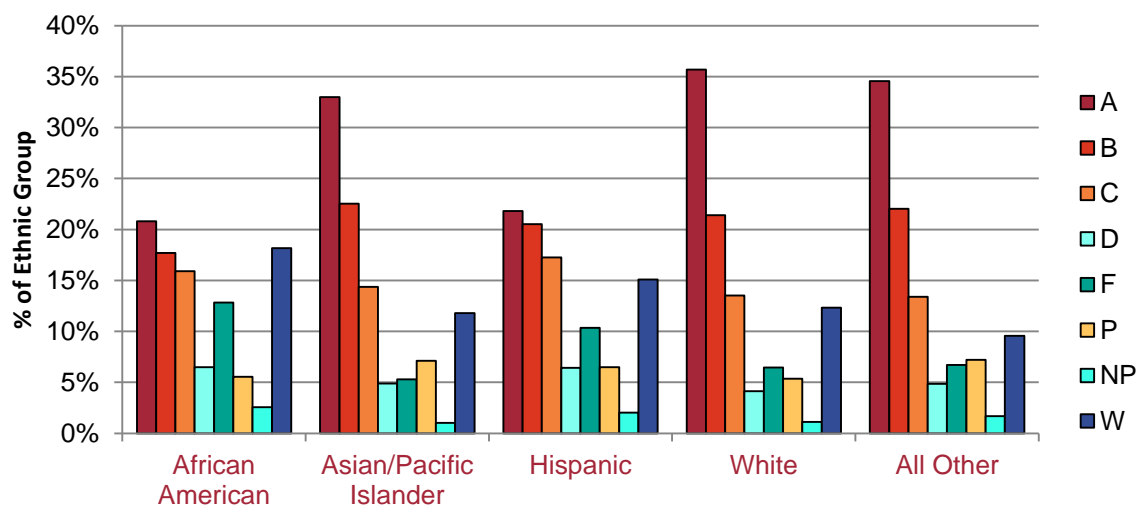
Grades by Ethnicity

The major differences in the patterns of grades by ethnicity are in the percentage of a given ethnic group who receive A's, F's, and W's.



Fall 2011

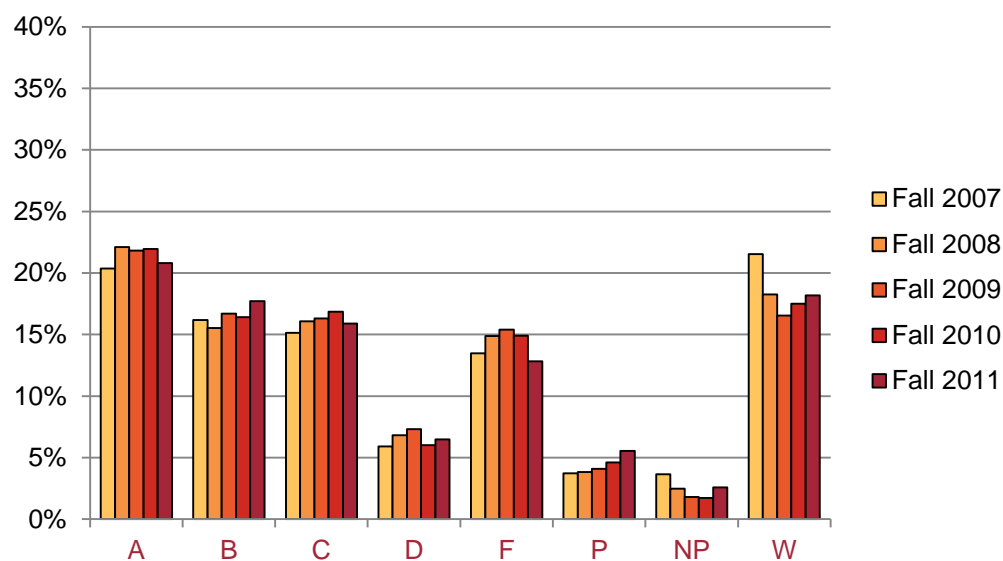
Grades by Ethnicity



Fall 2011
Grades by Ethnicity

	A	B	C	D	F	P	NP	W
<i>Percent of Ethnic Group</i>								
African American	20.8%	17.7%	15.9%	6.5%	12.8%	5.5%	2.6%	18.2%
Asian/Pacific Islander	33.0%	22.5%	14.4%	4.9%	5.3%	7.1%	1.0%	11.8%
Hispanic	21.8%	20.5%	17.3%	6.4%	10.4%	6.5%	2.0%	15.1%
White	35.7%	21.4%	13.5%	4.1%	6.5%	5.4%	1.1%	12.3%
All Other	34.6%	22.0%	13.4%	4.9%	6.7%	7.2%	1.7%	9.6%

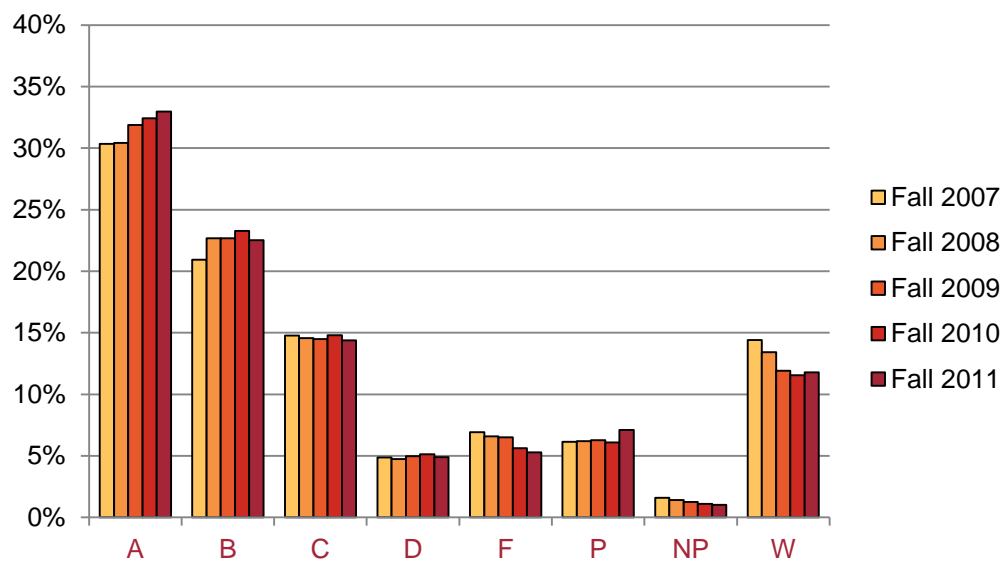
Grades African-American



Grades African-American

	Fall 2007	Fall 2008	Fall 2009	Fall 2010	Fall 2011
Count					
A	791	933	817	890	759
B	628	655	626	665	646
C	588	679	611	683	580
D	229	288	274	244	237
F	523	628	577	604	468
P	145	162	153	187	202
NP	142	105	68	70	94
W	836	771	620	710	663
Total	3882	4221	3746	4053	3649
Percent					
A	20.4%	22.1%	21.8%	22.0%	20.8%
B	16.2%	15.5%	16.7%	16.4%	17.7%
C	15.1%	16.1%	16.3%	16.9%	15.9%
D	5.9%	6.8%	7.3%	6.0%	6.5%
F	13.5%	14.9%	15.4%	14.9%	12.8%
P	3.7%	3.8%	4.1%	4.6%	5.5%
NP	3.7%	2.5%	1.8%	1.7%	2.6%
W	21.5%	18.3%	16.6%	17.5%	18.2%

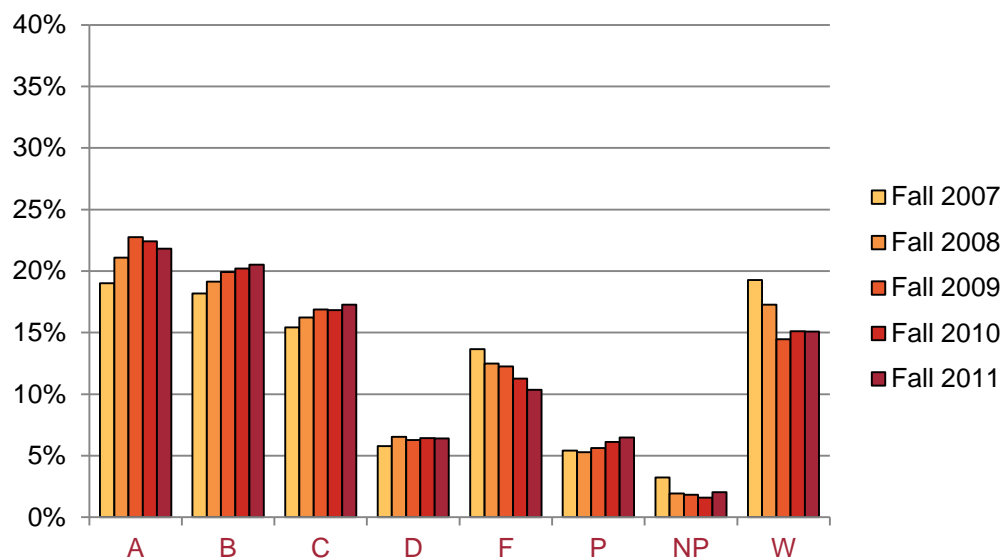
Grades Asian



Grades Asian

	Fall 2007	Fall 2008	Fall 2009	Fall 2010	Fall 2011
Count					
A	7749	7736	7902	7811	7012
B	5349	5767	5620	5611	4791
C	3775	3702	3589	3567	3057
D	1247	1205	1233	1237	1042
F	1767	1676	1616	1354	1123
P	1570	1574	1557	1468	1513
NP	407	360	313	263	219
W	3679	3414	2955	2784	2509
<i>Total</i>	<i>25543</i>	<i>25434</i>	<i>24785</i>	<i>24095</i>	<i>21266</i>
Percent					
A	30.3%	30.4%	31.9%	32.4%	33.0%
B	20.9%	22.7%	22.7%	23.3%	22.5%
C	14.8%	14.6%	14.5%	14.8%	14.4%
D	4.9%	4.7%	5.0%	5.1%	4.9%
F	6.9%	6.6%	6.5%	5.6%	5.3%
P	6.1%	6.2%	6.3%	6.1%	7.1%
NP	1.6%	1.4%	1.3%	1.1%	1.0%
W	14.4%	13.4%	11.9%	11.6%	11.8%

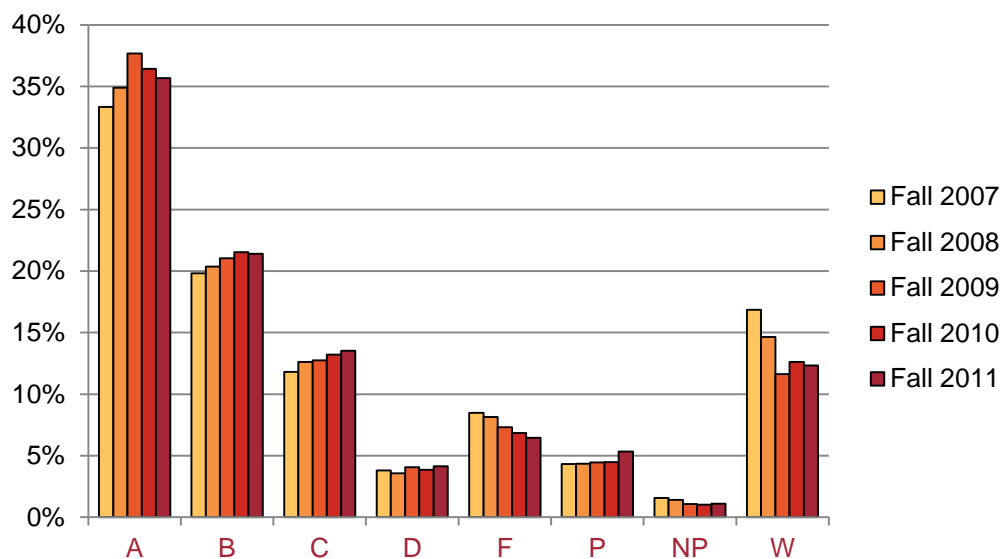
Grades Hispanic



Grades Hispanic

	Fall 2007	Fall 2008	Fall 2009	Fall 2010	Fall 2011
Count					
A	4421	5172	5846	6556	6654
B	4230	4690	5116	5908	6263
C	3589	3978	4338	4922	5266
D	1343	1599	1613	1881	1958
F	3176	3063	3151	3292	3161
P	1260	1294	1446	1792	1978
NP	751	477	467	464	623
W	4481	4233	3716	4415	4605
Total	23251	24506	25693	29230	30508
Percent					
A	19.0%	21.1%	22.8%	22.4%	21.8%
B	18.2%	19.1%	19.9%	20.2%	20.5%
C	15.4%	16.2%	16.9%	16.8%	17.3%
D	5.8%	6.5%	6.3%	6.4%	6.4%
F	13.7%	12.5%	12.3%	11.3%	10.4%
P	5.4%	5.3%	5.6%	6.1%	6.5%
NP	3.2%	1.9%	1.8%	1.6%	2.0%
W	19.3%	17.3%	14.5%	15.1%	15.1%

Grades White

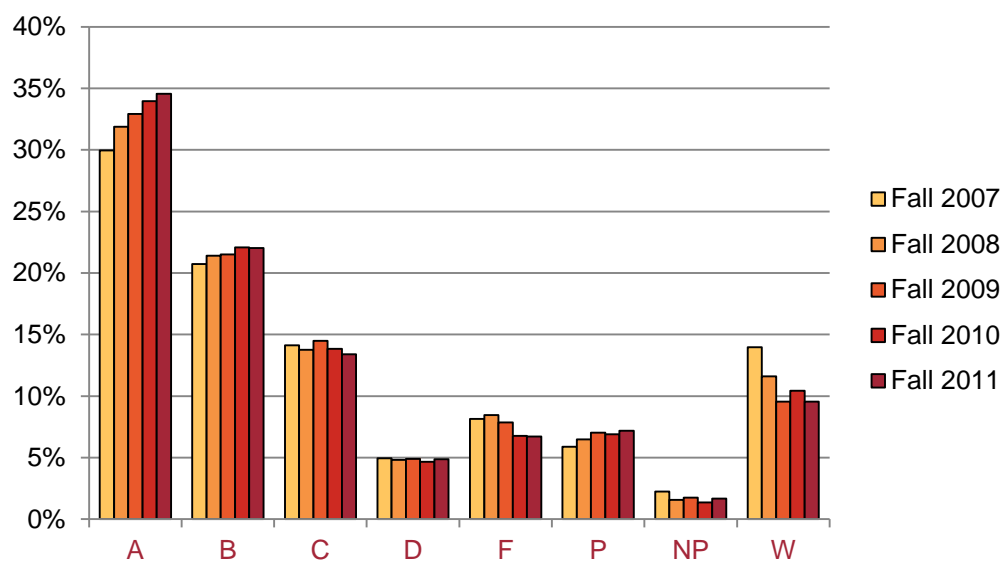


Grades White

	Fall 2007	Fall 2008	Fall 2009	Fall 2010	Fall 2011
Count					
A	4231	4579	5076	5077	4768
B	2517	2673	2834	3002	2861
C	1498	1654	1718	1842	1806
D	483	468	549	537	552
F	1077	1068	987	956	862
P	548	572	601	623	715
NP	198	184	145	144	149
W	2140	1922	1566	1759	1648
Total	12692	13120	13476	13940	13361
Percent					
A	33.3%	34.9%	37.7%	36.4%	35.7%
B	19.8%	20.4%	21.0%	21.5%	21.4%
C	11.8%	12.6%	12.7%	13.2%	13.5%
D	3.8%	3.6%	4.1%	3.9%	4.1%
F	8.5%	8.1%	7.3%	6.9%	6.5%
P	4.3%	4.4%	4.5%	4.5%	5.4%
NP	1.6%	1.4%	1.1%	1.0%	1.1%
W	16.9%	14.6%	11.6%	12.6%	12.3%

Grades

All Other Ethnicities



Grades

All Other Ethnicities

	Fall 2007	Fall 2008	Fall 2009	Fall 2010	Fall 2011
<i>Count</i>					
A	2834	3396	3187	2918	2799
B	1962	2280	2081	1897	1785
C	1337	1466	1402	1190	1086
D	469	513	473	400	394
F	771	900	761	582	544
P	556	691	680	592	583
NP	213	168	169	117	135
W	1321	1237	925	897	774
<i>Total</i>	<i>9463</i>	<i>10651</i>	<i>9678</i>	<i>8593</i>	<i>8100</i>

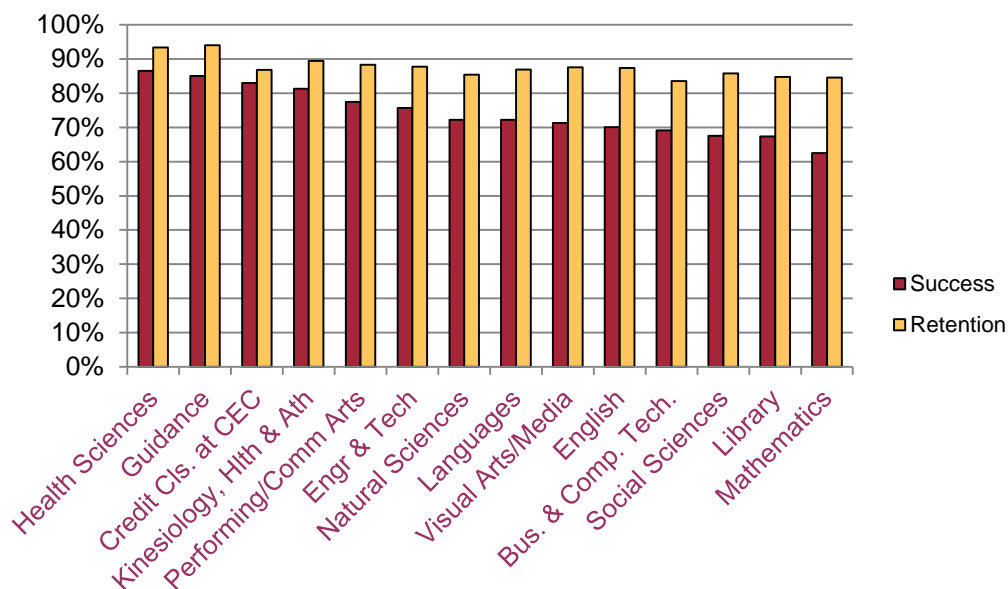
<i>Percent</i>					
A	29.9%	31.9%	32.9%	34.0%	34.6%
B	20.7%	21.4%	21.5%	22.1%	22.0%
C	14.1%	13.8%	14.5%	13.8%	13.4%
D	5.0%	4.8%	4.9%	4.7%	4.9%
F	8.1%	8.4%	7.9%	6.8%	6.7%
P	5.9%	6.5%	7.0%	6.9%	7.2%
NP	2.3%	1.6%	1.7%	1.4%	1.7%
W	14.0%	11.6%	9.6%	10.4%	9.6%

Fall 2011

Success and Retention

Division

Although the various divisions can be arranged along a rather smooth progression based on success and retention rates, this similarity masks large differences in the grade distributions of each of the divisions.



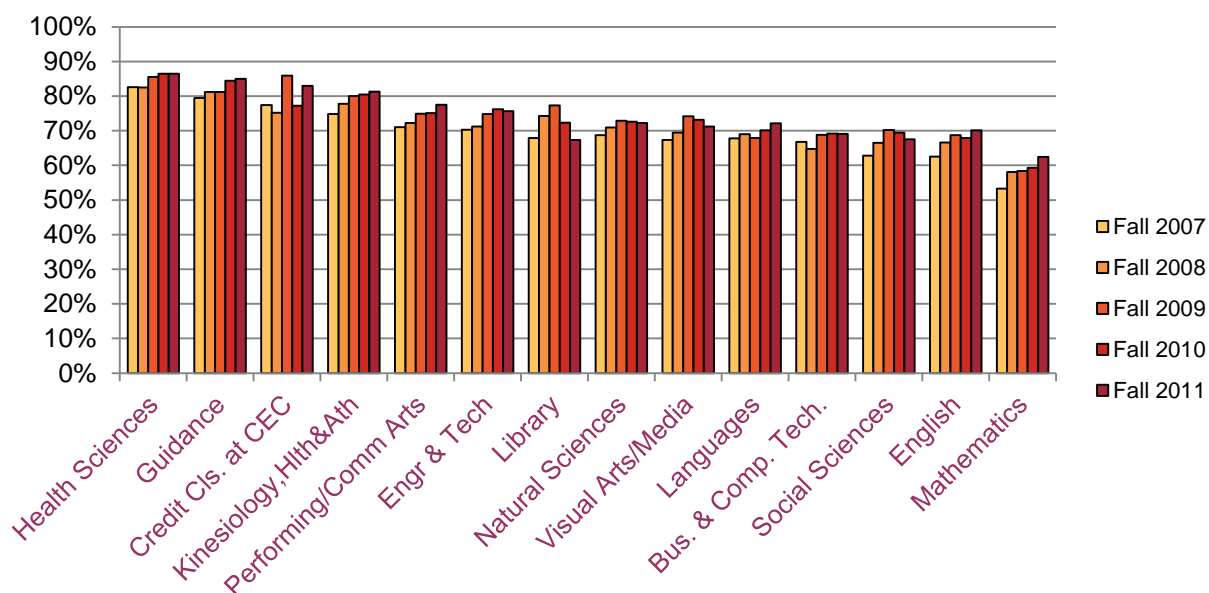
Fall 2011

Success and Retention

Division

	Success	Retention
Health Sciences	86.5%	93.3%
Guidance	85.0%	94.0%
Credit Cls. at CEC	82.9%	86.8%
Kinesiology, Hlth & Ath	81.3%	89.4%
Performing/Comm Arts	77.5%	88.3%
Engr & Tech	75.7%	87.7%
Natural Sciences	72.2%	85.4%
Languages	72.2%	86.9%
Visual Arts/Media	71.2%	87.6%
English	70.1%	87.3%
Bus. & Comp. Tech.	69.1%	83.5%
Social Sciences	67.5%	85.7%
Library	67.4%	84.7%
Mathematics	62.5%	84.6%
<i>All PCC</i>	71.4%	86.8%

Success Division



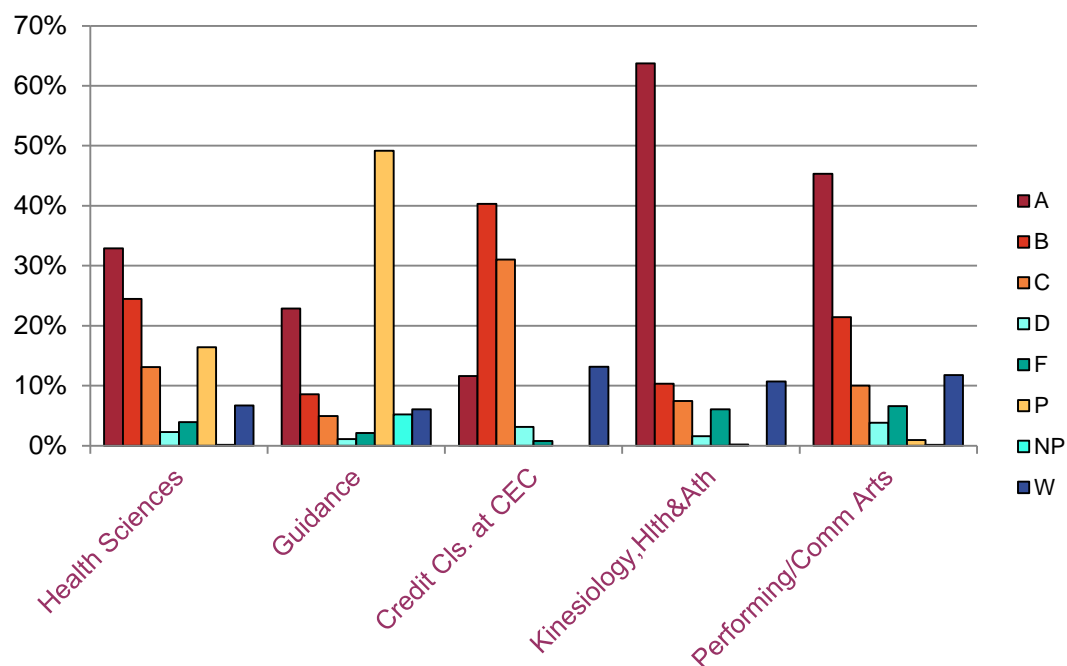
Success Division

	Fall 2007	Fall 2008	Fall 2009	Fall 2010	Fall 2011
Health Sciences	82.6%	82.5%	85.6%	86.5%	86.5%
Guidance	79.4%	81.2%	81.2%	84.4%	85.0%
Credit Cls. at CEC	77.4%	75.2%	85.9%	77.2%	82.9%
Kinesiology, Hlth&Ath	74.8%	77.8%	80.0%	80.4%	81.3%
Performing/Comm Arts	71.0%	72.2%	74.9%	75.1%	77.5%
Engr & Tech	70.3%	71.2%	74.8%	76.2%	75.7%
Library	67.9%	74.3%	77.3%	72.4%	67.4%
Natural Sciences	68.7%	70.9%	72.8%	72.6%	72.2%
Visual Arts/Media	67.3%	69.5%	74.1%	73.1%	71.2%
Languages	67.8%	69.0%	67.9%	70.1%	72.2%
Bus. & Comp. Tech.	66.8%	64.7%	68.8%	69.2%	69.1%
Social Sciences	62.8%	66.5%	70.2%	69.5%	67.5%
English	62.6%	66.6%	68.7%	67.9%	70.1%
Mathematics	53.3%	58.1%	58.3%	59.3%	62.5%

Fall 2011

Grades by Division (1)

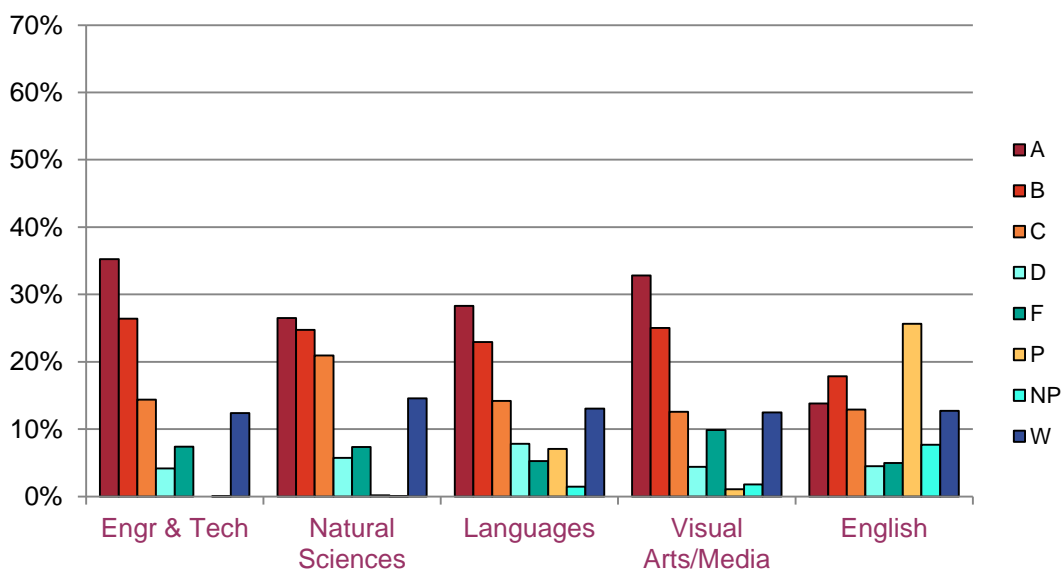
In Order by Success Rate



Fall 2011

Grades by Division (2)

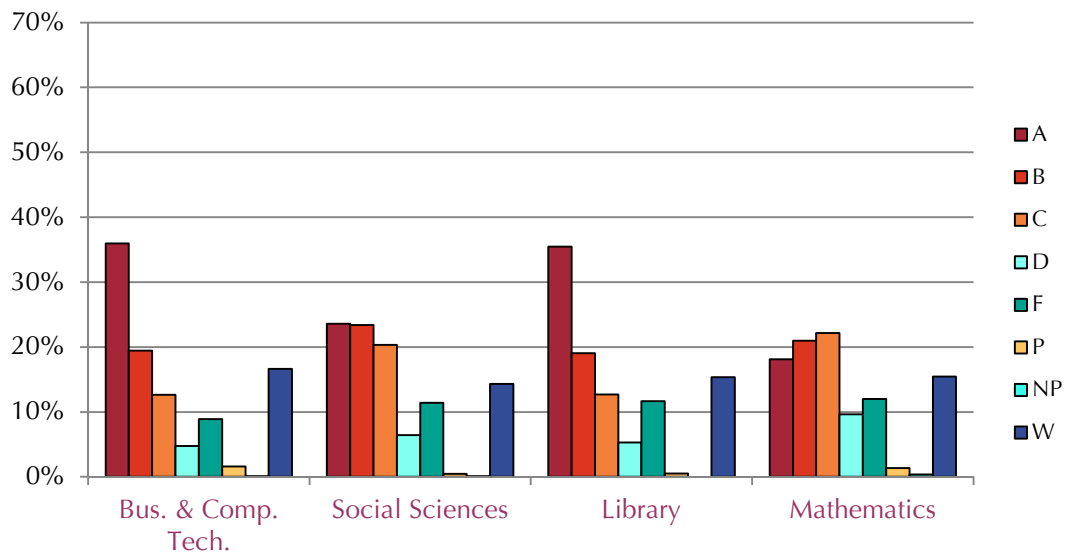
In Order by Success Rate



Fall 2011

Grades by Division (3)

In Order by Success Rate



Fall 2011
Grades by Division
In Order by Success Rate

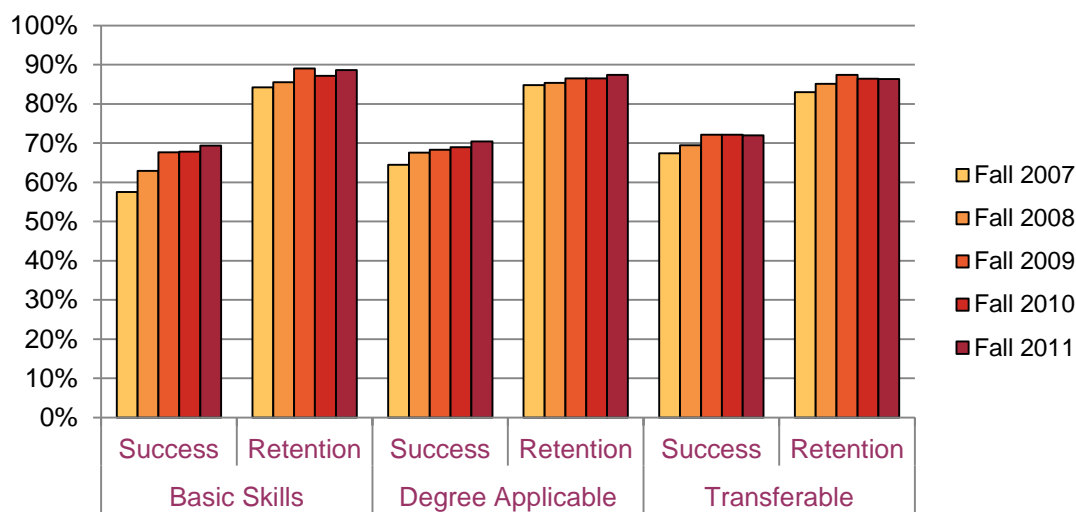
	A	B	C	D	F	P	NP	W	Total
<i>Count</i>									
Health Sciences	817	608	325	57	98	408	4	166	2483
Guidance	337	126	73	16	31	725	77	89	1474
Credit Cls. at CEC	15	52	40	4	1			17	129
Kinesiology, Hlth&Ath	2138	347	250	52	203	6		358	3354
Performing/Comm Arts	3608	1705	797	302	526	74	10	935	7957
Engr & Tech	1040	780	425	123	218		1	365	2952
Natural Sciences	1619	1511	1280	351	449	10	2	891	6113
Languages	1827	1481	915	505	338	457	93	843	6459
Visual Arts/Media	1835	1398	702	245	552	61	99	697	5589
English	1597	2069	1497	519	574	2969	888	1471	11584
Bus. & Comp. Tech.	2339	1266	823	309	579	103	4	1082	6505
Social Sciences	3249	3222	2803	890	1571	66	13	1972	13786
Library	67	36	24	10	22	1		29	189
Mathematics	1504	1745	1841	800	996	111	29	1284	8310
<i>Total</i>	<i>21992</i>	<i>16346</i>	<i>11795</i>	<i>4183</i>	<i>6158</i>	<i>4991</i>	<i>1220</i>	<i>10199</i>	<i>76884</i>

Fall 2011
Grades by Division
In Order by Success Rate

	A	B	C	D	F	P	NP	W
<i>Percent of Division</i>								
Health Sciences	32.9%	24.5%	13.1%	2.3%	3.9%	16.4%	0.2%	6.7%
Guidance	22.9%	8.5%	5.0%	1.1%	2.1%	49.2%	5.2%	6.0%
Credit Cls. at CEC	11.6%	40.3%	31.0%	3.1%	0.8%	0.0%	0.0%	13.2%
Kinesiology, Hlth&Ath	63.7%	10.3%	7.5%	1.6%	6.1%	0.2%	0.0%	10.7%
Performing/Comm Arts	45.3%	21.4%	10.0%	3.8%	6.6%	0.9%	0.1%	11.8%
Engr & Tech	35.2%	26.4%	14.4%	4.2%	7.4%	0.0%	0.0%	12.4%
Natural Sciences	26.5%	24.7%	20.9%	5.7%	7.3%	0.2%	0.0%	14.6%
Languages	28.3%	22.9%	14.2%	7.8%	5.2%	7.1%	1.4%	13.1%
Visual Arts/Media	32.8%	25.0%	12.6%	4.4%	9.9%	1.1%	1.8%	12.5%
English	13.8%	17.9%	12.9%	4.5%	5.0%	25.6%	7.7%	12.7%
Bus. & Comp. Tech.	36.0%	19.5%	12.7%	4.8%	8.9%	1.6%	0.1%	16.6%
Social Sciences	23.6%	23.4%	20.3%	6.5%	11.4%	0.5%	0.1%	14.3%
Library	35.4%	19.0%	12.7%	5.3%	11.6%	0.5%	0.0%	15.3%
Mathematics	18.1%	21.0%	22.2%	9.6%	12.0%	1.3%	0.3%	15.5%
<i>Total</i>	<i>28.6%</i>	<i>21.3%</i>	<i>15.3%</i>	<i>5.4%</i>	<i>8.0%</i>	<i>6.5%</i>	<i>1.6%</i>	<i>13.3%</i>

Success and Retention by Course Level

Academic performance improved for all course levels, with Fall 2008 and Fall 2009 showing the strongest improvement. The increases in success rate over the five years were 11.9 percentage points for basic skills courses, 6.0 percentage points for degree applicable courses, and 4.6 percentage points for transferable courses. All levels also show improvements in the retention rate. However, this improvement accounts for only three quarters of the improvement in the success rate for transferable courses, and less than half of the improvement in success for basic skills and degree applicable courses.



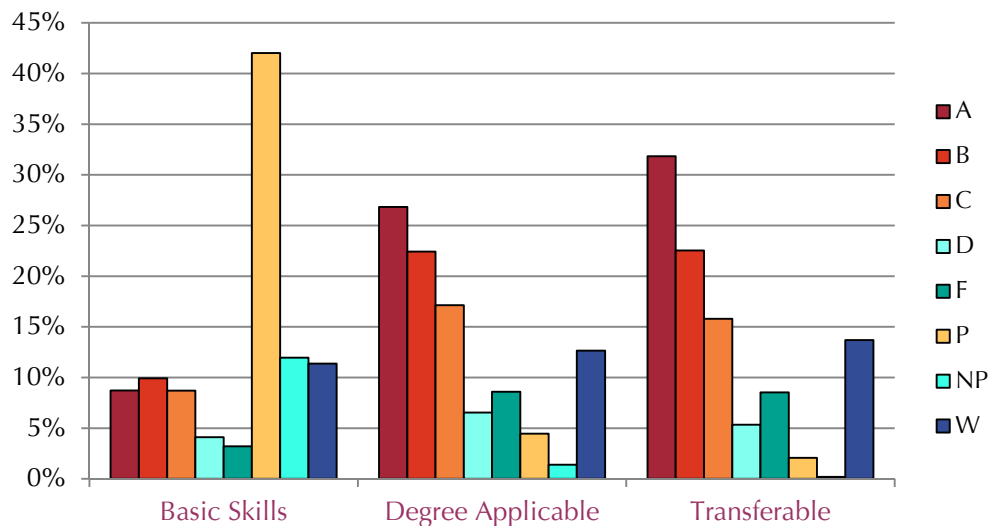
Success and Retention by Course Level

		Fall 2007	Fall 2008	Fall 2009	Fall 2010	Fall 2011
Basic Skills	Success	57.5%	62.9%	67.6%	67.8%	69.4%
	Retention	84.3%	85.5%	89.0%	87.2%	88.6%
Degree Applicable	Success	64.4%	67.6%	68.3%	69.0%	70.4%
	Retention	84.8%	85.4%	86.5%	86.5%	87.4%
Transferable	Success	67.4%	69.4%	72.2%	72.2%	72.0%
	Retention	83.0%	85.1%	87.4%	86.4%	86.3%

Fall 2011

Grades by Course Level

The major difference in grade pattern by course level is that 54.0% of basic skills enrollments are taken Pass/No Pass, compared to 5.8% for degree applicable courses and 2.3% for transferable courses. Also, transferable courses have more A's (31.8%) than degree applicable courses (26.8%).



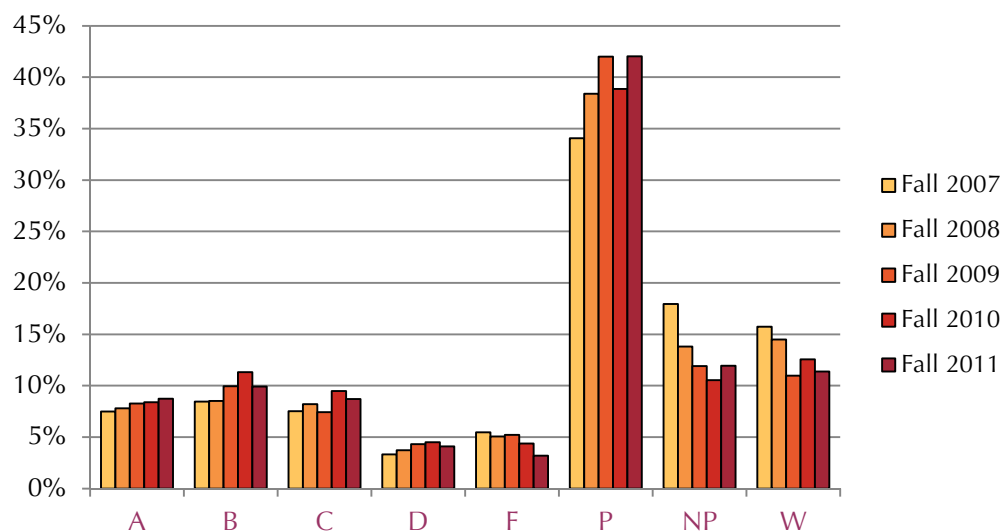
Fall 2011

Grades by Course Level

	Basic Skills	Degree Applicable	Transferable
Percent			
A	8.7%	26.8%	31.8%
B	9.9%	22.4%	22.5%
C	8.7%	17.1%	15.8%
D	4.1%	6.5%	5.3%
F	3.2%	8.6%	8.5%
P	42.0%	4.5%	2.1%
NP	12.0%	1.4%	0.2%
W	11.4%	12.6%	13.7%

Grades Basic Skills

Grades in basic skills courses have improved over the five years. In Fall 2008 and Fall 2009 Pass grades (P) increased while NP and W grades declined. Then, in Fall 2010 and Fall 2011, F grades decreased.

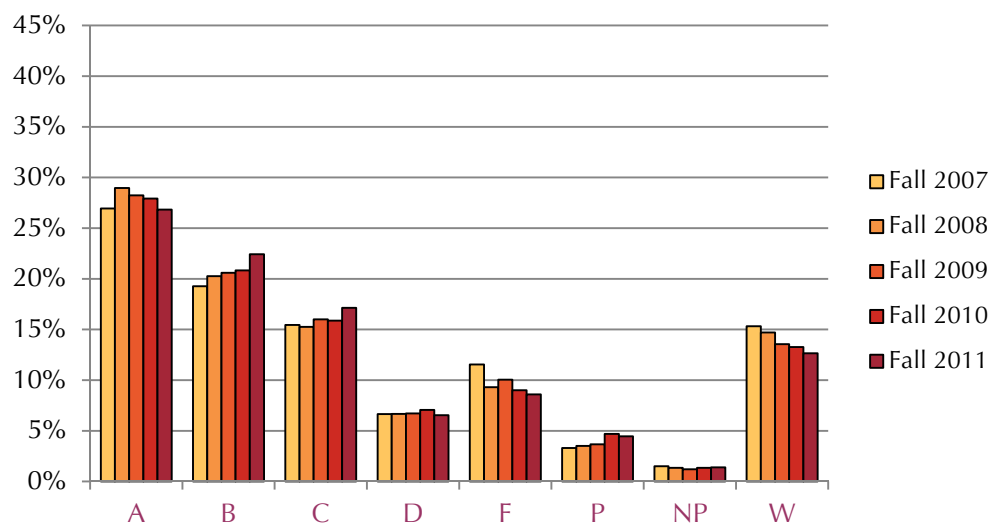


Grades Basic Skills

	Fall 2007	Fall 2008	Fall 2009	Fall 2010	Fall 2011
Count					
A	549	547	553	579	667
B	619	599	664	780	759
C	552	577	496	654	665
D	244	262	288	310	314
F	402	355	348	301	245
P	2499	2696	2806	2681	3213
NP	1316	969	795	726	914
W	1155	1018	733	866	869
Total	7336	7023	6683	6897	7646
Percent					
A	7.5%	7.8%	8.3%	8.4%	8.7%
B	8.4%	8.5%	9.9%	11.3%	9.9%
C	7.5%	8.2%	7.4%	9.5%	8.7%
D	3.3%	3.7%	4.3%	4.5%	4.1%
F	5.5%	5.1%	5.2%	4.4%	3.2%
P	34.1%	38.4%	42.0%	38.9%	42.0%
NP	17.9%	13.8%	11.9%	10.5%	12.0%
W	15.7%	14.5%	11.0%	12.6%	11.4%

Grades Degree Applicable

Grades in degree applicable courses have improved over the five years. The percentage of W grades dropped each year, and the percentage of F grades dropped in all but Fall 2009. Although more students passed each year, the pattern for A grades is not as clear. A grades increased 2.1 percentage points in Fall 2008, but the percentage of A grades then declined the next three Fall terms and is back where it started.

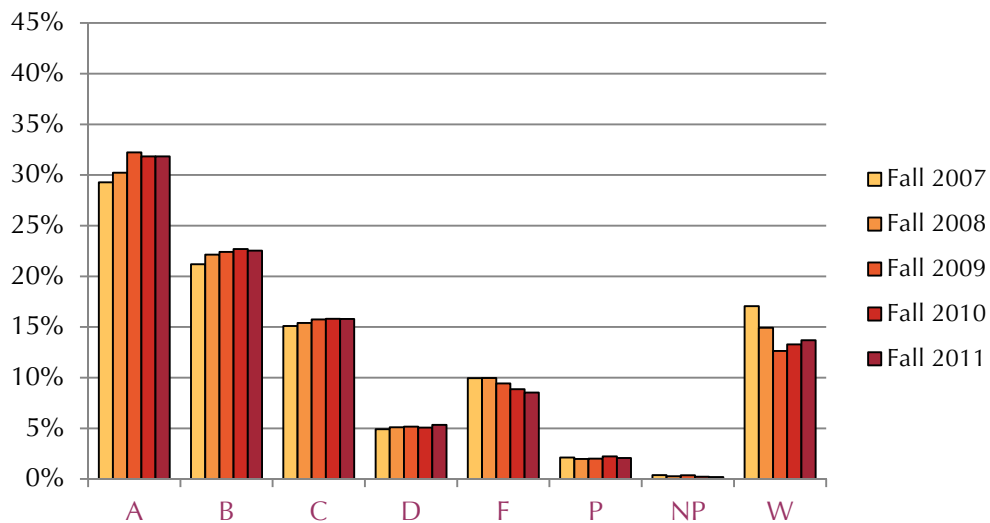


Grades **Degree Applicable**

	Fall 2007	Fall 2008	Fall 2009	Fall 2010	Fall 2011
<i>Count</i>					
A	3312	3648	3594	4051	3846
B	2369	2553	2621	3022	3214
C	1898	1921	2036	2303	2456
D	818	839	855	1025	938
F	1420	1171	1278	1307	1231
P	407	442	466	681	639
NP	184	169	153	196	199
W	1883	1853	1725	1926	1813
<i>Total</i>	<i>12291</i>	<i>12596</i>	<i>12728</i>	<i>14511</i>	<i>14336</i>
<i>Percent</i>					
A	26.9%	29.0%	28.2%	27.9%	26.8%
B	19.3%	20.3%	20.6%	20.8%	22.4%
C	15.4%	15.3%	16.0%	15.9%	17.1%
D	6.7%	6.7%	6.7%	7.1%	6.5%
F	11.6%	9.3%	10.0%	9.0%	8.6%
P	3.3%	3.5%	3.7%	4.7%	4.5%
NP	1.5%	1.3%	1.2%	1.4%	1.4%
W	15.3%	14.7%	13.6%	13.3%	12.6%

Grades Transferable

Grades in transferable courses improved Fall 2008 and Fall 2009, and have been steady since then. The improvements are the result of the percentage of W grades decreasing from 17.1% in Fall 2007 to 12.6% in Fall 2009. In the Fall terms of 2010 and 2011 there were increases in W grades, but this was almost exactly offset by decreases in F grades.



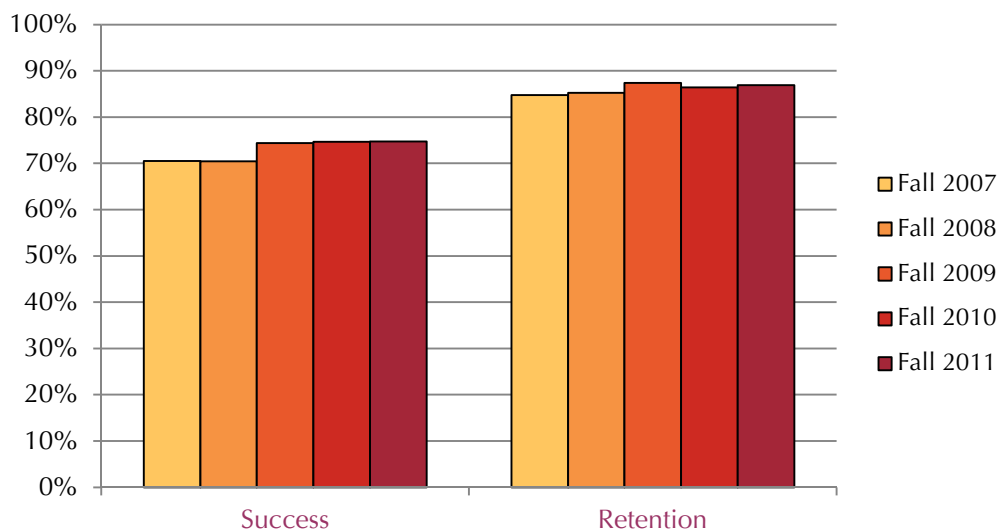
Grades Transferable

	Fall 2007	Fall 2008	Fall 2009	Fall 2010	Fall 2011
<i>Count</i>					
A	16165	17621	18681	18622	17479
B	11698	12913	12992	13281	12373
C	8337	8981	9126	9247	8674
D	2709	2972	2999	2964	2931
F	5492	5809	5466	5180	4682
P	1173	1155	1165	1300	1139
NP	211	156	214	136	107
W	9419	8706	7324	7773	7517
<i>Total</i>	55204	58313	57967	58503	54902
<i>Percent</i>					
A	29.3%	30.2%	32.2%	31.8%	31.8%
B	21.2%	22.1%	22.4%	22.7%	22.5%
C	15.1%	15.4%	15.7%	15.8%	15.8%
D	4.9%	5.1%	5.2%	5.1%	5.3%
F	9.9%	10.0%	9.4%	8.9%	8.5%
P	2.1%	2.0%	2.0%	2.2%	2.1%
NP	0.4%	0.3%	0.4%	0.2%	0.2%
W	17.1%	14.9%	12.6%	13.3%	13.7%

Success and Retention

CareerTech Courses

CareerTech courses are presented separately because they overlap with the three course types defined by academic level, namely, basic skills, degree applicable, and transferable. Outcomes in CareerTech courses show one major change over the five years. In Fall 2009 the retention rate increased by 2.1 percentage points to 87.4% and the success rate increased even more, rising 3.9 percentage points to 74.4%. Compared to the groupings by academic level, CareerTech courses have similar retention rates, but higher success rates. The Fall 2011 success rates were 74.8% for CareerTech courses, but only 72.0% for transferable courses.



Success and Retention

CareerTech Courses

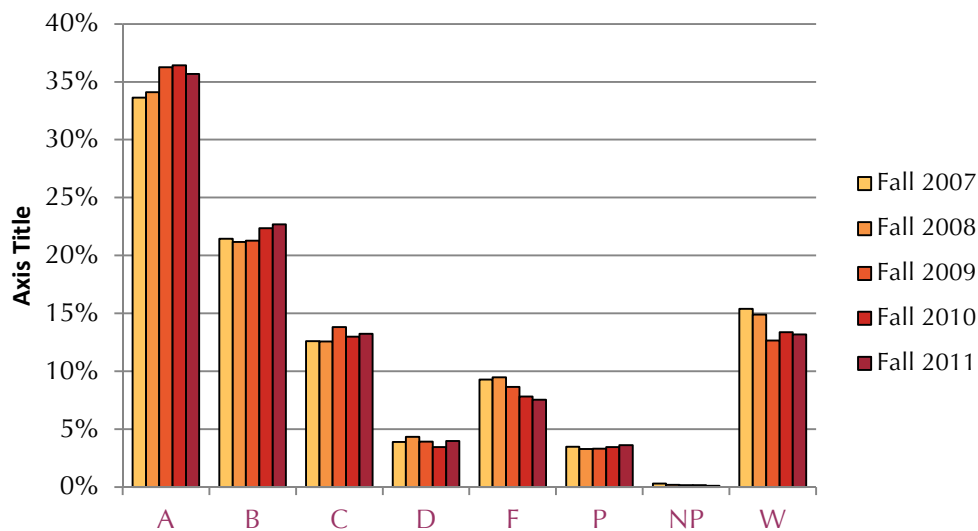
	Fall 2007	Fall 2008	Fall 2009	Fall 2010	Fall 2011
Percent					
Success	70.5%	70.5%	74.4%	74.7%	74.8%
Retention	84.7%	85.3%	87.4%	86.4%	86.9%

Grades

CareerTech Courses

As with most groupings of grades at PCC, W grades in CareerTech courses decreased in Fall 2009.

(Note: The retention rate percentage for CareerTech courses seems slightly inconsistent with the percentage of W grades presented here. This is because of a combination of rounding error and the fact that incomplete grades are included in the retention calculation, but are not reported here.)



Grades **CareerTech Courses**

		Fall 2007	Fall 2008	Fall 2009	Fall 2010	Fall 2011
<i>Count</i>						
A		4915	5280	5704	5941	5481
B		3135	3278	3347	3644	3487
C		1841	1946	2174	2117	2035
D		569	671	615	562	610
F		1358	1468	1361	1274	1160
P		508	506	520	562	555
NP		42	27	25	24	14
W		2251	2303	1989	2182	2023
	<i>Total</i>	<i>14619</i>	<i>15479</i>	<i>15735</i>	<i>16306</i>	<i>15365</i>
<i>Percent</i>						
A		33.6%	34.1%	36.3%	36.4%	35.7%
B		21.4%	21.2%	21.3%	22.3%	22.7%
C		12.6%	12.6%	13.8%	13.0%	13.2%
D		3.9%	4.3%	3.9%	3.4%	4.0%
F		9.3%	9.5%	8.6%	7.8%	7.5%
P		3.5%	3.3%	3.3%	3.4%	3.6%
NP		0.3%	0.2%	0.2%	0.1%	0.1%
W		15.4%	14.9%	12.6%	13.4%	13.2%