



Pasadena City College

# **LATINA/O/X**

## **Student Resource Guide**



# Table of Contents

¡Saludos! .....	<u>1</u>
About Pasadena City College .....	<u>2</u>
Options in Higher Education .....	<u>7</u>
Career & Academic Counseling .....	<u>9</u>
Think Transfer! .....	<u>11</u>
Degrees & Certificates.....	<u>12</u>
Academics.....	<u>17</u>
Latina/o/x Graduation.....	<u>24</u>
Empowerment Programs & Support Services .....	<u>26</u>
Tutoring & Success Centers.....	<u>41</u>
Student Advisory Equipo.....	<u>46</u>
President's Latino Advisory Committee.....	<u>47</u>
Association of Latino Employees .....	<u>48</u>
Safe Zones Coalition .....	<u>50</u>
Admissions & Financial Aid .....	<u>52</u>
Student Life .....	<u>58</u>
Athletics .....	<u>61</u>
Bookstore & Food Services.....	<u>63</u>
Health & Wellness.....	<u>64</u>
Social Services Support.....	<u>66</u>
Transportation Services.....	<u>67</u>
Rosemead & Foothill Campus.....	<u>68</u>
Dual Enrollment.....	<u>70</u>
Community Resources .....	<u>71</u>
Latina/o/x Websites & Resources .....	<u>73</u>
Latina/o/x Books at PCC.....	<u>75</u>
Contributors .....	<u>77</u>

# ¡Saludos!

Mi nombre es Dra. Cynthia Olivo y me da mucho orgullo ser la Vice Presidente de Servicios Estudiantiles aquí en PCC. As the first person in my family to go to college, I know first-hand how helpful a guide like this can be. I remember having so many questions but not really trusting that I could ask for help without feeling more out of place. When I became a Chicana activist, I learned about systems of oppression that were designed to make one feel like an “other” in society. I am 3rd generation born in this country but due to oppressive practices, my own hard-working, amazing, migrant farmworker grandparents were unable to go to college due to laws that prohibited their participation. My ten aunts and uncles attended school in an era where they were punished for speaking Spanish by their teachers and my own Mom was raised in a time when she also experienced blatant racism from her peers. Although they faced these challenges – my family endured in important areas in life – familia, love, faith and wisdom. It was in my generation, with the strength of our family members, that we pursued higher education. It was not easy being the first to go to college – but I gained strength from learning about our ancestors and drawing on the pride of our heritage – generations of activists, incredible people tracing back to our indigenous roots to creators, inventors, architects, mathematicians who developed thriving civilizations and had energy that endured throughout time and still do through us. I still draw upon what my Mom taught me as I was growing up – to use my voice to ensure that our Students who have been historically and are currently pushed to the margins – have a chance to succeed. So, that’s what we do at PCC. We try to match your needs with services that honor, validate and support you in realizing your dreams. This guide is full of resources – all designed for you. Remember, we have endured, we will persist and – ¡sí se puede!



## **Dra. Cynthia Olivo**

Assistant Superintendent/Vice President, Student Services



# About Pasadena City College

Pasadena City College (PCC) provides the San Gabriel Valley with a high quality, innovative and dynamic learning environment that inspires student success. Each semester we offer academic programs that encompass degrees, transfer programs, and certificates to 30,250+ students.

## We are on the homelands of the Tongva people:

The sites that make up PCC exist on the Indigenous homelands of the Tongva people. As inhabitants of this space, PCC and the various faculty, staff, and students who partner with us to support student success recognize that we are all simultaneously teachers, learners, and guests on these lands. This land acknowledgment is a small part of an ongoing process of working to be in good relationship with the land and the people of the land. Thank you to Dr. Michaela Mares-Tamayo, Director of Student Equity, for initiating and advocating that we acknowledge the land we stand on and for informing our institution about honoring sacred spaces.



## We are a diverse community of learners:

We are new students and returning students. We are local, international, and online. We span many cultures – LGBTQIA+, multicultural, veterans, and everyone else in between.

### Dr. Michaela Mares-Tamayo

**Department:** Student Equity, College 1

**Identity:** ¡Chicana!

#### Latino/a/x role model:

Melquiades Mares, Jr., '61 and Lorraine S. López, '73: two first-generation PCC alumni, transfer students, public school educators, and my parents.

#### What makes me Latino/a/x proud:

Knowing that I carry with me at all times a rich personal and community history.

#### Personal Message:

"Aspire not to have more, but to be more." – Archbishop Oscar Romero

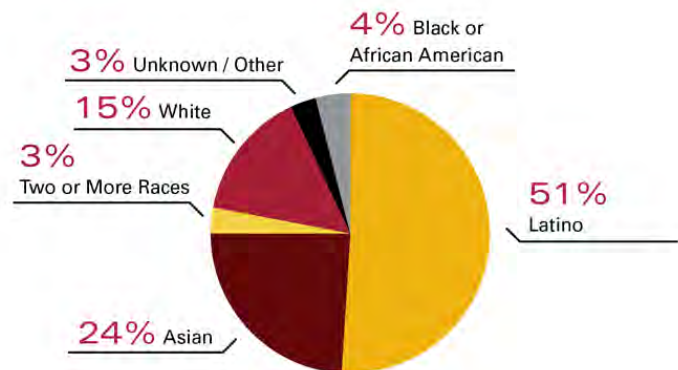


# About Pasadena City College

## ¡We are 51% Latinx students!

Pasadena City College is proud to be a Hispanic Serving Institution, a designation given to colleges with 25% or more of the student population being Latina/o/x students. We have held this federal designation since 1990. At PCC, more than half of our students identify as Hispanic, Chicana/

Chicano/Chicanx, Xicana/Xicano/Xicanx, or Latina/Latino/Latinx. In 2016, we celebrated Día de la Raza and the day we surpassed the 50% enrollment mark at PCC.



Our faculty, staff, and administrators have worked together through various organizations, centers, and initiatives on campus to highlight the importance of Latina/o/x stories to our College. In 2015, Pasadena City College held a semester long celebration to honor one of our most notable Latino alumni--Mr. Jaime Escalante whose work as a teacher at Garfield High School was featured in the movie, "Stand and Deliver". This served as a reminder that we embody the spirit of *ganas* and resiliency to overcome every obstacle in our way. In 2017, our PCC Distinguished Commencement Speaker was Julissa Arce, who shared her story as an Undocumented Student from Mexico and how she worked as an executive on Wall Street while keeping her status in the shadows. In Fall 2017, PCC held a private reception for our students with another notable alumna, NASA scientist Dr. Adriana Ocampo, at the Great Minds in STEM Conference at the Pasadena Convention Center. In 2019, our PCC Distinguished Commencement Speaker was Mexican artist Simón Silva and our Student Speaker was student Jessi Fernandez, who shared his story of resilience as a formerly incarcerated student now studying at UC Berkeley. Since 2015, PCC has hired more Latina/o/x Faculty, Staff, and Administrators, and is continuing efforts to diversify.

The term "**Latinx**" represents the identities of non-binary, gender non-conforming and gender-expansive people. For this resource guide, you may see "Latina/o/x" and "Latinx" used interchangeably. We do so with the recognition that there is much work we will continue to do in order to ensure that there is a sense of belonging and inclusion for all the lived experiences that make up our Latina/o/x community. In a similar way, we also understand the ongoing need to amplify the lives of indigenous, Brazilian and other non-Spanish speaking people who are part of our culturally diverse community.

# About Pasadena City College

## ¡We Embrace Our Identity as an HSI!

- PCC has been federally designated as a Hispanic-Serving Institution since 1990.
- We recognize the rich experiences, strengths, and needs that come with truly being an HSI.
- PCC is a paid member of the national organization for HSIs, the Hispanic Association of Colleges and Universities (HACU). We have actively participated in HACU since 2011 by sending a delegation primarily composed of students to the annual national conference.
- We are a partner to the Adelante Youth Alliance which brings thousands of Latina/o/x middle and high school students to our campus annually.
- In 2019, the City of Pasadena invited PCC to collaborate with community historian Roberta H. Martínez and create an exhibit to recognize and honor Latinx History in Pasadena.
- Our collegewide One Book One College feature this year is "Corazón" by local poet and award-winning author Yessika Salgado. We have also featured *Spare Parts*, *Little Nation*, and the *Madonnas of Echo Park* since the program was created in 2011.
- We are ranked 7th in the nation for awarding associate degrees to Latina/o/x Students.
- We are ranked #1 in California for awarding associate degrees to Latina/o/x Students.
- We know and have proof that at PCC Se Puede!



PCC students, staff, administrators, and President Endrijonas  
at the HACU Conference | 2019



# About Pasadena City College

## ¡We are the future!

We are science and math, liberal arts, music and art, athletics, nursing and vocational arts. We are recognized educators, experienced staff, and caring counselors. We offer an opportunity for students to transfer to top schools or to find new careers. We are achievers, impactors, and innovators. We break barriers. We are proud, bold and strong. We are everything our ancestors dreamt of and more!

This student resource guide is one of the many ways we are committed to ensuring that our institution is responsive to the needs of our Latinx community. Our intention for creating this resource guide is to assist Latinx students in identifying resources and support services focused on helping them reach their academic goals while at PCC.

Our students are the reason we have secured Title V and Title III grants so successfully in the past, and are the very center of our newest Title V grant, Abriendo Caminos, which represents a renewed opportunity to design with Latina/o/x strengths and experiences in mind. Join us in celebrating Latinas/os/xs at PCC, learning from, about, and with Latinas/os/xs at PCC, and supporting our community. We invite all who are reading this guide to affirm Latinas/os/xs at PCC and to learn from, about, and with us throughout the year, and to join us in embracing the work ahead. Thank you.

**Dr. Veronica Jaramillo**

**Department:** Chemistry

**Identity:** Latina (Ecuadorian)

**Latino/a/x role model:**

Chemistry Nobel prize winner,  
Mario Molina

**What makes me Latino/a/x proud:**

I am proud to be Latina because of the culture and family value. I grew up with a big family and our parties always involved dancing and amazing Ecuadorian dishes. I love that my family have always been supportive. My parents gave me confidence and a strong work ethic.

**Personal Message:**

"Never regret a day in your life. Good days give you happiness & bad days give you experience." - fearlessmotivation.com

I really believe that in my life, I have had hard moments and at those moments they were difficult to go through, but these experiences have made me who I am. I have also had many joyful experiences that I celebrate, and those also made me. My greatest goal has been to be true to myself and my beliefs. I have always defined what my goals were and many times as a Latina, I was the "only" and felt isolated at those times my family and friends were so important. Surround yourself with believers and learn for both the bad and good - you will be stronger for it!

# About Pasadena City College

## Black Lives Matter

The writers and contributors of this resources guide stand in solidarity with those fighting against injustice, oppression, and systemic racism. We stand with our Black students and their families, Black colleagues, and Black community. We see you, we mourn with you, we are here for you, and we stand arms locked together in the pursuit for justice.

For George Floyd, Ahmaud Arbery, Breonna Taylor, Botham Jean, Eric Garner, Freddie Gray, Philando Castile, Tamir Rice, Sandra Bland, Alton Sterling... and the countless others that have been murdered because of the color of their skin: we will be saying their names; organizing for change; and working to end institutional racism.

**We dedicate ourselves to modeling solidarity not just in words, but in action - in our communities and in our homes.** We recognize that Anti-Black racism is a reality in many Latinx communities. Ignoring the African within our culture is a form of Anti-Blackness that we will not tolerate.

## Basic Information on Afro-Latina/o/x Culture

The term Afro-Latina/o/x was adopted as a response to the invisibility of Latin American and Caribbean Blacks while discussing issues of ethnicity. Below are some useful resources to learn more about the Afro-Latina/o/x culture:

- [Defining "Afro-Latin@"](#)
- [Afro-Latino: A deeply rooted identity among U.S. Hispanics \(Pew Research Center\)](#)
- [International Society of Black Latinos](#)

## Critical Texts and Archives on Afro-Latindades

Miriam Jiménez Román and Juan Flores, eds. **The Afro-Latin@ Reader: History and Culture in the United States.** Duke UP, 2010 [archive.org/details/afrolatinreaderh00unse](https://archive.org/details/afrolatinreaderh00unse)

Alejandro de la Fuente and George Reid Andrews, eds. **Introduction to Afro-Latin American Studies: An Introduction.** Cambridge UP, 2018 [https://www.cambridge.org/core/books/afrolatin-americanstudies/AB7B6E0280841F36CD93912A091645A4FirstBlacks in the Americas](https://www.cambridge.org/core/books/afrolatin-americanstudies/AB7B6E0280841F36CD93912A091645A4FirstBlacks%20in%20the%20Americas). Dominican Studies Institute, CUNY. [firstblacks.org](https://firstblacks.org)

Tanya Katerí Hernández. **"Afro-Mexicans and the Chicano Movement: The Unknown Story."** California Law Review 92:5 (Oct., 2004): 1537-51. [www.jstor.org/stable/pdf/3481424.pdf](https://www.jstor.org/stable/pdf/3481424.pdf)



# Options in Higher Education

Knowing your career goal is helpful in determining which higher education option is best for you. For example, a student pursuing a career as a mechanical engineer will need to earn a bachelor's degree. On the other hand, a student pursuing a career as a registered nurse can begin a career with an associate's degree. If you are undecided on a career, the Robert G. Freeman Center for Career and Completion can help you learn more about yourself and the careers that would best fit with your interests, values, skills and goals.



**Dr. Isela Ocegueda**

**Department:**  
Dean of  
Academic Affairs

**Identity:** Chicana

**Latino/a/x role model:** My friend, Angie Haro

**What makes me Latino/a/x proud:**  
Our sense of familia even if we are not related by blood. I feel like we genuinely care about each other and want to see each other succeed and be happy.

**Personal Message:**  
Don't underestimate yourself, your dreams, your power. Connect with others to learn, to laugh, and to heal. Please don't hesitate to reach out and connect with me or any of us in this Latinx resource guide. ¡Estamos aquí para apoyarte!

**Doctoral or Professional Degree**  
Ph.D. / Ed.D. / M.D. / J.D. / Pharm D.

**Master's Degree**  
M.A. / M.S.

**Bachelor's Degree**  
B.A. / B.S.

**Associate's Degree**  
A.A. / A.S.

**Career & Technical Education Certification**

**High School Diploma or GED**

# Options in Higher Education

## Below are educational options available at PCC:

Earning an **AA-T or AS-T degree** at PCC guarantees you admission to many universities with junior standing and prepares you to complete a bachelor degree in a similar major at a CSU or a participating UC, HBCU or private university.

The **Associate in Arts degree** (AA degree) is a general studies degree. It can stand alone, giving you the skills to enter the workforce. Or, it can be the first steps towards earning a bachelor's degree at a university.

The **Associate in Science degree** (AS degree) prepares you with the unique skills needed to enter a specialized career field. You may also choose to continue your studies and earn a Bachelor degree in a science-related field or other area.

Our **Certificates of Achievement** give you the knowledge and training you need to enter a specialized career or enhance your skills for advancement in your job. Coursework completed while earning a Certificate may also be applied to an Associate of Science (AS) Degree to further increase your employability.

Earning an **Occupational Skills Certificate** develops your job skills in a special area of occupational education in a short period of time. Successful completion may certify that you are prepared with job entry skills leading to a full Certificate of Achievement program, or skills to upgrade or advance in an existing career.

**IMPORTANT:** An Associate Degree is generally not required or considered by the university as an admissions requirement. Many students choose to obtain an AA or AS degree prior to transferring for personal or professional reasons. The program of study for the AA degree can overlap with the lower division preparation for transfer. If your objective is to transfer, however, be sure to seek the advice of your counselor for the appropriate program of study for the Associate Degree.

## Questions to consider when talking to a Counselor or Faculty member:

- Do I need a degree if I plan to transfer to a university?
- What are the advantages of obtaining a degree at PCC?
- What is the difference between an AD-T degree and an AA or AS degree?
- What majors and certificates are available at PCC?
- What types of courses are required for these majors and certificates?
- How does my PCC major affect my major choice at a university?
- What are the skills I should be developing to be successful in the workplace?
- What programs or services are available to support my educational goals?

# Career & Academic Counseling



ROBERT G.  
**FREEMAN**  
CENTER  
FOR CAREER & COMPLETION

## Robert G. Freeman Center for Career and Completion

The Robert G. Freeman Center for Career and Completion was established through a generous donation from Molly Munger and Steve English, local philanthropists and supporters of PCC. The center is named for Munger's stepfather, an alumnus of the college and a contemporary of Walter Shatford, from whom PCC's Shatford Library derives its name. Dr. Freeman was a Pasadena Unified School District board member and a vocal advocate for the desegregation of Pasadena's public schools. Dr. Freeman passed away in 1975, but his legacy lives on in the lives that have been impacted by PCC and the Freeman Center.



### Services provided at the Center include:

- Exploring and choosing majors
- Exploring career options
- Providing interactive and online assessments
- Job and internship search



Room IT-200  
Phone: (626) 585-3377  
[pasadena.edu/academics/career-center](https://pasadena.edu/academics/career-center)



# Career & Academic Counseling

## Academic Counseling

Consider us your Academic Counseling Familia! We strive to empower you to be successful in your academic, career and personal goals. Our hope is that you feel supported to continue to be triumphant, just as your ancestors were.

Room L-104  
Phone: (626) 585-7251  
[pasadena.edu/academics/support/counseling](https://pasadena.edu/academics/support/counseling)

It's your goals, your hard work, your academic journey, but, we are here to help you get started and support you along the way. Counselors will help you create an education plan based on your major to help you stay on top of your academic goals, assist with transferring to a university, provide referrals to programs based on your interest and answer any type of question you may have.

There are many ways you can connect with an Academic Counselor to get the help and support you need; these include: phone, video, email or in person. We also have Spanish-speaking Counselors on staff. If you have a language preference, feel free to let us know!

To make an appointment, click on the following links:

If you have completed 0-20 units at PCC visit [New Student Counseling](#)

If you have completed 20+ units at PCC visit [Current Student Counseling](#)



*Atención:* If you are currently part of an empowerment or support service on campus that offers counseling, it is highly recommended that you meet and work with your specific program counselor to get the help you need. You may have received an email with a specific appointment link or steps outlining how to schedule an appointment through PCC Connect.

We believe in you! ¡Tú puedes!

# Think Transfer!

Whether it's to a CSU, UC, out-of-state or independent school, the PCC Transfer Center offers support, counseling, and transfer events to help you get there! Stop by the Transfer Center and find out what universities we are visiting, what workshops we are offering, speak to transfer advisors and learn about the different events that are planned in the near future! Did you know that every semester we host University Day and Night? In this event, hundreds of university representatives visit PCC to answer questions and help guide your transfer process! We welcome you and encourage you to begin your transfer journey by visiting the PCC Transfer Center.

## Think Transfer and Join CLAVE!

CLAVE stands for Chicano/a/x/ Latino/a/x Advancing in the Values of Education!

In Spanish, Clave means key or password. Similarly, our program focuses on providing you with the key values and benefits of transferring from PCC to a university.

### Benefits of CLAVE:

- Personalized academic/transfer counseling
- Assistance with transfer applications
- Appointments with university representatives
- Campus tours
- Student mentoring
- Campus resource information



### Ready to get started?

Call or visit the Transfer Center to schedule an appointment with our counselor!

**Stop by the PCC Transfer Center or contact us!**

Room L-110  
Phone: (626) 585-7287  
[pasadena.edu/academics/transfer-center](http://pasadena.edu/academics/transfer-center)

# Degrees & Certificates

Whether you're planning to transfer to a university or looking to enter the workforce, we have a transfer major or degree to help you get there.

## STEM

- Astronomy
- Biological Technology
- Biological Technology - Computational Biology
- Biological Technology - Laboratory Assistant
- Biological Technology - Laboratory Skills
- Biological Technology - Stem Cell Culture
- Biology
- Chemistry
- Computer Information Systems - CCNP Routing & Switching Preparation
- Computer Information Systems - CISCO Advanced Network Engineer
- Computer Information Systems - CISCO Enterprise Network Associate
- Computer Information Systems - Computer Retail Sales & Support
- Computer Information Systems - Cybersecurity
- Computer Information Systems - Full Stack Web Development
- Computer Information Systems - Help Desk / User Support
- Computer Information Systems - Software Development
- Computer Information Systems - System and Network Administration
- Computer Science
- Design Technology - CAD Designer - Architecture/Engineering/Construction
- Design Technology - CAD Modeling & Animation - Architecture/Engineering/Construction
- Design Technology - CAD Technician - Architecture/Engineering/Construction
- Design Technology - CAD Technician - Mechanical Design and Manufacturing
- Design Technology Mechanical and Manufacturing
- Electrical Technology - Applied Circuits & Systems
- Electronics Technology Basic Digital Technician
- Engineering & Technology - Manufacturing Engineering Technician
- Engineering & Technology - Mechanical Engineering Technician
- Engineering and Technology
- Engineering: Civil Engineering Emphasis
- Engineering: Electrical Engineering Emphasis
- Engineering: Mechanical, Aerospace, and Manufacturing Engineering Emphasis
- Environmental Studies
- Geography
- Geology
- Geotech (GIS)
- Machine Shop Technology
- Machine Shop Technology - Industrial Fabricator
- Mathematics
- Natural Sciences
- Physical Sciences
- Physics
- Welding - Basic Welding
- Welding - Construction Welding
- Welding - Gas Tungsten and Gas Metal Welding



# Degrees & Certificates

## Social and Behavioral Science

- Anthropology (AA-T)
- Archaeological Field Work
- Child Development
- Child and Adolescent Development
- Child Development - Administration
- Child Development - Early Childhood Education (AS-T)
- Child Development - Early Intervention
- Child Development - Infant/Toddler
- Child Development - Instructional Assistant
- Child Development - Language & Literacy
- Child Development - Multicultural Awareness
- Child Development - Music & Movement Education for Young Children
- Child Development - School Age Instructional Assistant
- Child Development - Science and Math Integration
- Child Development - Special Education
- Child Development - Special Education Assistant
- Economics
- Education
- Education - Elementary Teacher Education
- Gender, Ethnicity, and Multicultural Studies
- Global Studies for Transfer (AA-T)
- History (AA-T)
- Humanities
- Library - Archives and Digital Collections Assistant
- Library - Digitization Skills for Libraries and Cultural Heritage Institutions
- Philosophy
- Political Science (AA-T)
- Psychology (AA-T)
- Social and Behavioral Sciences
- Social Justice Studies (AA-T)
- Sociology (AA-T)

## Health & Wellness

- Anesthesia Technology
- Culinary Arts - Kitchen Assistant
- Dental Assisting
- Dental Hygiene
- Emergency Medical Technology - Basic Level  
Emergency Medical Technician
- Gerontology
- Gerontology - Elder Care
- Health Education
- Kinesiology
- Kinesiology & Wellness
- Medical Assisting - Administrative & Clinical
- Medical Assisting - Medical Insurance Biller
- Medical Assisting - Medical Office Administration
- Nursing - Certified Nursing Assistant
- Nursing - Licensed Vocational Nurse to  
Registered Nurse
- Nursing - Registered Nursing
- Nursing - Vocational Nursing
- Nutrition and Dietetics
- Public Health Science (AS-T)
- Radiologic Technology
- Restorative Dental Technology
- Yoga Teacher Trainingg



# Degrees & Certificates

## Liberal Arts

- American Sign Language
- Chinese
- English
- English - Literature
- Foreign Language - Advanced
- Foreign Language - Basic
- Foreign Language - Intermediate
- French
- German
- Italian
- Japanese
- Library Technology
- Linguistics
- Russian
- Spanish



**Lilliana  
Castro**

**Department:**  
Visual  
Media Arts -  
Architecture

**Identity:** Central American, Centro  
Americanx, Salvadoreñx, Latinx

**Latino/a/x role model:**  
Prudencia Ayala, indigenous writer  
and social activist advocating for  
Womxn's rights in El Salvador.

**What makes me Latino/a/x proud:**  
The rich history of my Mayan  
ancestors, I am Nahuatl Pipil from  
El Salvador and have fought  
oppressive forms of government  
since day one.

**Personal Message:**  
If you can design one thing, you can  
design everything.

## Arts, Communication & Design

- Architecture
- Art History
- Cinema - Cinema Production/Filmmaking
- Cinematography
- Communication Arts
- Communication Studies
- Dance
- Design Studies - Industrial Design
- Design Studies - Interior Design
- Design Studies - Jewelry/Metalworking
- Design Studies - Product Design
- Design Studies - Product Design - Graphics
- Design Studies - Product Design - Technology
- Design Media Art - Animation and Motion Arts
- Design Media Art - Game Design & Development
- Design Media Art - Graphic Design
- Design Media Art - Interactive Art & Design
- Design Media Art - Web Design & Development
- Design Media Art - Design/Media Arts Foundation
- Fashion - Design
- Fashion - Historical Costume Making
- Fashion Assistant
- Fashion Marketing
- Film, Television, and Electronic Media
- Graphic Communications Technology - Apparel Graphics and Printing
- Graphic Communications Technology - Computer Imaging and Composition
- Graphic Communications Technology - Electronic Prepress
- Graphic Communications Technology - Screen Printing

# Degrees & Certificates

## Arts, Communication & Design (Cont.)

- Graphic Communications Technology - Screen Printing for Small Business
- Graphic Communications Technology - Textile Printing
- Journalism
- Journalism - Photojournalism
- Journalism - Printed Media
- Music
- Music - Commercial Music
- Music Entrepreneurship
- Photography
- Photography - Digital Image Editing
- Photography - Foundation in Photography
- Photography - Portrait Photography
- Speech Communication
- Speech Communication
- Speech-Language Pathology Assistant
- Studio Art
- Television and Radio - Broadcast Journalism
- Television and Radio - Media Programming and Management
- Television and Radio - Radio Production
- Television and Radio - Television Operations
- Television and Radio - Television Post Production
- Television and Radio - Television Production
- Television and Radio - Video Operations
- Television and Radio - Video Post Production
- Television and Radio - Video Production
- Television and Radio - Writing for Film, Television and Radio
- Theater Arts
- Theater Technology

### Tanith Quintanilla

**Department:** Counseling, College 1

**Identity:** Latina

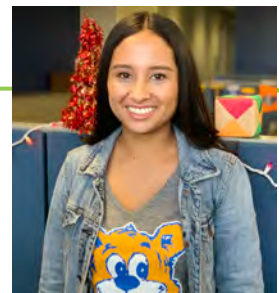
**Latino/a/x role model:** Eva Longoria

**What makes me Latino/a/x proud:**

What makes me proud to be a Latina is the resourcefulness and resiliency that I see within the Latinx community to push forward.

**Personal Message:**

In moments when I think I can't and the feeling of imposter syndrome is at an all time high, I think about my parents and family members who migrated to the US from El Salvador to escape a war and in hopes of a better life. Being first generation, is not always easy but remembering my parents resiliency reminds me of my own. It motivates me to push through the discomfort and unknown to create a life I love. Always remember to push forward to reach your goals and dreams.





# Degrees & Certificates

## Business and Industry

- Accounting - Certified Bookkeeper
- Administration of Justice
- Automotive Technology - All Automotive Systems
- Automotive Technology - Automotive Electrical Systems Technician
- Automotive Technology - Engine Performance Technician
- Automotive Technology - Heating & Air Conditioning Technician
- Automotive Technology - Powertrain Technician
- Automotive Technology - Undercar Technician
- Automotive Technology - Underhood Technician
- Building Construction - Construction Inspection
- Business
- Business Administration
- Business Administration - Customer Service
- Business Administration - Entrepreneurship
- Business Administration - Entrepreneurship and Small Business Management
- Business Administration - Financial Investments
- Business Administration - International Business/Trade
- Business Administration - Management
- Business Administration - Marketing Management
- Business Administration - Retail Management
- Business Information Technology - Administrative Assistant
- Business Information Technology - Business Information Worker
- Business Information Technology - Business Information Worker II
- Business Information Technology - Business Software Specialist
- Business Information Technology - Office Assistant
- Cosmetology
- Cosmetology - Instructional Techniques in Cosmetology
- Culinary Arts
- Culinary Arts - Baking and Pastry
- Culinary Arts - Catering
- Electrical Technology
- Electrical Technology - Photovoltaic Design and Installation
- Fire Technology
- Fire Technology - Fire Academy Preparation
- Hospitality Management
- Paralegal Studies



**Dr. Ernesto Bustillos**

**Department:**  
Social Sciences -  
Sociology

**Identity:**  
Chicano, Mexican American

**Latino/a/x role model:**  
Sal Castro who believed in the power of education to empower our people

**What makes me Latino/a/x proud:**  
Our culture and traditions

**Personal Message:**  
Si se puede - you can succeed in spite of the odds.

# Academics

## Associate in Arts in Spanish

This associate degree prepares both non-native students and heritage learners to communicate effectively in Spanish in a wide range of personal and professional settings. Students will broaden their cultural awareness and develop sensitivity to the diverse Hispanic cultures within the global community. This degree prepares students for career advancement and transfer to a four-year college or university.

## Spanish (AA-T)

The Associate in Arts in Spanish for Transfer Degree (AA-T in Spanish) develops competence in the ability to understand, speak, read and write Spanish, and to provide an understanding and appreciation of the Spanish language and the cultures of the Spanish-speaking world. The AA-T in Spanish prepares students to continue their education at a California State University (CSU) campus leading to a baccalaureate degree in Spanish.

## Latina/o/x Courses At PCC

Learn more about Latina/o/x history, heritage and culture through these offered at PCC:

### Anthropology 031 - Mexican and Chicano Culture (3 units)

Analysis of Mexican-American culture and society; religion, political interests, economy, customs, institutions; cultural adaptation of the Mexican-American to the dominant culture. Total of 54 hours lecture.

**Transfer Credit:** CSU; UC

---

### Art 007 - Pre-Columbian Art (3 units)

A survey of the major monuments of sculpture, architecture, painting and the minor arts of Mesoamerica and the Andean region of western South America from ca. 2000 B.C. until the Conquest. Total of 54 hours lecture.

**Transfer Credit:** CSU; UC

---

### Art 008 - History of Mexican and Chicano Art (3 units)

A survey of Mexican art from its beginning to the present. Includes pre-Columbian, colonial and modern art in Mexico as well as contemporary Mexican-American expression. Total of 54 hours lecture.

**Transfer Credit:** CSU; UC

# Academics

## English 047 - Mexican and Chicano Literature (3 units)

**Prerequisite:** Eligibility for ENGL 001A or 001AH or 001AS.

Literary, social and historical aspects of essay, novel, drama, short story and poetry in English translation written by Mexican and Chicano writers with a survey of other relevant Latin American literary works. Total of 54 hours lecture.

**Transfer Credit:** CSU; UC

---

## History 008 - History of California (3 units)

California's history from its beginnings to the modern era. Explores the multicultural and multifaceted "Golden State" and its political, economic, and sociocultural development on the west coast of the United States. Total of 54 hours lecture.

**Transfer Credit:** CSU; UC

---

## History 009A - Latin America: Pre-Columbian to 1825 (3 units)

Latin American history from pre-Columbian times to the independence of Latin American lands; emphasis on institutions of the past which have shaped conditions of the present; relations between Latin America and the United States. Total of 54 hours lecture.

**Transfer Credit:** CSU; UC

---

## History 009B - Latin America: 1825 to the Present (3 units)

Social, economic and political history of Latin America from independence to the present. Legacy of colonialism; development of cultural, political, and economic institutions; relations between Latin America and the United States foreign policies. Total of 54 hours lecture.

**Transfer Credit:** CSU; UC

---

## History 030 (History of Mexico)

Mexico from pre-Columbian times to the early national period; political, economic, social and cultural developments; inter-American relations. Total of 54 hours lecture.

**Transfer Credit:** CSU; UC



## **History 031 - History of Mexican Americans in the United States (3 units)**

Survey of U.S. history from the Mexican American perspective covering historical periods from pre-European settlements to 21st century. Emphasis is placed on the experiences, problems, and contributions of Mexican Americans and the formation of Mexican American societies within the context of U.S. history. Total of 54 hours lecture.

**Transfer Credit:** CSU; UC

---

## **Philosophy 031 - Contemporary Chicano Philosophy (3 units)**

Survey of Mexican philosophy; emphasis on contemporary developments; implications of Mexican thought for the Mexican-American. Total of 54 hours lecture.

**Transfer Credit:** CSU; UC

---

## **Psychology 031 - Studies in Chicano Behavior (3 units)**

An examination of Mexican-American behavior patterns. Emphasis on attitudes, feelings and socio-psychological conflicts of the Mexican-American in relation to social situations. Total of 54 hours lecture.

**Transfer Credit:** CSU; UC

---

## **Sociology 031 (Chicano Sociology)**

Cultural background of Mexican-American; major differences between Anglo and Mexican-American values and attitudes; past and present intercultural problems; economic, educational, political, language, family; Mexican-American contributions to the United States. Total of 54 hours lecture.

**Transfer Credit:** CSU; UC

**Grade Mode:** L, A, P

---

## **Spanish 001 - Elementary Spanish (5 units)**

Beginning language acquisition with practice in listening, speaking, reading and writing. Introduction to customs and culture of Spain and Latin America. Corresponds to first year of high school Spanish. Total of 90 hours lecture.

**Transfer Credit:** CSU; UC

## Spanish 002 - Elementary Spanish (5 units)

**Prerequisite:** SPAN 001 or 150B, or the first year of high school Spanish, or placement based on the foreign language assessment process.

Continuation of elementary grammar essentials; speaking, reading, listening and writing with stress on authentic language; further study of Spanish and Latin-American civilization. **No credit** if taken after SPAN 002A. Total of 90 hours lecture.

**Transfer Credit:** CSU; UC

---

## Spanish 002A - Spanish for Spanish Speakers (5 units)

**Prerequisite:** One year of high school Spanish, or placement based on the foreign language assessment process.

Intensive training in oral and written Spanish for those who speak it, but have had little or no formal training in the language. Improvement of oral expression; Spanish grammar; readings in contemporary Spanish prose; composition; study of Spanish and Latin American cultures. **No credit** if taken after SPAN 001 or 002. Total of 90 hours lecture.

**Transfer Credit:** CSU; UC credit limitations.

---

## Spanish 003 - Intermediate Spanish

**Prerequisite:** SPAN 002 or 002A or two years of high school Spanish or placement based on the foreign language assessment process.

Reading, writing, speaking and listening with development of communication and analytical skills based on 20th and 21st century Spanish and Latin-American readings; review of Spanish grammar; increased vocabulary. Customs and culture. Total of 90 hours lecture.

**Transfer Credit:** CSU; UC

---

## Spanish 004 - Intermediate Spanish

**Prerequisite:** SPAN 003 or three years of high school Spanish or placement based on the foreign language assessment process.

Further reading, writing, speaking and listening with development of communication and analytical skills based on 20th and 21st century Spanish and Latin-American readings; review of Spanish grammar; increased vocabulary. Customs and culture. Total of 90 hours lecture.

**Transfer Credit:** CSU; UC

## Spanish 005 - Introduction to Spanish Literature (3 units)

**Prerequisite:** SPAN 004 or placement based on the foreign language assessment process.

Reading and discussion of selections from Spanish literature. Total of 54 hours lecture.

**Transfer Credit:** CSU; UC

---

## Spanish 006A - Introduction to Spanish-American Literature (3 units)

**Prerequisite:** SPAN 004 or placement based on the foreign language assessment process.

Reading and discussion of selections from Spanish-American literature from the Conquest to the end of 19th Century. Total of 54 hours lecture.

**Transfer Credit:** CSU; UC

---

## Spanish 006B - Introduction to Spanish-American Literature (3 units)

**Prerequisite:** SPAN 004 or placement based on the foreign language assessment.

Reading and discussion of XX Century selections from Spanish-American literature. Total of 54 hours lecture.

**Transfer Credit:** CSU; UC

---

## Spanish 008A-B - Introduction to Spanish Conversation (4 units)

**Prerequisite:** SPAN 002 or two years of high school Spanish or placement based on the foreign language assessment process.

Practice in oral self-expression and understanding spoken Spanish. **No credit** if taken after SPAN 003 or SPAN 009A-C. **For** non-native speakers of Spanish. **Each course** 2 units, and a total of 36 hours lecture.

**Transfer Credit:** CSU

---

## Spanish 009A-C - Spanish Conversation (6 units)

**Prerequisite:** SPAN 003 or three years of high school Spanish or placement based on the foreign language assessment process.

Intensive practice in oral expression and comprehension of spoken Spanish. **Each course** 2 units, and a total of 36 hours lecture.

**Transfer Credit:** CSU; UC



## Spanish 012 - Spanish Literature in Translation (3 units)

**Prerequisite:** Eligibility for ENGL 001A.

Reading and discussion of major works of Spanish or Latin American literature in translation from different historical periods. Selections will be made from different genres: novel, drama, poetry and the essay. Students will learn to identify the unique traits of each work and become acquainted with the historical, cultural and artistic influences on them. (Course conducted in English.) Total of 54 hours lecture.

**Transfer credit:** CSU; UC

---

## Spanish 025 - Spanish Composition

**Prerequisite:** SPAN 004 or placement based on the foreign language assessment process.

Practice in writing Spanish with appropriate vocabulary, syntactical structures and stylistic patterns. Emphasis on written expression that is grammatically correct, lexically sophisticated and rhetorically competent. Production of coherent expository prose. Total of 54 hours lecture.

---

## Spanish 031 - Language of the Barrio (3 units)

**Prerequisite:** SPAN 001 or Spanish conversational ability.

Study of the language that is used in the Mexican-American barrios. Emphasis given to how language reflects the uniqueness of the community. Total of 54 hours lecture.

**Transfer Credit:** CSU

---

## Spanish 042A - Civilization of Spain and Portugal (3 units)

Lectures and discussions on the geography, history and institutions of Spain and Portugal; life and customs, literature, music and art. (Course conducted in English.)

**No credit** if taken after SPAN 042 or 042B. Total of 54 hours lecture.

**Transfer Credit:** CSU; UC credit limitations.

---

## Spanish 042B - Civilization of Spain and Portugal (3 units)

**Prerequisite:** SPAN 003 or placement based on the foreign language assessment process.

Lectures and discussions on the geography, history and institutions of Spain and Portugal; life and customs, literature, music and art. (Course conducted in Spanish.)

**No credit** if taken after SPAN 042 or 042A. Total of 54 hours lecture.

**Transfer Credit:** CSU; UC credit limitations. See counselor.

# Academics

## Spanish 044 A - Civilization of Latin America (3 units)

Geography, history, life, customs, literature, music and art of Spanish and Portuguese speaking peoples of Latin America. (Course conducted in English.) **No credit** if taken after SPAN 044 or 044B. Total of 54 hours lecture.

**Transfer Credit:** CSU; UC credit limitations. See counselor.

---

## Spanish 044 B - Civilization of Latin America (3 units)

**Prerequisite:** SPAN 003 or placement based on the foreign language assessment process.

Geography, history, life, customs, literature, music and art of Spanish and Portuguese speaking peoples of Latin America. (Course conducted in Spanish.) **No credit** if taken after SPAN 044 or 044A. Total of 54 hours lecture.

**Transfer Credit:** CSU; UC credit limitations. See counselor.

---

## Spanish 050 - Spanish and Latin America Cinema (3 units)

**Prerequisite:** Eligibility for ENGL 001A or placement based on the foreign language assessment process.

Introductory study of Spanish and Latin-American films. The historical evolution of cinema as an art form, with emphasis on major themes, directors and movements, including recent developments in US Latino films. (Course conducted in English). Total of 54 hours lecture.

**Transfer Credit:** CSU; UC

**Grade Mode:** L, A, P

### Sandra Parra

**Department:** International Student Center

**Identity:** Proud Latina/Chicana

**Latino/a/x role model:** My Grandmother Julia

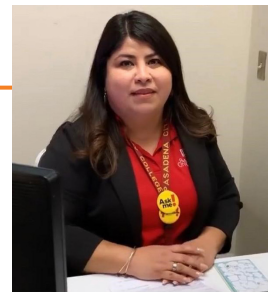
#### **What makes me Latino/a/x proud:**

Our rich culture, values, family traditions and that we are very united as a family.

#### **Personal Message:**

"If you have a dream don't let anybody take it away." - Selena

Todo Lo puedo en Cristo que me fortalece.



# Latina/o/x Graduation

## Latina/o/x Graduation ¡Celebrando tus logros!

### Mission/Purpose:

The Latina/o/x Graduation intentionally supports the retention and completion of the Latinx student population at PCC. Our celebration builds community and a sense of familia for PCC Latinx students and strives to empower students to be their agents for social change in their lives, their families and their communities. Our goal is to provide models of success for future generations.

### Objectives:

1. Engage and motivate Latinx students to complete a certificate, degree and/or transfer program.
2. Engage and motivate Latinx students to complete high school diploma or GED as a step towards continuing a postsecondary education.
3. Create and cultivate a space for staff, faculty, students and their families to celebrate PCC Latinx students' achievements in a culturally-affirming event.

### General Information:

Join us in honoring your accomplishments at PCC in a culturally-rich, bilingual Latinx celebration along with your family and peers. The Latinx Graduation Ceremony is for both Transfer and Graduating students from all sites of our College, non-credit and credit.

The graduation takes place every Spring at PCC. All friends and family are welcome to attend.

### Included in this ceremony:

- Certificate
- Sarape Stole
- Entertainment
- Dinner



Phone: (626) 585-7287  
Email: [clave@pasadena.edu](mailto:clave@pasadena.edu)



# Latina/o/x Graduation



## Eligibility:

- Be a PCC student
- Be transferring, graduating, or receiving a certificate (CTE)
- Be able to attend the Latinx Graduation ceremony

## FAQS:

### *Can I participate in both Latinx Graduation and PCC commencement? What is the difference?*

Yes, the Latinx Graduation is meant to be complementary to the main PCC Commencement. Some students will participate in both or just one. It's up to you!

### *How many tickets will each student receive?*

### *What do I wear? Where do we meet?*

Tickets, attire, and general information will be discussed during the mandatory orientation.

### *Do I wear a cap and gown? If so, how will I receive it?*

For the Latinx graduation, we do not require students to wear a cap or gown. We will discuss the dress code in detail during the orientations.

### *Is the graduation free?*

The Latinx Graduation is free. We provide students with the Sarape sash, certificate of achievement, and dinner.

## Armando Duran

**Department:**  
Counseling  
& Student  
Success  
Services, College 1

**Identity:** Latino

**Latino/a/x role model:** My Mom

**What makes me Latino/a/x proud:**  
I am proud of how our rich culture and traditions are grounded in familia.

### **Personal Message:**

"Success is a matter of one's own feelings about oneself." - Edward James Olmos



# Empowerment Programs & Support Services

## ASCEND Promise Scholars

ASCEND (Academic Success and College Empowerment Network Design) Promise Scholars is a holistic student support and empowerment program designed for Men of Color. We provide personalized academic and social support, financial assistance with expenses such as tuition, textbooks, transportation, and technology, a strong sense of community, and mentorship by Men of Color for Men of Color.

Room L-104

Email: Rohan Desai  
[rxdesai@pasadena.edu](mailto:rxdesai@pasadena.edu)

### As an ASCEND Promise Scholar you will receive:

- A dedicated ASCEND Counselor and Student Success Coach to guide and mentor you throughout your entire time at Pasadena City College
- Personalized financial assistance with tuition, textbooks, transportation, and technology based on your individual needs
- Personalized holistic support, including:
  - Social Work Services
  - Mental Health Services and Personal Counseling
  - Food and Housing Support and Referrals
- Priority registration to ensure that you are able to enroll in the classes you need in order to complete your educational goals in a timely manner
- Career development counseling and workshops to assist you in identifying the best possible career for you and the steps required to achieve your career goals
- A strong sense of community with other male students, faculty, and staff of Color
- Opportunities to engage in special events and activities tailored to the needs of Men of Color

### You are eligible if you:

- Identify as a Man of Color
- Demonstrate a significant financial need through either the FAFSA or California Dream Act Application - My FAFSA/California Dream Act Application indicates an Estimated Family Contribution of \$0
- Are a first time college student - Exceptions will be made on a case-by-case basis for students who have completed no more than 15 units of college coursework with a 2.00 minimum GPA
- Want to enroll at Pasadena City College full-time (12 units or more) beginning in Fall 2020

# Empowerment Programs & Support Services

## Blackademia We Are Black Excellence

Blackademia is an academic hub at PCC that empowers Black students with essential resources to achieve educational success. Through Blackademia, you will have access to a variety of services and resources that help you to complete your goal at Pasadena City College.

Room CC-224  
Phone: (626) 585-7255  
Email: [blackademia@pasadena.edu](mailto:blackademia@pasadena.edu)  
[pasadena.edu/academics/support/black-student-success/blackademia](http://pasadena.edu/academics/support/black-student-success/blackademia)

### As a Blackademia Student you will receive:

- Academic Coaching
- Tutoring
- Conferences
- Success Workshops
- Networking Opportunities
- Campus Resource Referrals
- Some Financial Assistance
- Success Packets
- Volunteerism
- Community Building
- Community Service Opportunities and Forums



**Juan Pablo Carreon (JP)**

**Department:** Counseling

**Identity:** Xicano

**Latino/a/x role model:** Madre - Carmen Lopez

#### What makes me Latino/a/x proud:

Proud to be Xicano & would not change it for anything! Love mi cultura! My experiences have shaped me to the person I am today. Proud to be from El Monte, CA!

#### Personal Message:

"Education is an important element in the struggle for human rights. It is the means to help our children and thereby increase self-respect. Education is our passport to the future, for tomorrow belongs to the people who prepare for it today." - Malcolm X

"We need more light about each other. Light creates understanding, understanding creates love, love creates patience, and patience creates unity." - Malcolm X





# Empowerment Programs & Support Services

## CalWORKs

PCC CalWORKs is a state-funded Welfare-to-Work program designed to help individuals on public assistance become self-sufficient. We partner with local counties to assist you in achieving your educational goals.



The California Work Opportunity & Responsibility to Kids (CalWORKs) program at Pasadena City College is here to support you and your family. As a low-income parent currently enrolled at PCC, the CalWORKs program will work with you to obtain educational and career opportunities. During this process, you will have access to our high-quality support services in order to help you reach your educational and career goals. We believe in you and want to see you accomplish your goals and be role models for your children!

### Provides Assistance in:

- Priority Registration
- Academic Counseling
- Orientation
- Work-study opportunities
- County (GAIN) paperwork assistance
- Book and supply requests
- Personal development workshops
- Employment and career preparation
- Educational goal progress monitoring
- Advocacy and resource referral
- Direct support (i.e. books, gas cards, supplies & child care)

### Eligibility:

1. Are you a parent to a child who is under the age of 18?
2. Are you currently receiving the adult portion of CalWORKs (TANF) cash aid from the LA County or another local county?

If you answered YES to both of these questions, you are eligible for PCC CalWORKs program!

Room L-107  
Phone: (626) 585-7060  
Email: [calworks@pasadena.edu](mailto:calworks@pasadena.edu)  
[pasadena.edu/academics/support/calworks](http://pasadena.edu/academics/support/calworks)

# Empowerment Programs & Support Services



## Community Overcoming Recidivism through Education (CORE)

CORE provides support services to formerly incarcerated and system impacted students enrolling at Pasadena City College. The primary goal of CORE is to develop a holistic approach empowering students to succeed in higher education and beyond. The program focuses on building community, on and off campus, that will serve as social, emotional and academic support for our students.

### Services Provided By CORE:

- Assistance with college enrollment and services
- Guidance in applying for financial aid and scholarships
- Academic tutoring
- Student-peer mentorship
- Transfer preparation
- Expungement workshops
- Access to community resources
- Assistance with job readiness

### Eligibility for CORE:

- Currently enrolled at PCC
- Enrolled in at least three units
- Identify as a student who has been formerly incarcerated and/or system impacted

Room D-108G  
Phone: (626) 585-7032  
Email: [core@pasadena.edu](mailto:core@pasadena.edu)  
[afrancoso@pasadena.edu](mailto:afrancoso@pasadena.edu)  
[pasadena.edu/core](http://pasadena.edu/core)



# Empowerment Programs & Support Services



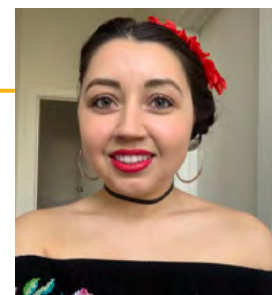
Room D-209  
Phone: (626) 585-7127  
Email: [dsps@pasadena.edu](mailto:dsps@pasadena.edu)  
[pasadena.edu/academics/support/dsps](http://pasadena.edu/academics/support/dsps)

## Disabled Student Programs & Services (DSP&S)

The Disabled Student Programs and Services (DSP&S) is designed to enable students with documented disabilities to get access to all of the College's programs and activities. A variety of programs and services are available for eligible students with disabilities, providing the opportunity to participate fully in all aspects of the college programs and activities through appropriate and reasonable accommodations.

### Services We Provide:

- Registration Help & Counseling
- Accommodations inside the classroom
- Alternate Media Services
- Assistive Technology
- Deaf/Hard of Hearing (DHH Services)
- Test Accommodations



### Meghann Mercado

**Department:** EOP&S/  
General Counseling,  
College 1

**Identity:** Chicana.

### Latino/a/x role model:

My parents. They have shown my siblings and I hard work, perseverance and unconditional love while keeping our traditions alive. As I have gotten older, I have a deeper appreciation for the way they raised us and realize why they made the certain decisions at certain times even if I did not understand. I just want to make them proud.

### What makes me Latino/a/x proud:

Everything! The fact that I have the choice of listening to happy or sad songs in two different languages is awesome!

### Personal Message:

"Never forget where you come from."  
- Grandma Salce

# Empowerment Programs & Support Services

## Extended Opportunity Program & Services (EOP&S)

EOP&S is dedicated to supporting and encouraging you during your time at PCC. EOP&S offers a wide variety of services and benefits, all at no cost to you. EOP&S is a state-funded program at Pasadena City College that provides educational and financial support services to students who have experienced economic and educational hardships.

Room L-107

Phone: (626) 585-7439

Email: [eops@pasadena.edu](mailto:eops@pasadena.edu)

for EOPS/CARE/NextUp students

[starsfostercare@pasadena.edu](mailto:starsfostercare@pasadena.edu)

for STARS students

[pasadena.edu/academics/support/](http://pasadena.edu/academics/support/)

[eops-foster-youth/eops](http://eops-foster-youth/eops)

### Services provided by EOP&S:

- Book Vouchers
- Financial Aid Help
- Counseling and Advisement/  
Group Counseling
- Tutoring
- Scholarship Assistance Program
- Transportation services
- Priority Registration

### Eligibility:

- Are a resident of California or qualify for the AB540 exemption waiver
- Qualify and receive the California College Promise Grant (formally known as the BOGW)
- Are educationally disadvantaged (in one or more areas listed below):
  - Not recommended to enroll in degree applicable English or Math classes
  - Does not have a high school diploma or GED
  - High School G.P.A. below 2.5
  - Previously enrolled in remedial English or Math classes
  - Be a current or former foster youth
  - Be a first-generation college student
  - Be a non-native English speaker
- Food and Housing Support and Referrals must not have completed more than 45 units of degree applicable coursework from all colleges/universities attended



# Empowerment Programs & Support Services

## Honors Program

The Honors Transfer Program will challenge you academically, support you through your academic journey, and strengthen your transfer application. If you're a highly motivated student at Pasadena City College and planning on transferring to a four-year institution, consider the Honors Transfer Program to put you on the path to success.

Room C-352D  
Phone: (626) 585-3238  
Email: [honors@pasadena.edu](mailto:honors@pasadena.edu)  
[pasadena.edu/academics/  
support/honors](http://pasadena.edu/academics/support/honors)

### Benefits of the program:

As an Honors student, you'll not only receive the personal support of a motivated and transfer-oriented community, but you'll also benefit from these exclusive opportunities:

- Honors classes open only to Honors students which means smaller class sizes and easier registration!
- Access to Honors counseling appointments.
- Priority consideration for transfer to these schools:
  - UCLA TAP (Transfer Alliance program)
  - UC Irvine
  - Occidental
  - Pomona College
  - University of La Verne
  - Pitzer College
  - Loyola Marymount
  - Mills College
  - Whittier College
  - Whitman College
- Special workshops to help you through the transfer process
- An Honors certification on your PCC transcript.
- A stronger transfer application to any university

### Eligibility:

Join honors as a new student to PCC or a current student. You are eligible for the PCC Honors Transfer Program if you:

- Are eligible for English 1A.
- Have an unweighted high school GPA of 3.2 or above (transcripts must be provided)
- OR have a college GPA of 3.2 or above with 12 units or more in UC-transferable courses (transcripts\* from other institutions must be provided).

# Empowerment Programs & Support Services



Phone: (626) 585-3085

Email: [mesa@pasadena.edu](mailto:mesa@pasadena.edu)

[pasadena.edu/academics/  
support/mesa](http://pasadena.edu/academics/support/mesa)

## Mathematics, Engineering, Science Achievement (MESA)

MESA at PCC serves over 300 students pursuing a major in Science, Technology, Engineering, and Math. We provide educationally and economically disadvantaged students with the skills and resources to be successful in school and career in science, technology, engineering and math.

### What is MESA?

The MESA California Community College Program (MESA CCCP) is an academic program that supports educationally disadvantaged community college students to excel in math, engineering and science so they can transfer to four-year institutions as majors in these fields. MESA CCCP Centers are located on community college campuses throughout the state. The program is a collaboration between MESA and the California Community College Chancellor's Office.

MESA CCCP is based on a rigorous academic program that uses various components to support students majoring in math, engineering and science. The program components help build an academically-based peer community to provide mutual student and motivation. This community of learners is what sets MESA CCCP apart from other programs. Of MESA CCCP students who transfer to four-year institutions, 100% choose to major in math-based fields. One year later, a full 90% of these students are still math-based majors.

### You are eligible for MESA if you are:

- Majoring in science technology engineering or math (defined as calculus math based)
- Currently taking or have taken and passed math above elementary algebra (math 131) at pcc or another community college
- Plan to transfer to a four year institution in a science tech engineering math major
- Taken over 24 units college units
- Financially disadvantaged (eligible for bogw, pell grant, cal grant, dream act, calworks, general relief, and other state and federal financial resource programs)
- Educationally disadvantaged (first generation college student, or took below college level math at pcc or other community college.

# Empowerment Programs & Support Services

## MaS2 (More Math and Science)

The MaS2 program provides you with opportunities to connect to PCC and explore STEM.

### Eligibility requirements

The MaS2 program is open to any PCC student who is majoring or may be interested in majoring in an area of science, technology, engineering, and math (STEM) and has accumulated less than 54 units.



### Jacqueline Javier

**Department:** Work-Based Learning

**Identity:** Mexican-American

**Latino/a/x role model:** Selena Quintanilla-Pérez

### What makes me Latino/a/x proud:

¡Las ganas! I was raised in a family that believes anything is possible through hard work and dedication. I am a proud Latina who is devoting her life to serving students by sharing the same message that got me here - ¡si se puede!

### Personal Message:

The best piece of advice I can give students is to find a mentor (or two), but ideally three! It's incredibly important to your academic, personal, and career development. Plus, we all benefit from mentorship no matter where we are in life. Mentors help us gain new knowledge, meaningful advice, and overall motivation.

Contact: Melva Alvarez  
Email: [mgalvarez@pasadena.edu](mailto:mgalvarez@pasadena.edu)  
[pasadena.edu/academics/stem/academics](https://pasadena.edu/academics/stem/academics)



### Yuliana Valdes Samson

**Department:** English

**Identity:** Latinx

### Latino/a/x role model:

My Latinx colleagues at PCC are my role models. I was encouraging to see their faces in positions all across campus when I first started working at PCC. I know that it is especially encouraging for our students to see people like themselves serving them in higher education.

### What makes me Latino/a/x proud:

What makes me proud to be Latinx is coming from passionate and compassionate culture. Our culture emphasizes community and an appreciation of life no matter the circumstances. We are a resilient group.

### Personal Message:

We are our ancestors' hope and blessing. Let's live accordingly.

# Empowerment Programs & Support Services



PROGRAM *for* ACADEMIC SUPPORT SERVICES

## Program for Academic Support Services (PASS)

PASS works with current PCC students who are from a low-income family, are first generation college students, and/or have a disability. PASS is designed to increase the retention, graduation and transfer rates of our students. We do so by providing a holistic approach to student development and student success. As a program participant, you will gain knowledge and skills to empower you to achieve your academic goals.

PASS offers students counseling, academic tutoring, financial aid and scholarship assistance, workshops, campus tours, field trips transfer support and priority registration. It's our goal to prepare you with the skills and motivation you need to succeed, graduate from PCC and transfer to a four-year institution.

Room D-112

Phone: (626) 585-7815

Email: [pass@pasadena.edu](mailto:pass@pasadena.edu)

[pasadena.edu/academics/support/trio-programs/pass](http://pasadena.edu/academics/support/trio-programs/pass)

Apply: [pasadena.edu/academics/support/trio-programs/pass/application.php](http://pasadena.edu/academics/support/trio-programs/pass/application.php)





# Empowerment Programs & Support Services

## The Puente Project



### **PCC Puente Project Vision:**

The vision of the PCC Puente Project is to empower students to become change agents in higher education, their professional fields, and their communities. Puente students have the capacity to break cycles of poverty and reform systems of oppression to create a more just society.

### **PCC Puente Project Mission:**

The mission of PCC's Puente Project is to increase the number of educationally disadvantaged students who enroll in four-year colleges and universities, earn college degrees and return to the community as mentors and leaders to future generations.

### **Program Description:**

Through membership in a year-long cohort in English, counseling, and mentoring, students develop academic and personal strategies to reach their educational goals. Additionally, PCC Puentistas:

- Stay involved and connected through peer mentoring, tutoring, and other job placements on campus.
- Develop student leadership through participation in Puente club and other leadership opportunities.
- Access financial support through job placements, EOPS, financial aid, and scholarships.
- Have a pathway to UC through enrollment in UCLA + UC Riverside Summer Programs.

Phone: (626) 585-7860

Email: [jpcarreon@pasadena.edu](mailto:jpcarreon@pasadena.edu)

[ebrivasgomez@pasadena.edu](mailto:ebrivasgomez@pasadena.edu)

[pasadena.edu/academics/support/puente](http://pasadena.edu/academics/support/puente)



# Empowerment Programs & Support Services



## Queer and Undocumented Empowerment Support to Thrive (QUEST)

The mission of the QUEST (Queer and Undocumented Empowerment Support to Thrive) Center at Pasadena City College is to create an inclusive space for LGBTQ+ and Undocumented students, staff, and faculty. We are dedicated to empowering students through their journey of academic success, fulfillment, and growth.

We offer a range of resources, services, and individualized support tailored to one's specific needs and aspirations. We welcome you to stop by the center, meet our QUEST team, learn about our services, attend a workshop, or simply hang out in our lounge area. Please check out the resources and services listed on our page and if you do not find what you are looking for, please reach out anyway.

### Resources and Services:

- Educational Plan Counseling
- Immigration Legal Services
- Financial Support:
- AB 540 Forms
- California Dream Act Application
- Rapid Response Emergency Aid
- Zero Textbook Cost Program
- Scholarships
- Scholarship Lists
- Application Assistance
- Preferred Name Change Requests
- Health Resources
- Personal Counseling
- Student Health Center
- Dental Hygiene Clinic
- Campus Allies: Staff and Faculty

The QUEST Center represents the long-standing work and advocacy of the Safe Zone Coalition, Safe Learning Environment Ad-Hoc Committee, and countless faculty, staff, and manager allies past and present at Pasadena City College who advocated for this space

**LGBTQ+ ALLIES:** [CLICK HERE](#)

**UNDOCUMENTED ALLIES:** [CLICK HERE](#)

Room R-422  
Phone: (626) 585-3280  
Email: [quest@pasadena.edu](mailto:quest@pasadena.edu)  
[pasadena.edu/campus-life/quest-center](http://pasadena.edu/campus-life/quest-center)

# Empowerment Programs & Support Services

## TRIO

Phone: (626) 585-7011

[pasadena.edu/academics/support/trio-programs](https://pasadena.edu/academics/support/trio-programs)

### TRIO Programs

The TRIO Programs at PCC are Federal outreach and student services programs designed to identify and provide services for individuals from disadvantaged backgrounds.

The goal is to help give students from low-income families an equal opportunity to earn a college education. PCC's Federal TRIO Programs (TRIO) are U.S. Department of Education outreach and student services programs designed to serve low-income individuals, first-generation college students, and individuals with disabilities, progress through the academic pipeline from middle school to college.

At PCC, we have four TRIO programs. Three of them help prepare high school students for college, and one of them supports current PCC students to transfer. To learn more visit:

#### **TALENT SEARCH**

**A pre-college support program for students who are:**

- Enrolled in grades 9 - 12 at one of our target schools in Pasadena or El Monte.
- Have the desire to attend college.
- Demonstrate academic need.

#### **UPWARD BOUND**

**A pre-college support program for students who:**

- Have completed 12 units at PCC.
- Are low-income or a first-generation college student or have a disability.
- Want to earn an AA / AS degree or a certificate and transfer to a university.
- Demonstrate academic need.

#### **PROGRAM FOR ACADEMIC SUPPORT SERVICES (PASS)**

**PASS is for current PCC students who:**

- Have completed 12 units at PCC.
- Are low-income or a first-generation college student or have a disability.
- Want to earn an AA / AS degree or a certificate and transfer to a university.
- Demonstrate academic need.

#### **UPWARD BOUND MATH SCIENCE**

**A pre-college support program for students who:**

- Plan to pursue a college degree in STEM.
- Attend one of our target high schools in Pasadena or El Monte.
- Are low-income or a first-generation college student.

# Empowerment Programs & Support Services



## Ujima We Are Black Excellence

Ujima is a learning community designed to enhance the experience of African-American Students through counseling, instruction, mentoring and community building. As a member of the Ujima program, you will be supported both in and out of the classroom.

### As an Ujima student you will receive:

- Priority Registration
- Community and peer mentoring
- Dedicated Ujima Academic Coaches and Counselors
- Cultural activities and events
- Leadership opportunities and networking
- Culturally Centered Coursework in Ujima dedicated classes
- Ujima Rites of Passage
- Ujima Club
- Ujima Limited Edition Gear
- On Campus Family
- Success strategies and goal setting for the future
- College Tours



Learn about our culture, who we are and how to better ourselves and our community.

Email: [gllopez@pasadena.edu](mailto:gllopez@pasadena.edu)

Blackademia Contact:

Phone: (626) 585-7255

Email: [blackademia@pasadena.edu](mailto:blackademia@pasadena.edu)

[pasadena.edu/academics/support/black-student-success/ujima5](https://pasadena.edu/academics/support/black-student-success/ujima5)



# Empowerment Programs & Support Services

## Veterans Resource Center



The Veterans Resource Center (VRC) is a centralized hub at PCC for veterans, military members and their dependents. From processing your educational benefits to helping you while at PCC to connecting you to community resources and services – we are here to ensure you get the support you need to continue your academic career and succeed.

Phone: (626) 585-7226 Ext. 4  
Email: [pccvets@pasadena.edu](mailto:pccvets@pasadena.edu)  
[pasadena.edu/academics/  
support/veterans-services](https://pasadena.edu/academics/support/veterans-services)



**Elizabeth Contreras**

**Department:** Pathways FYE Success Coach

**Identity:** Latina

**Latino/a/x role model:** My beautiful Mamá!

**What makes me Latino/a/x proud:**

I am proud to be Latina! My culture has taught me how to be a hard worker, to give back, and that community and family are at the core of my values. The challenges that I have faced only made me stronger as a result, trust the process!

**Personal Message:**

"Looking at the past must only be a means of understanding more clearly what and who they are so that they can more wisely build the future." - Paulo Freire

It's a challenging road at times to get to where you want to be, but we must understand that learning and growth is not linear. You will find you have so much strength; keep pushing, you'll always have support in us! There's beauty in being able to identify things we want to achieve and work hard towards them, but doing so with a strong community and support system makes that journey so much more enjoyable!

# Tutoring & Success Centers

## Virtual Support Center

Have questions? Even while our physical campuses are closed, we are open to providing information and support for your success! Use our Virtual Support options to get answers, or check out the [FAQ!](#)

Monday - Friday  
9 a.m. - 5 p.m.

1. Visit the [Virtual Support Center Login Page](#)
2. Sign-in with your Lancer ID#
  - If you don't have a Student ID #, select the "Not a student yet" under the sign-in button.
3. When it's your turn, a PCC team member will contact you to start your session!

Note: When our team member calls, the phone number may show "no caller ID" or it may be a "626" phone number. If we don't reach you, they will leave a message. If they missed you, please sign up again.

### Non-Business Hours

When the Virtual Support Center is closed, you can reach out to us by phone or email – our PCC operators are here to help you!

Email: [gotopcc@pasadena.edu](mailto:gotopcc@pasadena.edu)  
Phone: (855) GO-TO-PCC

## Technology Support & Remote Support

We know that learning online can be confusing. We're committed to making sure you have what you need to stay healthy and succeed in your studies. Visit the following website to help you with your online learning:

[pasadena.edu/about/president/coronavirus-updates/remote-classes-faq-for-students.php#access-to-technology](https://pasadena.edu/about/president/coronavirus-updates/remote-classes-faq-for-students.php#access-to-technology)

### Free Access to Campus WiFi

Parking Lot 3 is set up as a WiFi Parking Lot. You may park your car there and use Campus WiFi.

- This service is available every day from 7:30 a.m. to 8 p.m.
- You must stay in your vehicle with your car parked away from each other to promote social distancing
- As the campus is closed, no restrooms are available and access to campus facilities is prohibited.

# Tutoring & Success Centers

## Remote Tutoring

Pasadena City College's Academic Success Centers are still here for you! Just as most of your classes have moved to temporary remote instruction, so have PCC's Academic Success Centers. This means that you can now request remote tutoring services. In fact, at this time this is the only way to receive tutoring at PCC. Physical success centers on PCC campuses are currently closed to students, but we are excited to offer you remote tutoring instead.

Pasadena City College's Academic Success Centers are here to support your academic success, even and especially through this challenging time—we encourage you to take advantage of remote tutoring!

[pasadena.edu/academics/support/success-centers/online-tutoring.php](https://pasadena.edu/academics/support/success-centers/online-tutoring.php)

### Computer Learning Center

M-F, 9 a.m. – 5 p.m.

Email: [lac@pasadena.edu](mailto:lac@pasadena.edu)

Follow the steps on CLC's remote tutoring schedule to request tutoring.

### Learning Assistance Center

M-F, 9 a.m. – 5 p.m.

Email: [lac@pasadena.edu](mailto:lac@pasadena.edu)

Follow the steps on LAC's remote tutoring schedule to request tutoring.

### Math Success Center

M-F, 9 a.m. – 5 p.m.

Email: [msc@pasadena.edu](mailto:msc@pasadena.edu)

Please follow the steps found on the MSC's home page to access remote tutoring.

### Natural Science Center

M-Th 9 a.m. – 7 p.m.

F, 9 a.m. – 5 p.m.

S, 4 p.m. – 7 p.m.

Email: [naturalsciencecenter@pasadena.edu](mailto:naturalsciencecenter@pasadena.edu)

Please email the Natural Science if you are not able to schedule an appointment.

### Social Science Learning Center

M-F, 9 a.m. – 6 p.m.

Email: [socialsciencecenter@pasadena.edu](mailto:socialsciencecenter@pasadena.edu)

### The Speech Center

M-Th 10 a.m. – 10 p.m.

F-Sa 12 p.m. – 10 p.m.

Su 6 p.m. – 10 p.m.

Email: [speechcenter@pasadena.edu](mailto:speechcenter@pasadena.edu)

### Writing Support Center

M-Th, 9 a.m. – 7 p.m.

F, 9 a.m. – 2 p.m.

Email: [writingsupportcenter@pasadena.edu](mailto:writingsupportcenter@pasadena.edu)

### CTE Tutoring

M-F, 9 a.m. – 5 p.m.

Email: [lac@pasadena.edu](mailto:lac@pasadena.edu)

Follow the steps on CTE's remote tutoring schedule to request tutoring.

# Tutoring & Success Centers



## Start Getting Support

Located throughout campus, our centers are open to PCC students and are here to support you in your academics. Each center offers a variety of services – tutoring, access to technology, workshops, study space, course materials and more – all geared towards ensuring your academic success at PCC.

## Computer Learning Center

When campus is open, the Computer Learning Center provides PCC students and faculty with three well-equipped computer labs for lectures, assignments, tutoring, and homework.

The CLC lab in D-104 is an open lab for currently enrolled PCC students to use. D-101 is a dual-use room, functioning as a classroom at scheduled times and as an open lab when no classes are scheduled and overflow computer use is occurring. W-101 is only available for instructors to schedule in advance for class use.

D-103 (CLC Service Window)  
D-102 (Staff Office)  
Phone: (626) 585-7357  
Email: [aclawrence@pasadena.edu](mailto:aclawrence@pasadena.edu)

D-300  
Phone: (626) 585-7230  
Email: [lac@pasadena.edu](mailto:lac@pasadena.edu)

## Learning Assistance Center

Take advantage of the FREE resources at the Learning Assistance Center (LAC)!

The LAC offers academic support to help improve your scholastic success. Our staff and tutors are here to actively engage and support you by helping you with everything from your study habits to specialized tutoring in specific classes.



# Tutoring & Success Centers

R-406

Phone: (626) 585-7458

Email: [msc@pasadena.edu](mailto:msc@pasadena.edu)

[pasadena.edu/academics/support/success-centers/math-success-center](http://pasadena.edu/academics/support/success-centers/math-success-center)

## Math Success Center

The Math Success Center is your on-campus resource for quality math tutoring and homework help. We offer tutoring for most math courses including STAT 50. We also offer study rooms.

## Speech Success Center

The Speech Center at Pasadena City College offers tutoring for all Speech courses offered at PCC. We also offer help to any student who needs help on a presentation. Practicing a presentation on your own can only help so much. Practicing in front of one of the tutors will better prepare you for when you actually have to present your speech!

D-302

Phone: (626) 585-5311

Email: [speechcenter@pasadena.edu](mailto:speechcenter@pasadena.edu)

[pasadena.edu/academics/support/success-centers/speech-center](http://pasadena.edu/academics/support/success-centers/speech-center)

### Services Provided:

- One On One Tutoring
- Computer Labs & Practice Rooms
- Help with speech preparation and overcoming public speaking anxiety
- Help selecting a topic and creating and editing an outline
- Coaching in speech delivery tips and memorizing techniques
- Group Presentation Strategies
- Argumentation and Debate Strategies
- Understanding Communication Theories

Phone: (626) 594-5186

Email: [writingsupportcenter@pasadena.edu](mailto:writingsupportcenter@pasadena.edu)

[pasadena.edu/academics/support/success-centers/writing-center](http://pasadena.edu/academics/support/success-centers/writing-center)

## Writing Support Center

The mission of the PCC Writing Support Center is to promote the development of good writing skills necessary for all PCC students to become confident, independent writers. We work to accomplish our mission through one-on-one tutoring and providing students with resources such as grammar handouts, directed learning activities, and workshops to help them improve their writing.

# Tutoring & Success Centers

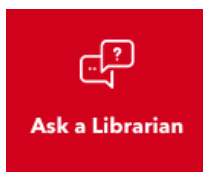
## Library

PCC Library is here to support your academic success!

PCC Librarians are experts at helping students with academic research and citation. We can guide you through all phases of the research process, including:

- Understanding research assignments
- Selecting a topic
- Developing research strategies and keywords
- Finding credible sources
- Citing sources

Librarians provide one-on-one research assistance through 24/7 live chat support online. Research consultations, via Zoom or by phone, are also available by appointment.



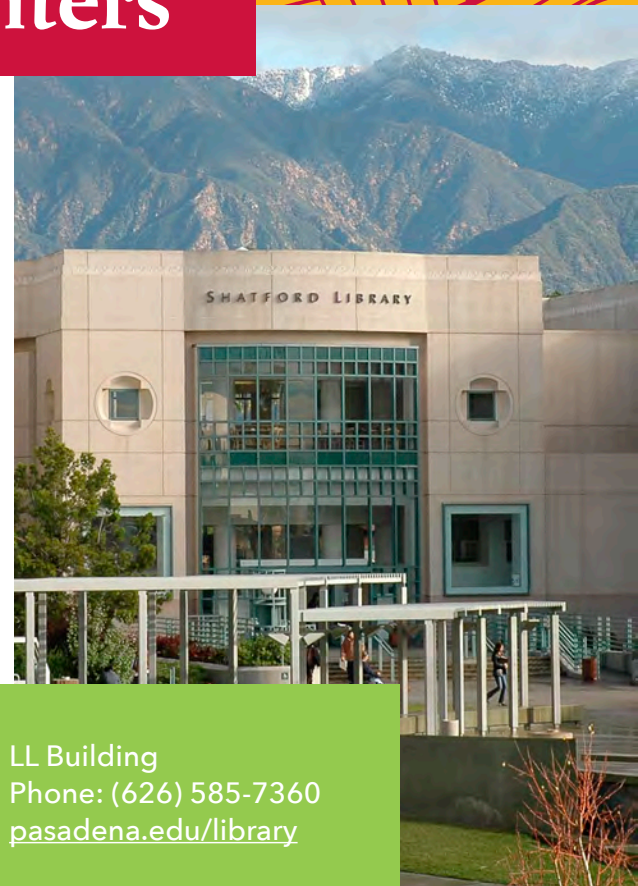
As the campus gateway to a world of information, the Library also offers credible resources in both print and electronic formats. Explore our expansive collection of databases, ebooks, and online resources by using your current LancerPoint login.

### PCC Library offers:

- Pick-up service of print books, textbooks, and graphing calculators for semester-long loan
- eBooks, streaming video databases, access to scholarly journals
- Subject-based research guides with video tutorials

### Library Services for 2020-2021:

[libguides.pasadena.edu/remoteservices](http://libguides.pasadena.edu/remoteservices)



LL Building  
Phone: (626) 585-7360  
[pasadena.edu/library](http://pasadena.edu/library)



### Yvette Valdez

**Department:**  
Counseling -  
Transfer Center

**Identity:** Latina,  
Mexican Descent

**Latino/a/x role model:** Eva Longoria

### What makes me Latino/a/x proud:

I love my brown skin, my language and everything that makes me Latina! I am proud to be a descendent of hard-working, resilient, humble souls! From my values and beliefs to the Mexican food I eat...I love it all! Proud Latina with Mexican roots is who I am. I hope that the generations that follow continue to embrace the beauty in our Latino/a/x community!

### Personal Message:

"Am I good enough? Yes - I am." - Michelle Obama

# Student Advisory Equipo

## Purpose

The purpose of the Student Advisory Equipo is to include students in the design and critical components of the Guided Pathway framework and other campus-wide initiatives at Pasadena City College (PCC). The Equipo is funded by the Abriendo Caminos Title V HSI grant, which recognizes the importance of students' voices, ideas, perspectives, and insights on activities, policies, and proposals leading to the goals of the grant. We also recognize the importance of peer mentors and providing a sense of community to our Latina/o/x students.

## Mission

To promote student success by increasing student engagement in the Guided Pathways framework and other campus-wide initiatives. To foster a campus environment where Latino/a/x students and other marginalized populations are represented and supported to build community and peer relationships.

## Values

The Abriendo Caminos team values I.M.P.A.C.T.O. - Inclusion, Mentorship, Progress, Advocacy, Community, Transparency, and Open Access.



**Desiree Zuniga**

**Department:** Academic Counselor, Student Advocate

**Identity:** Latina, Chicana, and a proud daughter of immigrants.

**Latino/a/x role model:** Frida Kahlo & Dolores Huerta

**What makes me Latino/a/x proud:**

The diversity, the history, the food, the music and the "¡Sí, Se Puede!" mentality.

**Personal Message:**

Never give up on your dreams! Being a trailblazer will have you questioning your sense of direction and abilities but never forget that every step you take is your ancestors' wildest dreams.

## Goals

- To increase student retention and success for Latino/a/x students
- To foster a sense of belonging and importance to our Latino/a/x community
- To help build community and support to Latino/a/x students
- To connect students with campus resources and academic support
- To promote student voices in campus-wide initiatives and changes

# President's Latino Advisory Committee



The mission of the President's Latino Advisory Committee is to help enhance the educational success of Latino students at PCC.

PLAC was formed for the purpose of providing input directly to PCC's Superintendent/President on the needs of the large Latino community served by PCC. It is comprised of both community members and PCC faculty and staff. We welcome involvement from the local business and the civic community.

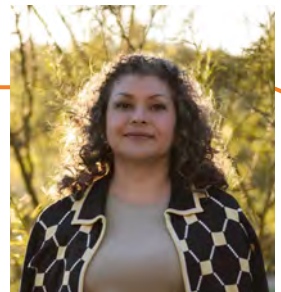
## PLAC Also Raises Funds For Scholarships

PLAC also raises funds for scholarships. We have awarded over \$150,000 in scholarships to qualified students. The recipients excel academically, are student leaders and volunteer in the community. The funds for the scholarships were raised from PLAC committee members, PCC faculty and staff, local businesses and community members who want to support the educational achievements of students who attend PCC.

*"I realized that as a non-traditional student, I have the wisdom to change because it is never too late for positive change."* This scholarship recipient graduated from a local high school in 1996 and worked for 15 years before being laid-off. Faced with unemployment and raising two children on their own, they decided to take the leap and return to school and pursue a degree that would allow them "to flourish in the future". Here at PCC, they developed a love for environmental causes and completed an Associate degree in business administration. They are now at a local university and that much closer to their ultimate career goal of developing sustainable community housing.

[Apply for the PLAC Scholarship](#)

[Donate Now](#)



**Raquel Torres-Retana, Ed.D.**

**Department:** PCC  
Rosemead

**Identity:** Chicana

**Latino/a/x role model:**

My mother, Otilia Gonzalez Torres (RIP).

**What makes me Latino/a/x proud:**

The traditions based on family and indigenous spirituality; honoring mother earth and understanding we are connected to all and to each other.

**Personal Message:**

It takes courage to live your authentic self.



# Association of Latino Employees



## Association of Latino Employees (ALE)

[pasadena.edu/faculty-and-staff/ale](http://pasadena.edu/faculty-and-staff/ale)

### Mission Statement

The Mission of the Association of Latino Employees (ALE) is to empower and engage Latina/o/x employees at Pasadena City College (PCC) by developing, advocating and responding to the academic, social, political and economic needs of the community.

### Purpose

The Association of Latino Employees (ALE) was established in April 2012 to support the needs and interests of Latina/o/x employees at Pasadena City College (PCC). ALE shall promote the concerns of the College's Latina/o/x employees and serve as a voice for Latina/o/x employees. ALE shall support the mission and integrity of PCC.

### ALE shall:

- Actively participate in public service designed to assist Latinas/os/xs and the community at large through compassionate mentorship
- Provide representation of Latina/o/x interests in College committees
- Promote equity in hiring Administration, Faculty, and Staff
- Educate campus community related to Latina/o/x issues
- Enhance the recruitment of prospective Latina/o/x students and the retention of Latina/o/x students attending Pasadena City College
- Cultivate a sense of community among campus Latina/o/x employees
- Provide opportunities for social and professional networking
- Strengthen communication and collaboration with various campus groups with similar goals and objectives
- Support outreach initiatives as determined by ALE

# Association of Latino Employees

## ALE Board Members

**Carlos "Tito" Altamirano**  
President

**Angie Alvarez**  
Vice President

**Sandra Parra**  
Secretary

**Dr. Iris Lucero**  
Treasurer

**Melva Alvarez**  
Community Relations Chair

**Dr. Cristina Salazar-Romo**  
Educational Awareness Chair

**Margarita Regalado Rivera**  
Scholarship Chair

**Tanith Quintanilla**  
Social/Fundraising Events Chair

**Rudy Aguilar**  
Classified Representative

**Desiree Zuniga**  
Faculty Representative

**Eladio Fernandez**  
Management Representative

## ALE Scholarships

Each year the Association of Latino Employees (ALE) will award a total 2 scholarships: 1 Latina/o/x student employee and 1 Latina/o/x employee. The following is a list of minimum requirements for both:

### Latina/o/x Student Employee Scholarship:

- Student worker or professional expert at PCC
- Student at PCC, other college or University
- Student employee must be nominated by you, an ALE dues-paying member

### Latina/o/x Employee of the Year:

- Full-time employee at PCC
- Full-time employee must be nominated by you, an ALE dues-paying member

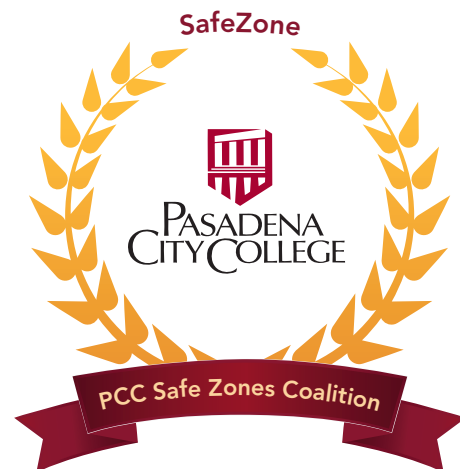


# Safe Zones Coalition



[pasadena.edu/campus-life/safe-zones/about/safe-zone-allies.php](https://pasadena.edu/campus-life/safe-zones/about/safe-zone-allies.php)

The PCC Safe Zones Coalition training identifies, educates, and supports allies. Allies are individuals within the PCC community who consider themselves to be knowledgeable about the needs of Lesbian, Gay, Bisexual, Transgender, and Questioning (LGBTQ) and/or Undocumented people. Individuals who complete the training choose to provide support by displaying a sticker or lapel pin that indicates that they are an advocate and have cultural competence for those who are Undocumented and/or LGBTQ. By building a community of allies, we will foster and support greater student success.



## Objectives

We live in an ever-diversifying society, and in order to be supportive and aware of different identities, perspectives, and experiences, we must pursue (and provide) opportunities to learn about different identities, perspectives, and experiences – particularly ones that are stigmatized, marginalized, and largely silenced.

Safe Zone Ally Workshops are wonderfully unique opportunities for people to talk, learn, and ask questions about sexuality and gender in a non-judgemental, safe, educational environment. Safe Zones Trainings are a safe space free of judgments where people can honestly communicate with each other, educate one another, and ask any and all questions.

# Safe Zones Coalition

Safe Zone Ally Workshops are opportunities on college campuses for staff, faculty, and community members to learn a little more about how different aspects of a person's identity influence our everyday experiences, and often a chance to learn about these topics from individuals within the university community.

## **Ally Training Objectives include:**

- Training a network of empathetic allies on campus
- Making this network visible and accessible by posting decals on doors and pins on appropriate locations
- Ending discrimination and bias against LGBTQ and Undocumented campus community members
- Assisting LGBTQ & Undocumented students in their social, personal and academic development
- Providing a shared learning experience

## **The Safe Zones Team**

### **Carrie Afuso**

Office of Student Life (Advisor)

### **Juan Pablo Carreon**

Puente Counselor/Coordinator and  
ASCEND Counselor (Faculty)

### **Luis R. Cervantes**

Safe Zones Coalition (Advisor)

### **Yajaira De La Paz**

Robert G. Freeman Center for Career and  
Completion (Job Developer/Employer  
Relations)

### **Jeff Hupp**

Counseling (Faculty)

### **Kathy Kottaras**

English Department (Assistant Professor)

### **Dr. Cecilia Medina-Adamo**

Counseling (Faculty)

### **Brianjoseph E. Pangan**

Community Education Center  
Counseling Department (Faculty)

### **Dr. Raquel Torres-Retana**

PCC at Rosemead (Dean)



# Admissions & Financial Aid



## Admissions

Join 30,250+ students from every background imaginable, all driven by the possibility of fulfilling an educational goal and jump-starting a career. Pursue a degree or certificate, complete classes for transfer, or prepare to enter the workforce – whatever you choose, we will give you the opportunities, resources, and support you need to succeed.

Room L-113

Monday - Thursday  
8 a.m. - 6:30 p.m.

Friday  
8 a.m. - 4 p.m.

[pasadena.edu/admissions-and-aid/admissions-and-records](https://pasadena.edu/admissions-and-aid/admissions-and-records)

### You may be eligible for admission to PCC if you are:

- A high school graduate
- Not a high school graduate, but over 18 years old.
- A 12th-grade-or-below student who meets Concurrent or Dual Enrollment eligibility.

### You need to complete an Application to PCC if:

1. You have never been a student at PCC
2. You haven't attended PCC for a year or more (i.e. you missed both Fall and Spring semester).
3. You are attending or have attended PCC as a concurrent enrollment (High School or K-8 student).
4. You submitted an application for a future semester, but now wish to attend PCC for the current semester.
5. You applied for a previous term but did not enroll in classes.

### I'm not a US citizen or a Permanent Resident. Can I still attend PCC?

Yes, you can attend PCC even if you are not a US Citizen or permanent resident. After you have submitted your [application to PCC](#), visit the [Office of Admissions and Records](#) to complete a [California Nonresident Tuition Exemption](#) form and be exempt from paying nonresident tuition fees.

# Admissions & Financial Aid

## Financial Aid

### Let us help you pay for college

It costs less than you think. PCC offers you all the advantages of a four-year college education – top faculty, a wide range of courses and degrees and the support you need – all at less than half the cost. Plus, the Office of Financial Aid and our knowledgeable advisers are here to help you find options to make your education affordable.

### Types of aid

Financial Aid is any source of funds that are available to help you pay for college. Most types of financial aid comes from federal and state programs, which require completing the FAFSA or the California Dream Act to determine eligibility and award you funds based on your demonstrated need. Additionally, there are several institutional aid programs that award funds based on need and/or merit. Use the resources below to better understand options available to you to help you pay for college.

#### Grants

A grant is a type of financial aid that you don't need to pay back. The amount of grant money awarded to you is based on demonstrated financial need (which is decided by your FAFSA application).

#### California Promise Promise Grant (BOGW)

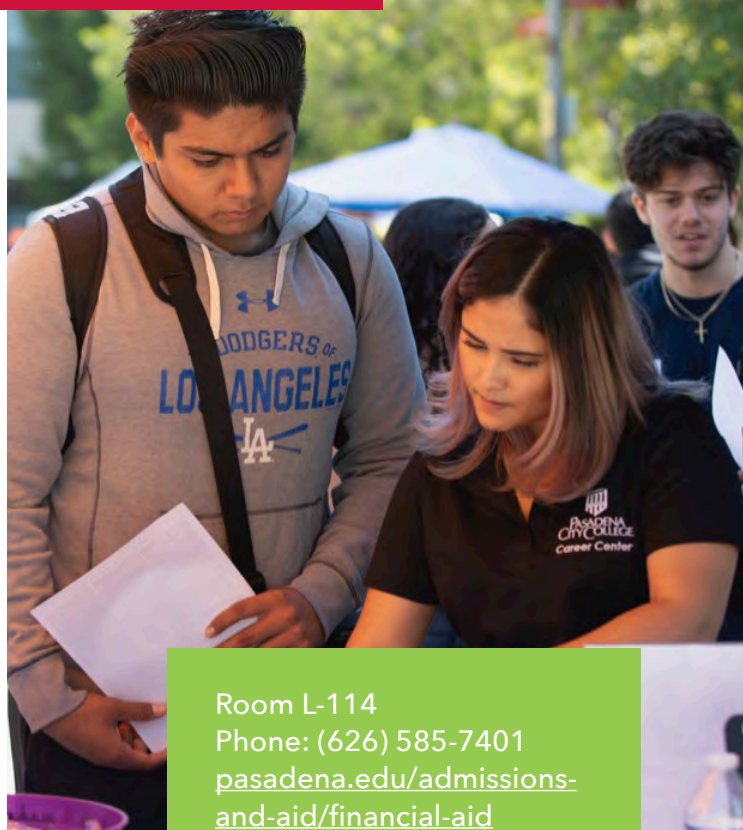
The California College Promise Grant waives your enrollment fees if you are a California resident and qualify by meeting certain income requirements or other eligibility requirements outlined on the application

#### Work Study

Our Federal Work-Study (FWS) program offers on and off-campus employment opportunities for PCC students with a demonstrated financial need. If you are granted Work Study, you may work up to 19 hours per week while school is in session to earn money to go towards your cost of tuition, books, and fees.

#### Scholarships

Scholarships are awarded funds that you do not have to pay back. Many scholarships are based off academic merit or other achievements, while some are also need-based.



Room L-114

Phone: (626) 585-7401

[pasadena.edu/admissions-and-aid/financial-aid](https://pasadena.edu/admissions-and-aid/financial-aid)

Monday - Thursday  
8 a.m. - 6:30 p.m.

Friday  
8 a.m. - 4 p.m.

# Admissions & Financial Aid



## California Dream Act

If you are not a US Citizen or permanent resident but are attending college, you may still be eligible for financial aid through the California Dream Act!

### What is the California Dream Act?

The California Dream Act allows students who are not US Citizens or permanent residents but meet AB 540 Criteria to apply still for and receive non-state funded scholarships to help pay for college. Originally authored by Assembly Member Gil Cedillo (Los Angeles), it became law through the passage of two Assembly Bills, AB 130 and AB 131.

AB 130 allows students who meet AB 540 criteria to apply for and receive non-state, privately-funded scholarships for public colleges and universities.

AB 131 allows students who meet AB 540 criteria to apply for and receive state-funded financial aid such as institutional grants, Cal Grant and Chafee Grant.

Download PCC's AB540 Financial Aid Brochure

### Who Is Eligible?

You are eligible for the Dream Act if you meet the following AB540 criteria:

- You are not a citizen or permanent resident of the United States
- You attended a California high school for a minimum of three years or you have credits earned at California high school that are equivalent to three or more years of full-time high school coursework and a total of three or more years of attendance in California elementary schools, California secondary schools, or a combination of those schools.



# Admissions & Financial Aid



## Eligibility continued:

- You graduated from a California high school, passed the California High School Proficiency Exam (CHSPE) or got a General Equivalency Diploma (GED, also called the General Educational Development test) or other state-authorized high school equivalency exam such as HiSET or TASC.
- You are entering as a current student at or are currently enrolled at a California Community College.
- If required, you will complete an affidavit stating you have filed (or will file when you are eligible to do so) for proper immigration status.

## How to Apply

If you are eligible based on the above criteria, complete the [CA Dream Act Application](#). This link will allow you to complete a new application and make corrections to an existing application.

When applying, make sure to enter the school code for Pasadena City College (001261).

[Apply Now!](#)



# Admissions & Financial Aid

## Latinx Scholarships

The Hispanic Scholarship Fund

[www.hsf.net](http://www.hsf.net)

Congressional Hispanic Caucus Institute

[www.chci.org/scholarships](http://www.chci.org/scholarships)

HACU (Hispanic Association of Colleges and Universities)

[www.hacu.net/hacu/Scholarships.asp](http://www.hacu.net/hacu/Scholarships.asp)

Hispanic Scholarship Consortium Scholarship Program

[www.hispanicscholar.org](http://www.hispanicscholar.org)

MALDEF (Mexican American Legal Defense and Educational Fund)

[maldef.org/leadership/scholarships](http://maldef.org/leadership/scholarships)

META Foundation Scholarships

[meta-foundation.org/scholarship-program/scholarship-program/overview.html](http://meta-foundation.org/scholarship-program/scholarship-program/overview.html)

PepsiCo Cesar Chavez Latino Scholarship

[chavezfoundation.org/CCF\\_scholarship](http://chavezfoundation.org/CCF_scholarship)

TELACU

[telacu.com](http://telacu.com)



# Admissions & Financial Aid

## Other Scholarships & Search Engines

**FastWEB Scholarship Search**  
[www.fastweb.com](http://www.fastweb.com)

**Aid (scholarships)**  
[www.finaid.org](http://www.finaid.org)

**Scholarship Search**  
[www.scholarships.com](http://www.scholarships.com)

**National Scholarships at all levels**  
[scholarships.fatomei.com](http://scholarships.fatomei.com)

**Minority Scholarships**  
[www.blackexcel.org/200-Scholarships.html](http://www.blackexcel.org/200-Scholarships.html)

**CollegeBoard**  
[bigfuture.collegeboard.org/pay-for-college](http://bigfuture.collegeboard.org/pay-for-college)

**Finding the Right Scholarships**  
[www.testprepreview.com/college-scholarships.htm](http://www.testprepreview.com/college-scholarships.htm)

**Unigo**  
[www.unigo.com](http://www.unigo.com)

**Jack Kent Cooke Scholarship**  
[www.jkcf.org/our-scholarships/college-scholarship-program](http://www.jkcf.org/our-scholarships/college-scholarship-program)

**The Jackie Robinson Foundation**  
[www.jackierobinson.org](http://www.jackierobinson.org)

**Additionally, visit the PCC Foundation**  
[pasadena.edu/foundation](http://pasadena.edu/foundation)



**Ingrid Sotelo Arana**

**Department:**  
Counseling

**Identity:**  
Mexican-American, Salvadoran-American, Latina

**Latino/a/x role model:** My parents

**What makes me Latino/a/x proud:**

The strength and wisdom in my bloodline is what makes me proud to be Latina. My parents, family and ancestors are a reminder everyday of the beautiful, impactful and resilient lineage I'm made up of and get to teach my daughter about. Mi familia viene de Mexico, El Salvador, y Guatemala. This means I'm also proud of tacos, pupusas and pepian.

**Personal Message:**

"Always believe that the impossible is always possible and that It's never too late to get in touch with your roots." - Selena Quintanilla

# Student Life

## The Office of Student Life

Located in the Campus Center, the Office of Student Life offers a wide variety of activities, programs, and services to assist students in achieving a balanced educational experience. We provide an array of student leadership opportunities, involve students in college governance, provide support and guidance in co-curricular activities, and produce and support cultural awareness activities and services. Further, our office sponsors and assists in educational, recreational and club programs and events, offers volunteer opportunities on campus and in the community, provides financial assistance in the funding of programs, and individual student scholarships, and more.

Room CC-105  
Phone: (626) 585-7384  
[pasadena.edu/campus-life/student-life](http://pasadena.edu/campus-life/student-life)

Room CC-105B  
Phone: (626) 585-7980  
[pasadena.edu/campus-life/associated-students](http://pasadena.edu/campus-life/associated-students)

## The Associated Students

The Associated Students are PCC's student body consisting of 12 current students that are elected annually to represent and work for the students.

Their goal is to provide students with information, entertainment, and services that are necessary to support them in reaching academic success at PCC and in the future.

## Clubs and Organizations

Clubs and Organizations are the best way to get involved at PCC. Like Salsa Dancing? Have an interest in Economics? Itching to play some Tennis? We have a club for you!

Room CC-105  
Phone: (626) 585-7384  
Email: [pccstudentlife@pasadena.edu](mailto:pccstudentlife@pasadena.edu)  
[pasadena.edu/campus-life/student-life/clubs-organizations.php](http://pasadena.edu/campus-life/student-life/clubs-organizations.php)

With over 80 clubs and organizations we have something for everyone. Cultural, Political and Academic organizations are all represented. Membership is open to all registered PCC students. Clubs meet the social, academic and cultural needs of our students. Most clubs meet during college hour on Tuesdays or Thursdays from 12 p.m. to 1 p.m..

# Student Life

## Rapid Response Emergency Aid (RREA)

Rapid Response Emergency Aid (RREA) is a collaborative campus effort to help PCC students if a financial crisis crops up which threatens your ability to stay in college.

Rapid Response Emergency Aid is meant to help out in times of unforeseen financial emergencies, which can happen at any time. This can be to cover certain eligible expenses, such as utilities, rent, medical and dental costs, or automobile expenses, as well as the money for books- or tuition-related expenses. But if you find yourself in financial hardship you couldn't have foreseen, and it means you may seriously need to drop out of college in order to take care of it, then Rapid Response might be able to help.

Room CC-105  
Phone: 626-585-7803  
Email: [rreg@pasadena.edu](mailto:rreg@pasadena.edu)  
[pasadena.edu/campus-life/  
student-life/emergency-aid.php](http://pasadena.edu/campus-life/student-life/emergency-aid.php)

Room CC-105G  
[pasadena.edu/campus-life/  
cross-cultural-center/index.php](http://pasadena.edu/campus-life/cross-cultural-center/index.php)

## Cross Cultural Center

The Cross Cultural Center (CCC) is the center for equity and social justice programs on campus. We bring speakers on campus, and plan programs and field trips that support students' success, broaden understanding across differences, raise awareness of power, and empower students to make a difference - all of which will help students think critically and develop their leadership skills.

## Lancer Leaders

Lancer Leaders program is a leadership development program open to all students on campus. You will gain leadership competences through programs, lectures, and workshops, which can have a positive impact on you and the community. It is possible to gain a Leadership Certificate with the completion of certain workshops and upon completion of a 20 hour service project. Please visit the [LancerLife](http://LancerLife) site and look for Lancer Leaders under organizations for times and full workshop descriptions.

To learn more visit: [pasadena.edu/campus-life/student-life/lancer-leaders.php](http://pasadena.edu/campus-life/student-life/lancer-leaders.php).



# Student Life

## Cardinal & Gold

Cardinal and Gold Leadership (C&G) believes that everyone can be a leader. Whether in the class, on the job or in the home, we all can have an impact. The C&G program is a leadership development program open to ALL PCC students.

C&G seeks to develop the leader in you, through hands-on workshops and activities. As a participant, you will gain knowledge, skills, and experience in leadership. A primary goal is learning first-hand knowledge through the application of learning; therefore, you and other C&G members will serve as the primary facilitators at local and regional leadership retreats and also staff the Lancer Leaders program. For more information, check out the Cardinal and Gold page on the [LancerLife](#) site.

To learn more visit: [pasadena.edu/campus-life/student-life/cardinal-gold.php](http://pasadena.edu/campus-life/student-life/cardinal-gold.php).

## Volunteer Opportunities

### **Are you interested in volunteering in the community?**

Every semester, the Cross Cultural Center invites local non-profit and governmental agencies to campus to recruit students as interns and volunteers. Check the [CCC's LancerLife site](#) for the latest information about our next fair!

To learn more visit: [pasadena.edu/campus-life/student-life/volunteer.php](http://pasadena.edu/campus-life/student-life/volunteer.php).

## LancerLife

Want to find out what's happening on campus? Or do you want to join a student club? Check out [LancerLife](#) and you can find out what's happening on campus with a click!

### **Here's what you get with LancerLife:**

- A list of all clubs with which you can get connected
- A calendar of events for all student clubs, so you know what's happening
- A personalized way to track your co-curricular involvement and out-of-classroom learning while at PCC
- Create a co-curricular transcript that lists all involvement and roles you've had with clubs and other programs on campus.
- Online event registration tools for holding an event at PCC

Alternatively, download the Corq app onto your phone and you'll always know the latest and greatest events on campus!

To learn more visit: [pasadena.edu/campus-life/student-life/student-involvement.php](http://pasadena.edu/campus-life/student-life/student-involvement.php)

# Athletics



Are you interested in participating in a sport? Join one of our 16 athletic teams, across 11 different sports. The Athletics Department gives you the opportunity for intercollegiate competition while also preparing you for your future endeavors in academics, athletics, and life.

## Athletic Teams at Pasadena City College

Athletic teams at Pasadena City College are members of the South Coast Conference except for football where the Lancers are members of the Southern California Football Association (SCFA). Both are affiliated with the California Community College Athletic Association (CCCAA). Visit the PCC athletics website at [pccclancers.com](http://pccclancers.com).

- Baseball
- Women's Badminton
- Men's Basketball
- Women's Basketball
- Men's Cross Country
- Women's Cross Country
- Football
- Men's Soccer
- Women's Soccer
- Softball
- Men's Swimming
- Women's Swimming
- Men's Track & Field
- Women's Track & Field
- Women's Volleyball
- Women's Water Polo

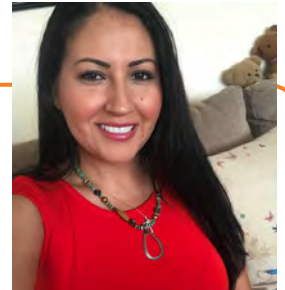


## The Athletic Zone

Your success in the classroom is just as important to us as your success on your field/court/pool of play. Our Academic Athletic Zone offers tutoring, advising and resources dedicated to supporting Student-Athletes. Visit the [Academic Athletic Zone](#).

The Stan Gray Academic Athletic Zone is here to give you the necessary academic and personal support so that you can succeed both on and off the field.

We offer a wide range of assistance programs such as academic support, multi-subject tutoring, counseling, and advisement. We strive to help you adjust to life at the community college level, establish effective study habits, and developing appropriate academic and career plans. We recognize your commitment to consistently achieve at a higher level in your sport and want to make it so you are able to fulfill that goal in the classroom as well.



### Carmen B. Rodriguez

**Department:** Speech Communication

**Identity:** Mexican-American

#### **Latino/a/x role model:**

My parents are my role models. They immigrated to the United States from Mexico not knowing the language, the culture. They raised their family here while working in factories earning minimum wage. They never gave up and they never complained about work. They always told us to go to school and get an education. My PCC role models are Dr. Raquel Torres-Retana and Dr. Cynthia Olivo. They are strong and intelligent Latinas; I respect and admire them.

#### **What makes me Latino/a/x proud:**

My Mexican roots, culture and heritage make me proud to be a Mexicana.

#### **Personal Message:**

Trust in the Lord with all your heart." Proverbs 3:5



# Bookstore & Food Services



Room CC-211  
Phone: (626) 585-7264  
Email: [lancerpantry@pasadena.edu](mailto:lancerpantry@pasadena.edu)  
[pasadena.edu/campus-life/lancer-pantry](http://pasadena.edu/campus-life/lancer-pantry)

## Lancer Pantry

- ✓ Healthy non-perishable food available.
- ✓ No cost to currently enrolled students in need.
- ✓ Only requirement is a valid PCC student ID

If you would like to donate, please contact the Lancer Pantry staff at (909) 257-7434 or email us at [lancerpantry@pasadena.edu](mailto:lancerpantry@pasadena.edu).

## PCC Bookstore

At the PCC Bookstore, you can buy and sell your textbooks, buy PCC clothing and accessories, find gifts and collectibles, school supplies, and much more!

Building B  
Phone: (626) 585-7378  
[www.bkstr.com/pasadenastore](http://www.bkstr.com/pasadenastore)





# Health & Wellness

## Student Health Center

Student Health Services is a comprehensive health center open to PCC students at no- and low-cost. We provide first aid and emergency services, treatment of short-term illnesses, sexual health counseling and treatment, and education in health promotion and health protection. Our confidential health services are provided by a professional staff of health counselors, registered nurses, registered dietitians, nurse practitioners and physicians.

### Services include:

- Illness & Injuries
- Women's Health Services
- Immunizations
- Quit Smoking Program
- Medications & Prescriptions
- Nutritional Counseling
- Emergency Response
- Health Sciences Program Clearance

Room D-105

Phone: (626) 585-7244

[pasadena.edu/campus-life/  
student-health-services/about](https://pasadena.edu/campus-life/student-health-services/about)

### Giselle Miralles

**Department:** English,  
Writing Support Center.  
College 1

**Identity:** Mexican and  
Filipino.

**Latino/a/x role model:**  
My mom! She is from Chihuahua, Mexico.

**What makes me Latino/a/x proud:**  
I am proud to be Latinx because it is a part of  
me that connects me to my mom.

"I am no longer accepting the things I cannot  
change. I am changing the things I cannot  
accept." - Angela Davis



# Health & Wellness

## Personal Counseling

Since 1950, the Personal Counseling Program has been an integral part of the educational experience at Pasadena City College (PCC) and has been working with students to creatively handle the stresses of college life. We help students learn how to master these challenges to enhance their psychological, interpersonal, educational, and career development while at PCC and long after leaving the campus. We are committed to increasing awareness and knowledge and expanding resources for students to successfully meet and handle the challenges of encountering new ideas, relating to others from diverse backgrounds, and coping with the transitions of adulthood.

### Services include:

- Individual Counseling
- Group Activities
- Social Services Support
- Resources
- Stress management
- Suicide Prevention
- Procrastination
- Insomnia
- COVID-19
- Self-Esteem
- Self Care
- Depression

**Dr. Cristina Salazar-Romo**

**Department:** ESL

**Identity:** Chicana

**Latino/a/x role model:**

My parents – both the first in their families to go to college.

**What makes me Latino/a/x proud:**

Our amazing cultura! The music, food, people, stories-- our legacies!

**Personal Message:**

"A woman who writes has power, and a woman with power is feared." - Gloria Anzaldúa



Room D-203

To Book an Appointment

Phone: (626) 585-7273

Email: [personalcounseling@pasadena.edu](mailto:personalcounseling@pasadena.edu)

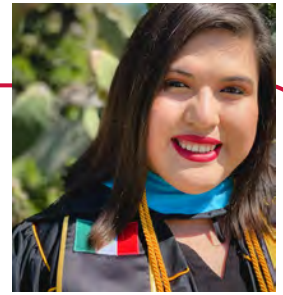
[pasadena.edu/campus-life/personal-counseling](https://pasadena.edu/campus-life/personal-counseling)

# Social Services Support

## Are you a student who...

- Is experiencing a personal, educational, psychological, or financial crisis?
- Is currently experiencing homelessness and would like information and resources about housing?
- Is experiencing domestic violence or feels unsafe in your environment?
- May be eligible interested in resources or community assistance and not know where to begin?
- May be eligible for public assistance programs based on low-income, your age, or a disability and need help navigating the services that may be available to you?

If you identified with any of the above examples, we've got good news for you - there is a Social Services Coordinator located in the Personal Counseling Department that is currently available to provide you with help and support!



**Gabriela Pérez**

**Department:** TRIO  
Upward Bound

**Identity:** Mexican-American

**Latino/a/x role model:** Gloria E. Anzaldúa

**What makes me Latino/a/x proud:**

What makes me proud to be Latinx is for sure the beautiful and rich culture and familial traditions. Growing up as a daughter of immigrants my parents always ensured I knew about my roots and that sense of community has truly been one of main motivations in my college career. Being the first in my family to receive a masters degree was an accomplishment that was done together in community, para mi raza y para mi familia. I love that sense of community within the Latinx culture and of course the delicious food and most importantly the resiliency that exists among mi gente.

**Personal Message:**

"I change myself, I change the world." - Gloria E. Anzaldúa

Phone: (626) 585-7273

Email: [sherrera26@pasadena.edu](mailto:sherrera26@pasadena.edu)

[pasadena.edu/campus-life/  
personal-counseling/social-  
services-support.php](https://pasadena.edu/campus-life/personal-counseling/social-services-support.php)



# Transportation Services

## The PCC Shuttle

Use the PCC Shuttle to travel between the Colorado, Foothill, Rosemead Campuses and the Allen Ave. Metro Gold Line Station.

The shuttle is free to current students and PCC Staff! A PCC Student or Staff LancerCard is required to board the shuttle at any location. Class schedules on paper or electronic device will only be accepted the first week of each semester. [Visit the LancerCard ID website](#) to learn more about obtaining your ID card.

## Stop Locations

### Main Colorado Campus

The north east side of the campus between parking lots 6 and 7.

### Foothill Campus (CEC)

The north end of Lot C.

### Metro L Line/Gold Line - Allen Ave. Station

Allen Ave. & Maple St.. Curbside in front of the station.

### Rosemead Campus



## Hours of Operation

The shuttle leaves every 15-30 minutes from each location.

**Monday - Thursday**  
**6:30 a.m. - 10:45 p.m.\***

**Friday**  
**6:30 a.m. - 5:45 p.m.\***

\* Shuttle service is not available on weekends, holidays or when classes are not in session.



# Rosemead & Foothill Campus

## PCC at Rosemead

PCC at Rosemead is an educational satellite that offers general education credit courses leading to Degrees or Transfer, noncredit courses, and key student support services. As a student attending PCC at Rosemead, you will be a regularly enrolled PCC student with access to all PCC student services and the PCC Colorado Blvd. campus. Plus, the small, intimate setting of our center and courses, gives you easy access to faculty members and allows you to better get to know your peers!

The courses and programs offered at the Rosemead site support students who wish to:

- ✓ Complete GE requirements for an AA or AS degree
- ✓ Prepare to transfer to a 4-year college or university
- ✓ Take ESL classes to learn the English language
- ✓ Complete requirements for a degree within 5 academic programs
- ✓ Current local high school students looking to enroll concurrently



4105 N. Rosemead Blvd.  
Rosemead, CA 91770

Phone: (626) 585-3333

Email: [rosemead@pasadena.edu](mailto:rosemead@pasadena.edu)  
[pasadena.edu/rosemead](http://pasadena.edu/rosemead)

## History

Pasadena City College established an educational site in the City of Rosemead in October 2013, or PCC at Rosemead in an effort to continue its commitment to “providing access to higher education for members of the diverse communities within the District service area”.

# Rosemead & Foothill Campus

## Academic Programs

You can complete the majority of your general requirement courses leading towards an Associate in Arts or Science degree at PCC Rosemead. Also, PCC at Rosemead currently offers courses leading to program completion in five academic programs:

- Business (AA)
- Business Administration (AA-T)
- Humanities (AA)
- Social and Behavioral Sciences (AA)
- Sociology (AA-T)

### Choose from over 120 Introductory Courses!

During a full semester term (Fall, Spring), PCC at Rosemead offers over 120 introductory courses in over 20 disciplines. You can expect course offerings to include Accounting, Anatomy, Anthropology, Art History, Business, Economics, English, Math, Geography, Philosophy, History, Humanities, Languages, Psychology, Sociology, Speech, and Statistics.

### Special Programs

- High School Concurrent Enrollment
- ESL Non-Credit Courses
- First Year Learning Community
- Student Advisory Committee
- Informational Workshops



3035 E. Foothill Blvd.  
Pasadena, CA 91107  
Phone: (626) 585-3000  
[pasadena.edu/academics/  
divisions/noncredit](https://pasadena.edu/academics/divisions/noncredit)

## Foothill Campus (Community Education Center)

PCC's Foothill Campus (formerly the CEC) is a satellite campus. It houses the Noncredit Division which offers vocational, technical, and academic courses. Additionally, the Foothill campus houses the Cosmetology credit program and many of the Health Sciences credit programs, including Nursing, Medical Assisting, and Radiologic Technology.

# Dual Enrollment

Get ahead by completing high school and college credits at the same time! Explore career and majors before enrolling full time in college. Get an early introduction to college and make your transition from high school to college a lot easier.

## What are the benefits of participating in dual enrollment?

### Academic

- Complete high school and college credits at the same time.
- Ease their transition to college and enhance their chances of success.
- Address skill gaps and improve study skills and academic knowledge before becoming full-time college students.
- Be better prepared for college-level english and math.

### Career

- Explore various careers and majors options before entering college.
- Learn to make decisions about their college major and career.
- Understand the education and credentials needed for their chosen career.

### Personal

- Have access to peer mentors, work-experience education, internships, and more.
- Save time and money.



Email: [dualenrollment@pasadena.edu](mailto:dualenrollment@pasadena.edu)  
[pasadena.edu/academics/pre-college-programs/dual-enrollment](https://pasadena.edu/academics/pre-college-programs/dual-enrollment)

PCC is working closely with its partner districts to ensure that high school students have access to college-level courses. Dual Enrollment components include:

1. College and Career Exploration Courses
2. AA and ADT Required Courses: High school partners can work with PCC to choose courses that are required for the completion of Associate of Arts degrees and Associate of Art/ Science Degrees in Transfer
3. IGETC Courses: High school partners can work with PCC to choose courses that are required for admission to a University of California or California State University.
4. Career Pathway courses: A high school can also choose courses that lead to Career and Technical Education certificates.

## Participating School Districts

- Pasadena Unified School District
- Temple City Unified School District



# Community Resources

## Immigrants Rising

[immigrantsrising.org](http://immigrantsrising.org)

This organization empowers undocumented young people to achieve educational and career goals through personal, institutional and policy transformation.

## Jovenes, Inc.

[jovenesinc.org](http://jovenesinc.org)

This organization supports homeless youth between the ages of 18 and 25, assists at-risk families, and provides rental subsidies for community college students who are experiencing homelessness.

## City of Pasadena: Housing and Career Services Department

[cityofpasadena.net/housing](http://cityofpasadena.net/housing)

The City of Pasadena Housing and Career Services Department is dedicated to providing affordable housing and community development opportunities for low and moderate income persons and employment resources to enhance and strengthen our community.

## Friends in Deed

[friendsindeedpas.org](http://friendsindeedpas.org)

Non-emergency food is available on the above days to low-income/no income people regardless of residency; must register at Friends in Deed House, show a valid ID for each member of the family, and show proof of income (if any). Clients may only come for food once a week. Emergency referrals accepted from faith-based and social service organizations for food on a daily basis.

## Friends Outside in Los Angeles County, Inc.

[friendsoutsidelac.org](http://friendsoutsidelac.org)

No Charge; Services to persons affected by incarceration, including inmates, released inmates, and their families/loved ones. Services include case management, employment assistance, support groups for families, emergency food and transportation assistance (as available), emotional support, information about the criminal justice system, annual holiday party for children, resource referrals, alternative sentencing, jail visits and family communications support.

## U-PASS (Office of Student Life)

[pasadena.edu/campus-life/student-life/u-pass.php](http://pasadena.edu/campus-life/student-life/u-pass.php)

Save time and money with the U-PASS at PCC! As a PCC Student, you have the opportunity to purchase a U-PASS at a reduced rate. With a U-PASS at PCC, you will have access to unlimited rides on the Metro Bus and Rail, Foothill Transit, and Pasadena Transit, as well as Santa Monica's Big Blue Bus, for the entire semester

## Aspires West Pasadena

[aspirewestpasadena.com](http://aspirewestpasadena.com)

The Aspires Program seeks to guide young people through the critical stages of their lives. Mentors assist through tutoring, sharing employment skills, training, and counseling. Other areas include parenting and Kid's Law.



# Community Resources

## PCC Child Development Center

[pasadena.edu/cdc](http://pasadena.edu/cdc)

The PCC Child Development Center serves both students and staff of Pasadena City College, as well as the greater community. We provide education and care for children, ages 4 months through 5 years old and work directly with the goals and objectives of the College. Additionally, we serve as a laboratory school in support of the students in the various education and health programs at PCC.

## Flintridge Center

[flintridge.org](http://flintridge.org)

Wide range of after-school programs for high school-age youth to boost academic achievement, foster job and life skills and promote artistic expression and exploration. Activities include: tutoring, SAT and CAHSEE prep, computer training, digital photography and graphic design, personal health and self-esteem, cooking, yoga, art, performance, and leadership and job training.

## Community Health Alliance of Pasadena (C.H.A.P.)

[chapcare.org](http://chapcare.org)

Clinic sliding fee scale. Private insurance, Medi-Cal, Medicare and Denti-Cal accepted. Some services available at no cost to eligible patients providing proof of income. Primary medical and dental care. Medical care includes physical exams for children and adults, immunizations and TB testing, diabetes and hypertension care/management, and on-site x-ray services. Dental care includes routine cleanings, fillings, extractions and restorative work.

For additional support services visit:  
[pasadena.edu/campus-life/here2help-resource-guide](http://pasadena.edu/campus-life/here2help-resource-guide)



**Carlos "Tito" Altamirano**

**Department:**  
Counseling,  
College 1

**Identity:** Mexican-American/Latino

**Latino/a/x role model:** Emiliano Zapata

**What makes me Latino/a/x proud:**

The genuine love of our culture and each other. Our fight for social justice and desire for all to be successful.

**Personal Message:**

My late uncle, upon my graduation from my Master's Degree, pulled me aside, gave me a card, and walked away. I immediately opened it. Inside I found \$100, but more importantly, I found the words that I'd carry with me in my work in education. He simply wrote that he was proud of me and that we, as Latinos, "nosotros no somos de los de abajo, si no de los de arriba." We aren't people from the bottom; rather, we are people from the most high". For someone, who like my father, came from a rural background in Mexico, not finishing higher than 3rd grade, this meant a lot to me and how I choose to help our students, reminding them that they're worth being helped.

# Latina/o/x Websites & Resources

[Latinos in the Film Industry - NALIP web site](#)

[National Council of La Raza - NCLR](#)

[Mexican American Legal Defense and Education Fund - MALDEF](#)

[Saludos.com Job and Career Resource](#)

[Spanish Language Web sites and Resources](#)

[Recommended U.S. Latino Web Sites by Susan Garcia](#)

[Hispanic Resources Network](#)

[Smithsonian Education Resources](#)

[Genealogy Research Hispanic Resource](#)

[Latin American Network Information Center](#)

[United States Hispanic Chamber of Commerce](#)

[Hispanic Web site Guide - Good for Surfing](#)

[National Society for Hispanic Professionals](#)

[Hispanic Scholarship Fund](#)

[Hispanic Organization of Latin Actors](#)

[Hispanic National Bar Association](#)

[Hispanic Association on Corporate Responsibility](#)

[Hispanic Association of Colleges and Universities](#)

[Hispanic American Police Command Officers Association](#)

[Hispanas Organized for Political Equality](#)

[Congressional Hispanic Caucus Institute](#)

[American GI Forum of the United States - California Chapter](#)

[National Association of Hispanic Journalists](#)



**Yvonne  
Sandoval**

**Department:**  
College 1

**Identity:**  
Mexican-  
American

**Latino/a/x role model:** Juan  
Gabriel

**What makes me Latino/a/x proud:**  
Mi gente, comida, y cultura

**Personal Message:**  
"Do work that matters. Vale la  
pena." - Gloria Anzaldua

# Latina/o/x Websites & Resources

[National Association of Hispanic Federal Executives](#)

[National Alliance for Hispanic Health](#)

[MANA: A National Latina Organization](#)

[League of United Latin American Citizens--LULAC](#)

[Latin Business Association](#)

[Labor Council for Latin American Advancement](#)

[Inter-University Program for Latino Research](#)

[Hispanic Women's Corporation](#)

[Society of Mexican American Engineers and Scientists](#)

[Society for Advancement of Chicanos and Native Americans in Science](#)

[Smithsonian Center for Latino Initiatives](#)

[SER-Jobs for Progress, Inc.](#)

[REFORMA](#)

[National Society of Hispanic MBAs](#)

[National Latino Peace Officers Association](#)

[National Latino Children's Institute](#)

[National Latina Institute for Reproductive Health](#)

[National Latina Health Network](#)

[National Hispanic Corporate Council](#)

[National Hispana Leadership Institute](#)

[National Association of Latino Elected and Appointed Officials](#)

[National Association of Hispanic Publications](#)

[National Association of Hispanic Nurses](#)

# Latina/o/x Books at PCC

## Non-Fiction

[Subtractive Schooling : U.S. - Mexican Youth and the Politics of Caring](#)

Angela Valenzuela

[The Cristal experiment: a Chicano struggle for community control](#)

Armando Navarro

[The New Latino Studies Reader: A Twenty-First-Century Perspective](#)

Ramon A. Gutierrez (Editor); Tomás Almaguer (Editor)

[Critical Race Counterstories Along the Chicana/Chicano Educational Pipeline](#)

Tara J. Yosso

## Fiction

[Afterlife](#)

Julia Alvarez

[Bang!](#)

Daniel Peña

[Dodger Blue Will Fill Your Soul](#)

Bryan Fierro

[Grieving for Guava](#)

Cecilia M. Fernandez

[Latin@ Rising An Anthology of Latin@ Science Fiction and Fantasy](#)

Matthew David Goodwin (Editor)

[Latino American Folktales](#)

Thomas A. Green (Editor)

[Ordinary Girls](#)

Jaquira Díaz

[Short Fiction by Hispanic Writers of the United States](#)

Nicolás Kanellos (Editor)

[Sofrito](#)

Phillippe Diederich

**Anthony M. Espinoza**

**Department:**  
Pathways FYE

**Identity:** Multiracial

**Latino/a/x role model:**

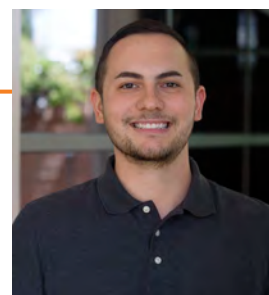
Definitely my father, he is the strongest and most selfless person I know. Not only did he inspire me to follow my dreams be the first in my family to pursue higher education, he supported me throughout my journey, and kept me motivated when things got tough. Words cannot express how influential and supportive he has been.

**What makes me Latino/a/x proud:**

The richness of the culture and closeness of the community makes me proud. In our household, family and community are so important, specifically, connecting over home cooked meals that have been passed down from generation to generation and seeing how hard our community works to uplift one another.

**Personal Message:**

Remember to lean on your support system, whoever that may consist of (chosen or biological family, friends, mentors). As students, we aren't in this journey alone, there are so many people out there that want to see you succeed!





# Latina/o/x Books at PCC

## Poetry

### Corazon

Yesika Salgado

### Hermosa

Yesika Salgado

### Looking Out, Looking in : Anthology of Latino Poetry

William Luis (Editor)

### Manteca! : An Anthology of Afro-Latin@ Poets

Melissa Castillo-Garsow (Editor)

### Tesoro

Yesika Salgado

### The Chicano/Latino Literary Prize : An Anthology of Prize-winning Fiction, Poetry, and Drama

Stefanie Fetta (Editor)

### Unaccompanied

Javier Zamora

#### **Danielle M. Rapue**

**Department:** Librarian

**Identity:** Xicana

#### **Latino/a/x role model:**

Dolores Huerta & my abuelita  
Concepcion Fernandez

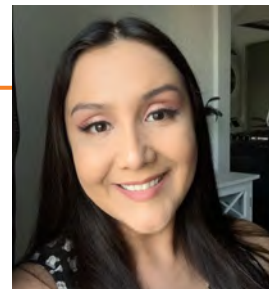
#### **What makes me Latino/a/x proud:**

I'm proud to be raised in a culture that deeply engrains in us the importance of family and supporting one another. Community and family are so important. From padrinos pulling together to pay for different parts of a Quince, or children taking on roles like translator for their parents, our values demonstrate a need to support the collective over one's own self.

#### **Personal Message:**

A piece of advice... do not allow the feeling of being othered or not being perceived as "Latino/a/x enough" stop you from learning about and embracing your culture.

My French last name and sound of my voice has confused others at times of how I fit into Xicana culture. What people meeting me don't see or know, is my mother immigrated from Mexico at 10. I am the first generation in my Mexican family to not work in "the fields" or agricultural labor. My mother's generation was pressured to assimilate, being raised in her household meant complex understandings of what it means to be Mexican American or Xicana. Do not let others gate keep the Xicano experience from you. Let go of worry of the way others perceive you, and dive into embracing and exploring your culture, whatever it may be.



# Contributors

**Alina María Valencia Mosquera**  
Student Advisory Equipo Member

**Anthony M. Espinoza**  
Success Coach

**Dr. Cristina Salazar-Ramos**  
Faculty

**Dr. Cynthia Olivio**  
Vice President of Student  
Support Services

**Danielle M. Rapue**  
Librarian

**Desiree Zuniga**  
Faculty/Counselor/Equipo Lead

**Elizabeth Contreras**  
Success Coach

**Emmanuel Gomez**  
Student Advisory Equipo Member

**Enith Reyes**  
Student Advisory Equipo Member

**Gilbert Rivera**  
Publications Supervisor

**Jimmy Ramirez**  
Student Advisory Equipo Member

**Margarita R. Rivera**  
Student Support Program/  
PASS Coordinator

**Mariana Aldam**  
Equipo Member

**Dr. Michaela J.L. Mares-Tamayo**  
Director of Student Equity

**Natalie Aguilar**  
Student Advisory Equipo Member

**Sofia Acevedo**  
Student Advisory Equipo Member

**Stephanie Cardenas**  
Student Advisory Equipo Member

**Tony Au**  
Graphic Designer

**Yvonne Sandoval**  
Faculty



**Valeria Plascencia**  
**Department:**  
Counseling, College 1  
**Identity:** Mexican-  
American  
**Latino/a/x role model:**

My Mother: Maria Socorro Martinez Plascencia

**What makes me Latino/a/x proud:**

Cooking the recipes and foods that bring our families and friends together.

**Personal Message:**

"Lo que no me mata me alimenta." - Frida Kahlo

"What doesn't kill me, nourishes me." - Frida Kahlo