



PCC PATHWAYS

STUDENT SUCCESS TEAM:
COACHING, COUNSELING, AND TUTORING

Goals

Describe...

1. Success coach

- recruitment, hiring, training, roles and supervising process

2. Counselor

- support and roles

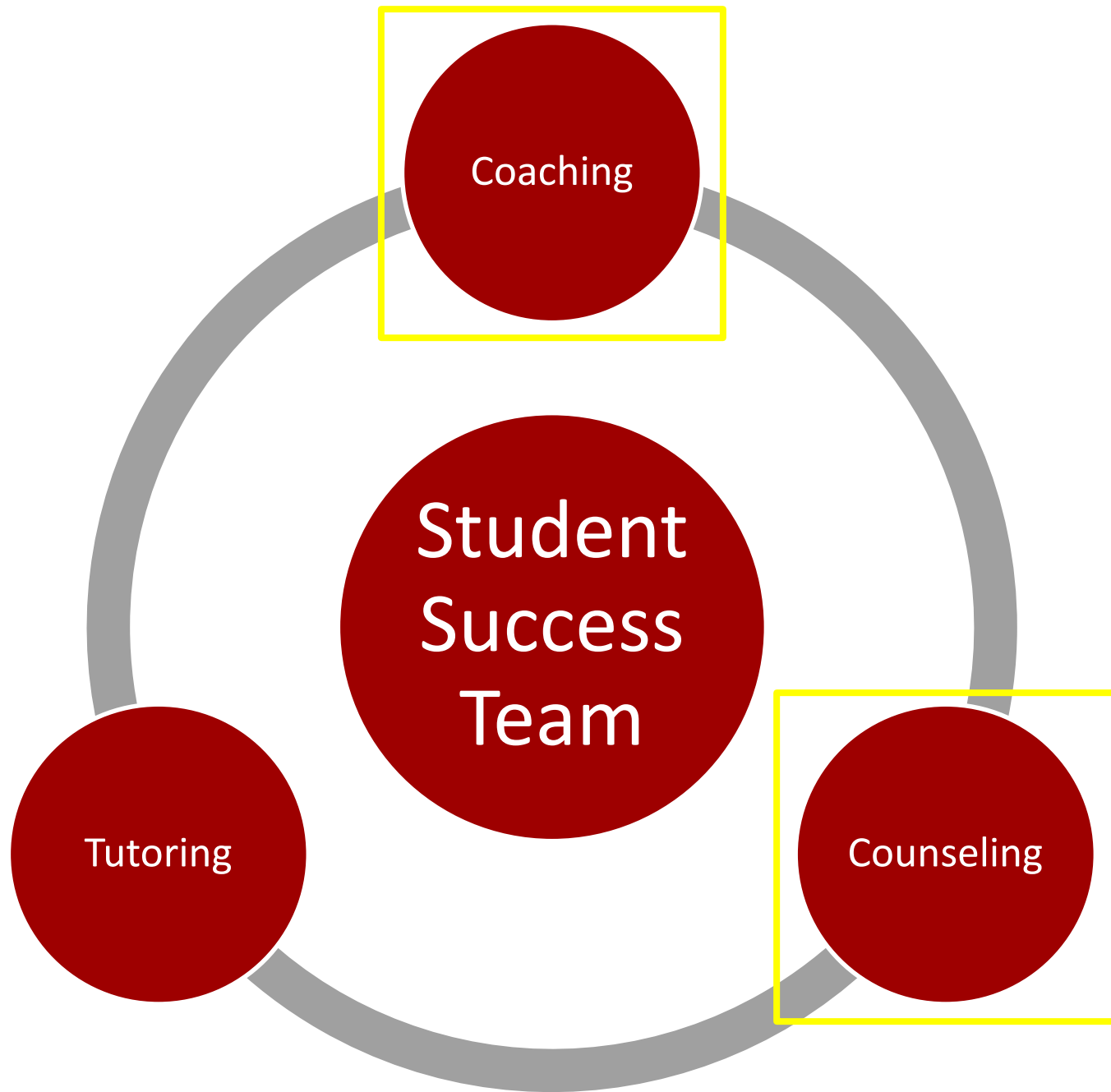
3. Tutor

- recruitment, hiring, training, roles and supervising process

Student Success Team

Think/Pair/Share

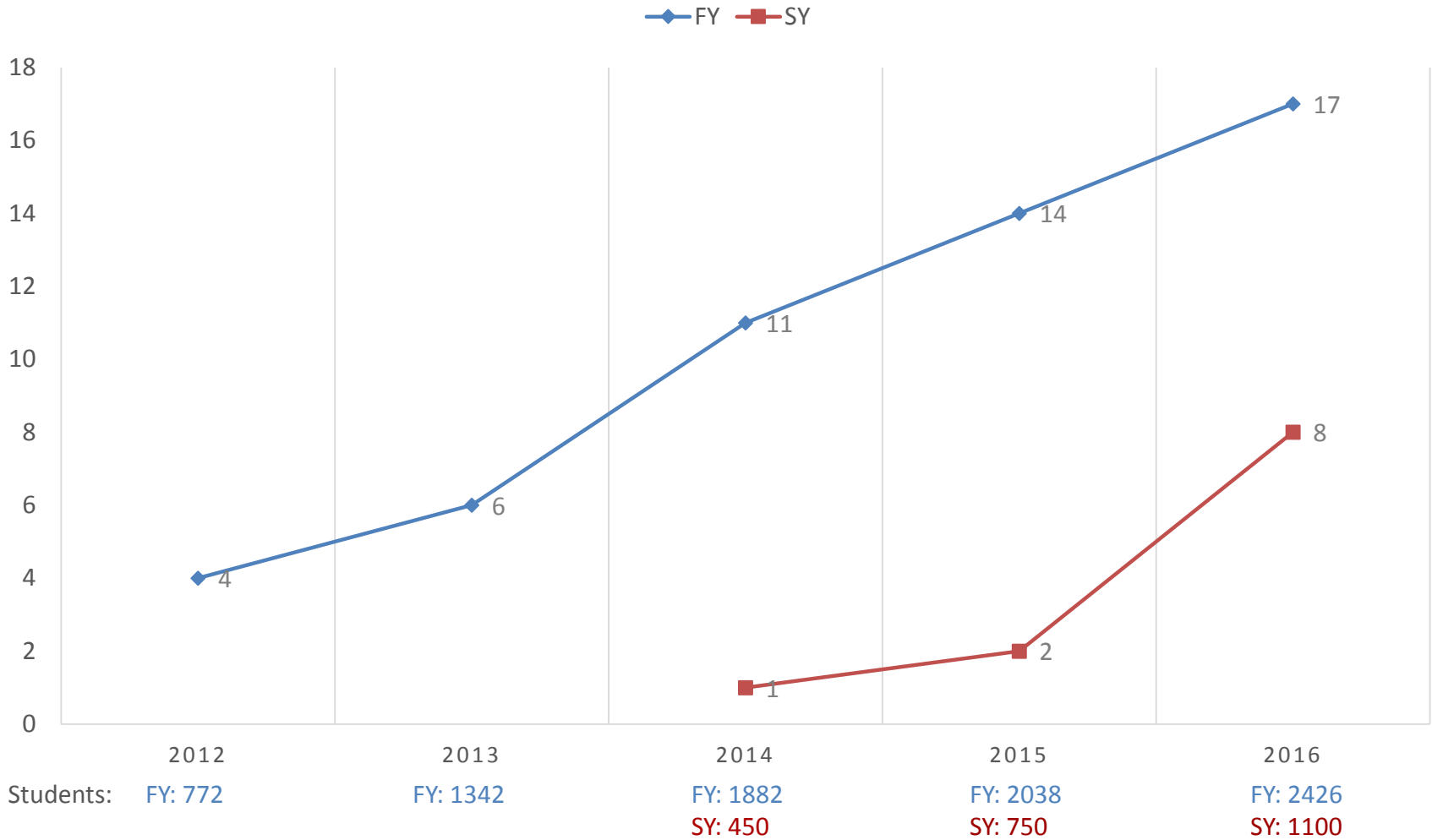
1. Identify what success team means to your college.
2. Define the goals of your success team.
3. Who (people, programs,...) already makes up your success team at your college/district?
4. What goals of your success team are already achieved by your college/district?



Coaching Outcomes

1. Students will engage in student life activities (Aligned with Pathways program outcome 1)
2. Students will utilize appropriate support services and resources to overcome barriers to academic success (Aligned with Pathways program outcome 2)

History of Coaching



Coach Leads:

1

3

2

2

Pathways Coach Breakdown

	First Year	Second Year
Athletes	2 (138 students)	
International	3 (380 students)	1 (172 students)
Ujima	3 (73 FY students / 43 SY students)	
XL	12 (1724 students)	6 (908 students)

What is a Coach?

- Paraprofessionals
- First line of support for Pathways students
- Caseloads \approx 160 students
- Hours \approx 20 hours



What is a Coach Lead?

- Full-time staff
- Provide lead direction to coaches
- Resource and advocate for coaches
- Organize schedules and weekly meetings
- Design, plan, and facilitate coach trainings
- Meet with students, as needed

Recruitment and Training

- Graduate students (Higher Ed, Counseling, Social Work)
- Summer training week (28 hours)
- Monthly professional follow-ups (4 hours)

How Coaches Provide Support

- One-on-one appointments with students
- Group meetings with students
- College One instructor support
 - Classroom visits
 - Early alert
- Tracking Pathways requirements
 - Database

Coach Roles

- Roles
 - Meet with students
 - Prepare/Refer to counseling and career
 - Intake forms
 - Track requirements
 - Update database
- Discussion Topics
 - Personal & Academic Goals
 - Academic progress
 - Transition to college
 - Life/school balance

FY Student Requirements

- Fall Semester
 - Personal meeting
 - Comprehensive Ed Plan
 - Social event
- Spring Semester
 - Personal meeting
 - Comprehensive Ed Plan (update)
 - Career event
 - Above & Beyond First Year



Strengths

- First point of contact
- Connection with the campus
- Conduit to resources
- Guidance towards planning
- Mentors
- Early alert

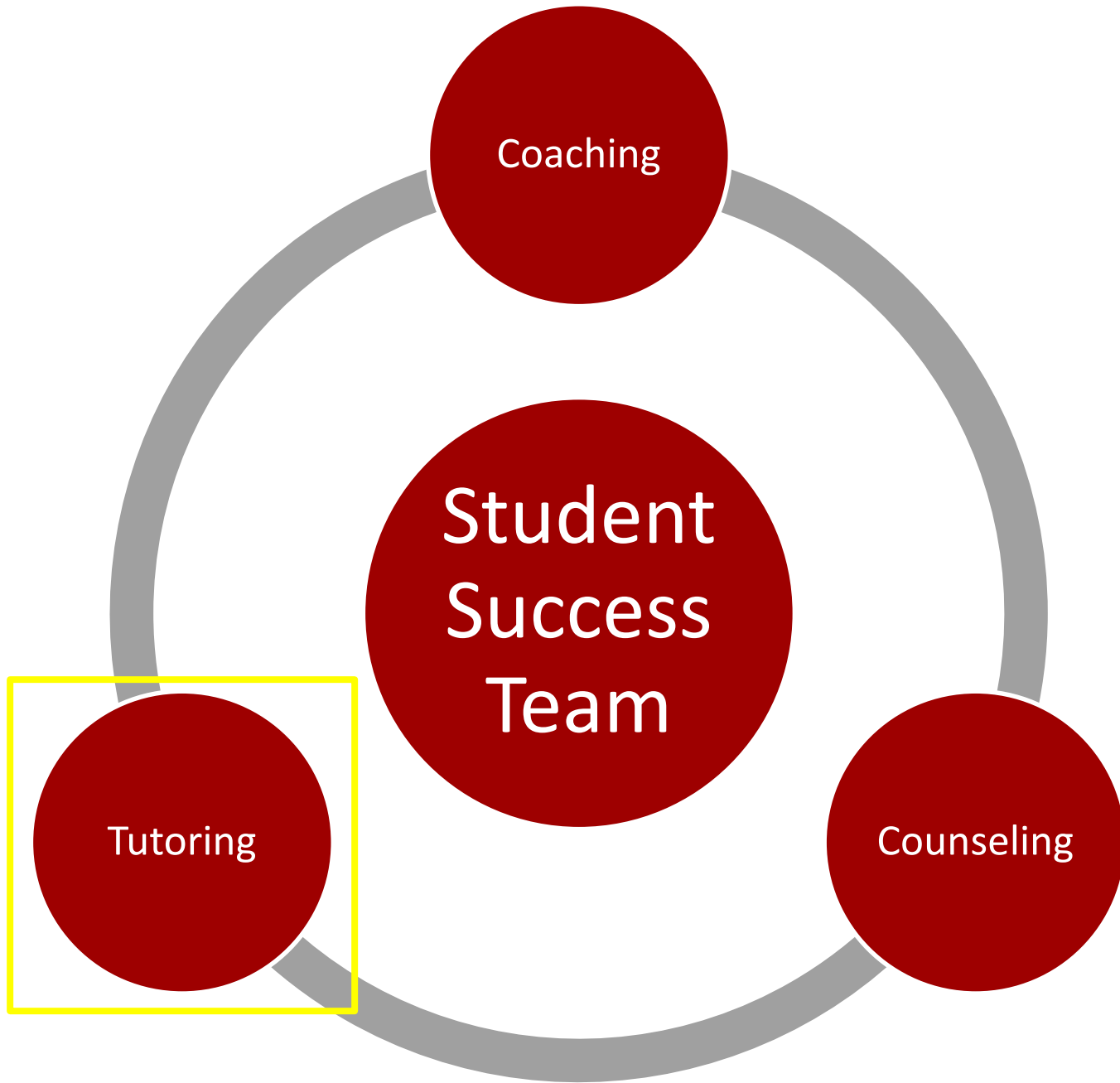


Challenges

- Reaching students
- Tracking progress
- Clearly defining role
- Maintain quality through caseload management

Reflection

What did you hear about coaching and/or counseling that you would like to see on your campus?



Coaching

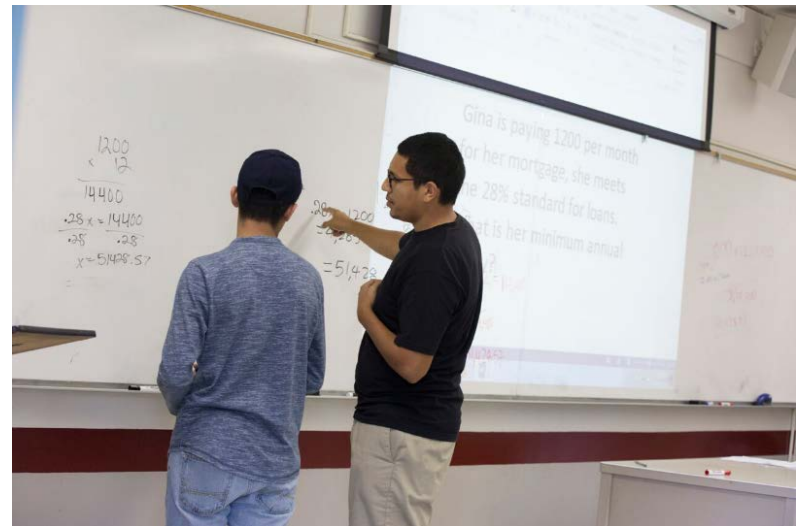
Student
Success
Team

Tutoring

Counseling

Tutoring Outcomes

1. Utilize tutoring services
2. Develop effective study skill habits



Tutoring

- Historical
 - Conexión created by students
- Structure
 - Tutors in areas
 - Math, English & ESL
 - 8a-5p coverage in the Pathways Center
 - Access to tutors
 - All Pathways Students
 - Walk-in basis

Tutoring

- Recruitment/Hiring
 - Minimum requirement of 'A' in subject desired to tutor
 - Former Pathways students
 - Completing SY requirements
 - 21 Tutors



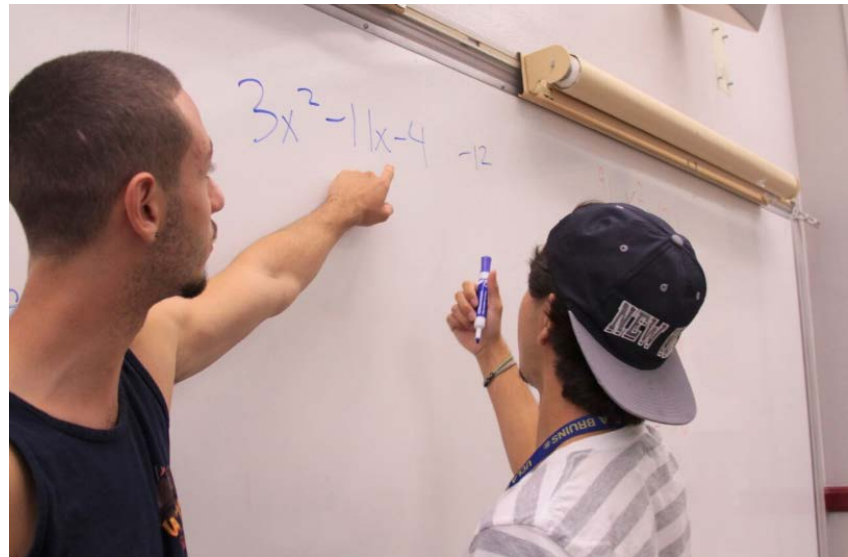
Tutor Training

- Academic Support Assistants
 - Begin second week with no training
 - Ten weeks of training (1hr face to face, online quizzes and online discussions)
- Pathways Training
 - Discuss Pathways Center specific needs



Tutoring Management

- Tracking/Assessment
 - Sign in sheets
 - Tutoring Log Cards
 - SSSP intake



Strengths

Multigenerational Tutors

- Former Pathways students (in second year)
 - Growth Mindset
 - Metacognition
- Connection to the program
- Mentors to new Pathways students

Challenges

- Consistency
 - Students transfer, need to continuously hire and train
- Funding



5'5"

5'5"

Lilia
Math



Hesi
Math



Melody
English



Tony
Math



Ana
Math



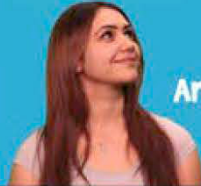
EDWIN
Math



Rachel
ESL / English



Anoush
English



Bryan
Math



Jose
ESL



George
Math



Taro
Math



Elena
Math



Karla
Math



Joaquin
Math



Chloe
ESL



Joseph
Math



Sherry
Math



Sako
Math



Santos
Math



Srey
Math



EDWIN
English



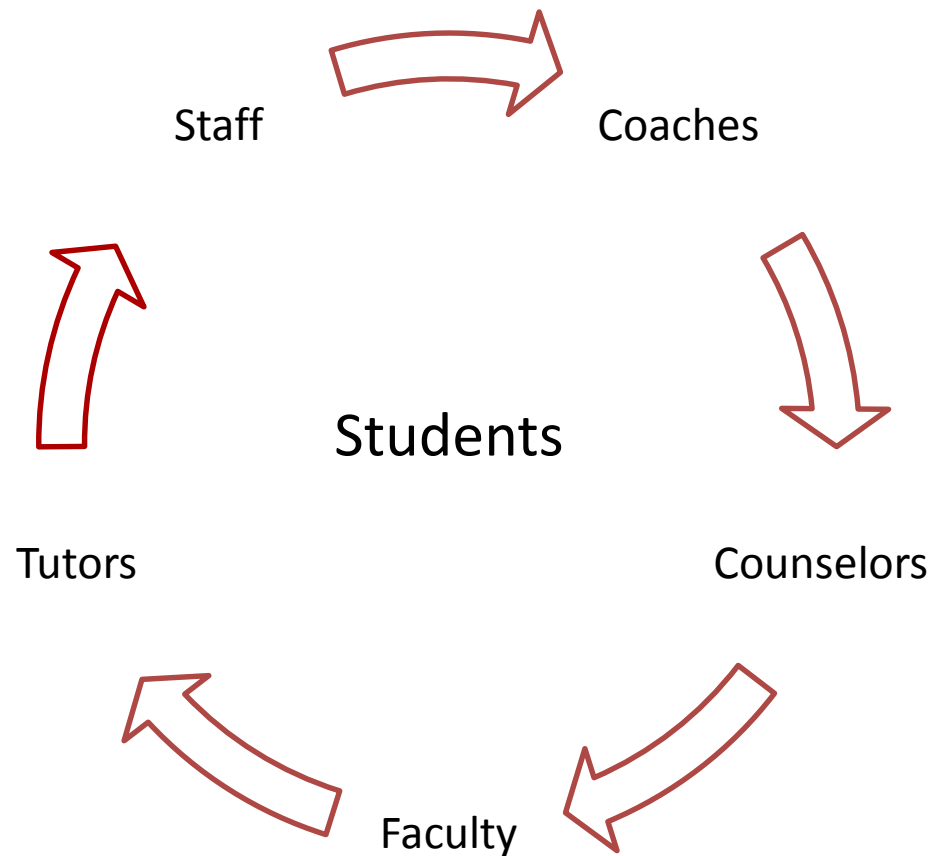
2'

2'

Reflection

What did you hear about tutoring that you would like to see on your campus?

Student Success Team Network



Questions??