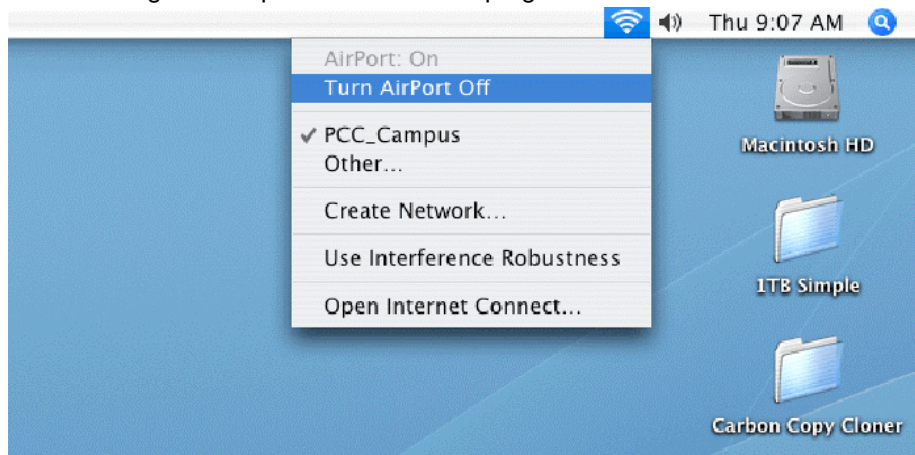
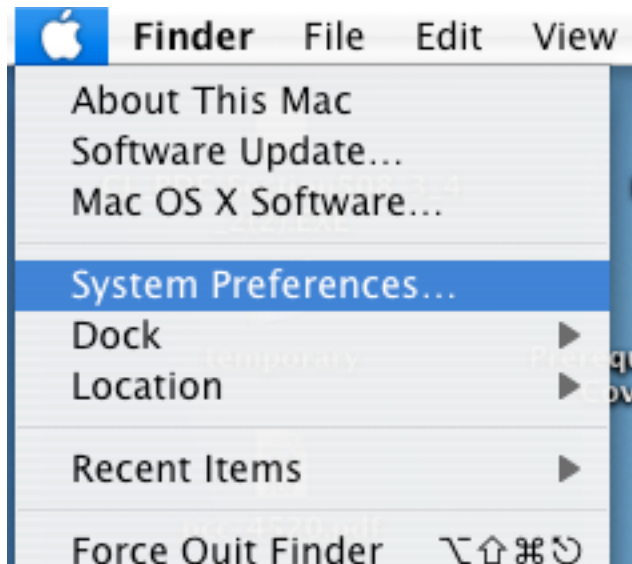


## Resetting Airport for Macs having difficulty accessing the PCC Wireless Network

1. Turn Airport off through the Airport menu at the top right of the screen.



2. Go to the apple menu at the top left of the screen and select the 4th selection, which is "System Preferences".



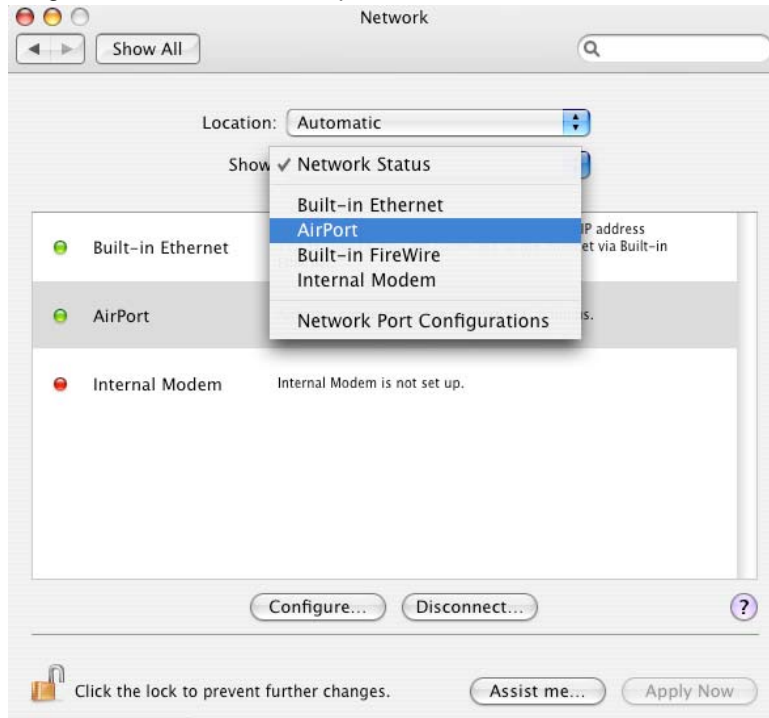
3. Now select “Network” located on the third row of icons in System Preferences.



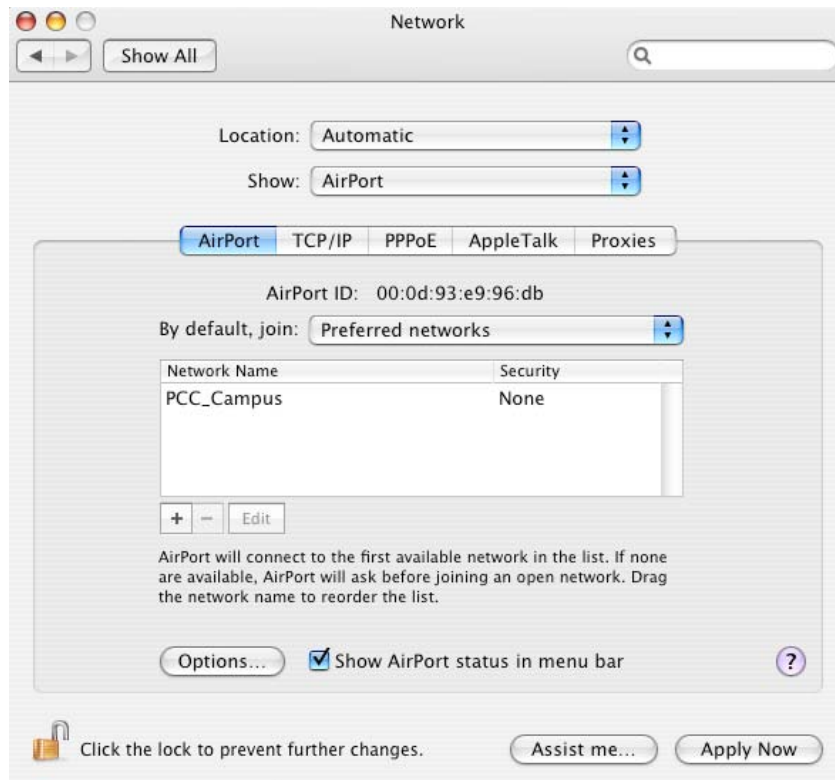
4. At this point a window like this will appear. As long as the top says “Network” we are okay. For location make sure it says “Automatic” or a special profile the user has made for PCC (name PCC WiFi for example). If it does not say “Automatic” click on field to the right of “Location:” and select “Automatic”.



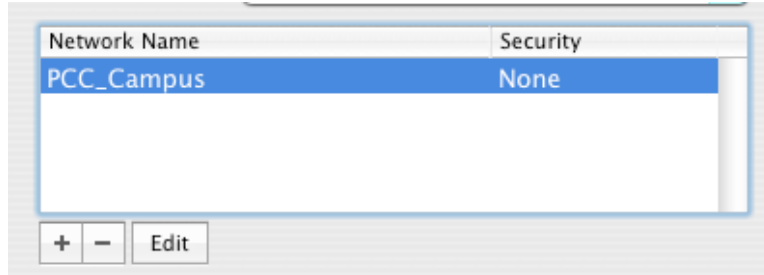
5. In the field to the right of “Show:” select “Airport.”



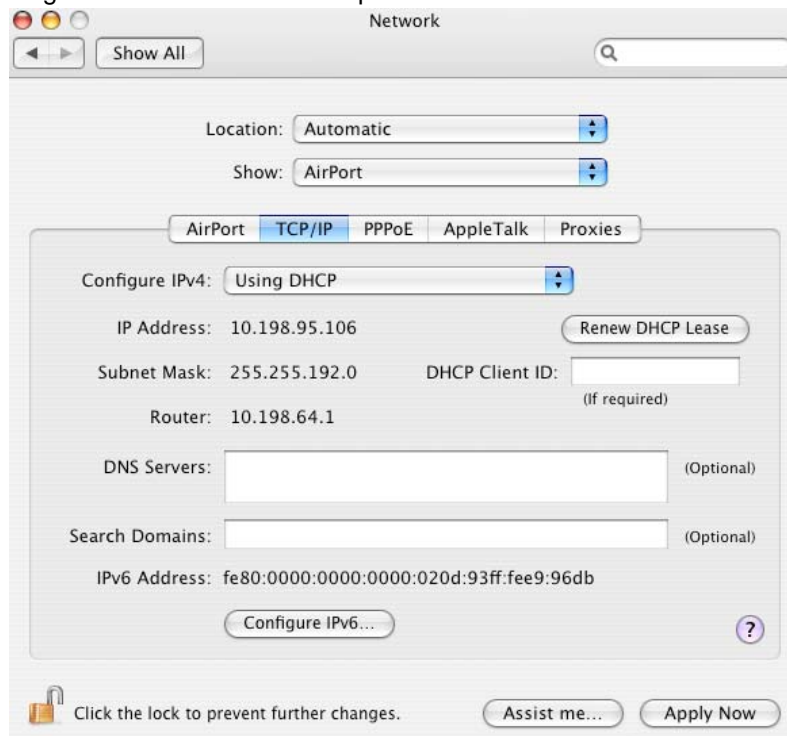
6. There will be a series of buttons labeled “Airport, TCP/IP, PPPoE, AppleTalk, and Proxies”. Make sure “Airport” is selected from these buttons and just below where it says “By default, join:” select “Preferred networks”



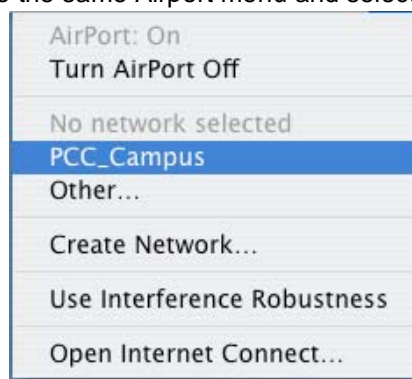
There will be at least one Network Name in this box called “PCC\_Campus” or “PCC WiFi”. Select it and click on the minus (-) sign below the box to remove it from the preferred networks list.



7. Now at the top click on the second of the five buttons mentioned earlier called “TCP/IP” and make “Configure IPv4:” says “Using DHCP”. Then press “Apply Now” at the bottom right and close this window by clicking on the red circle at the top left.



8. Now go to the Airport menu at the top right of the screen and “Turn Airport On”.
9. Wait 5 – 10 seconds and go to the same Airport menu and select PCC\_Campus.



10. Close and reopen Safari (or Firefox or whichever browser you are using) and the Internet should now work.