

CHAPTER 6

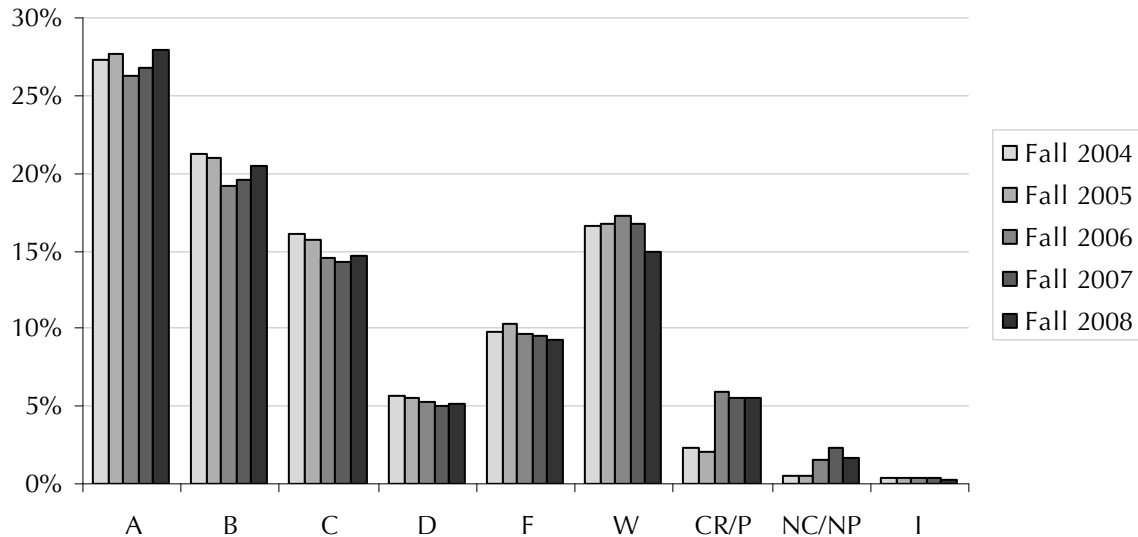
GRADES, SUCCESS, & RETENTION



Grade Distribution

For the past two Fall terms there has been a steady increase in the number of students receiving passing grades of A, B, C. This is up from a low in Fall 2006, where there was a substantial decline in the passing grades awarded. Additionally over the past three Fall terms there has been a steady decline in the of D, F and W (withdraw) grades assigned to students.

Figure 6-1
Grade Distribution

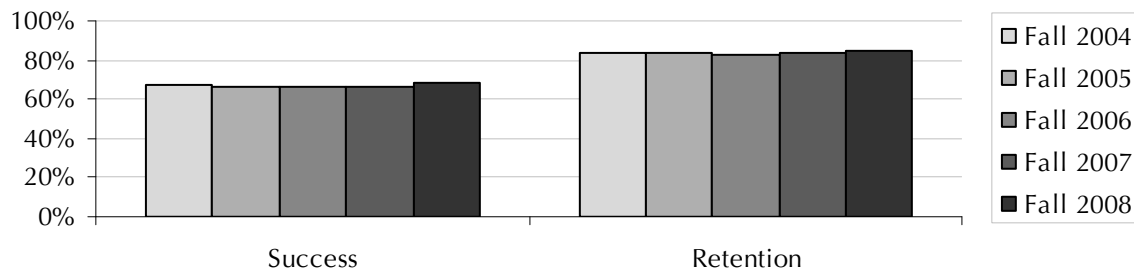


Two common indicators of student performance, which are used statewide, are success and retention rates. The success rate is the percentage of students who received an A, B, C, or CR/P upon completion of the term. The retention rate is the percentage of students who do not receive a W. Over the past four years, success rates have held fairly constant. Fall 2008 success rates have risen to just under 70%, while retention rates have remained basically constant at just over 80%.

$$\text{Success Rate} = \frac{\text{Number of Enrollments at Census Resulting in A, B, C, or CR/P}}{\text{Total Number of Enrollments at Census Resulting in A, B, C, D, F, CR/P, NC, I, W, or MW}} \times 100\%$$

$$\text{Retention Rate} = \frac{\text{Number of Enrollments at Census Resulting in Any Grade Other than W}}{\text{Total Number of Enrollments at Census Resulting in A, B, C, D, F, CR, NC/NP, I, W, or MW}} \times 100\%$$

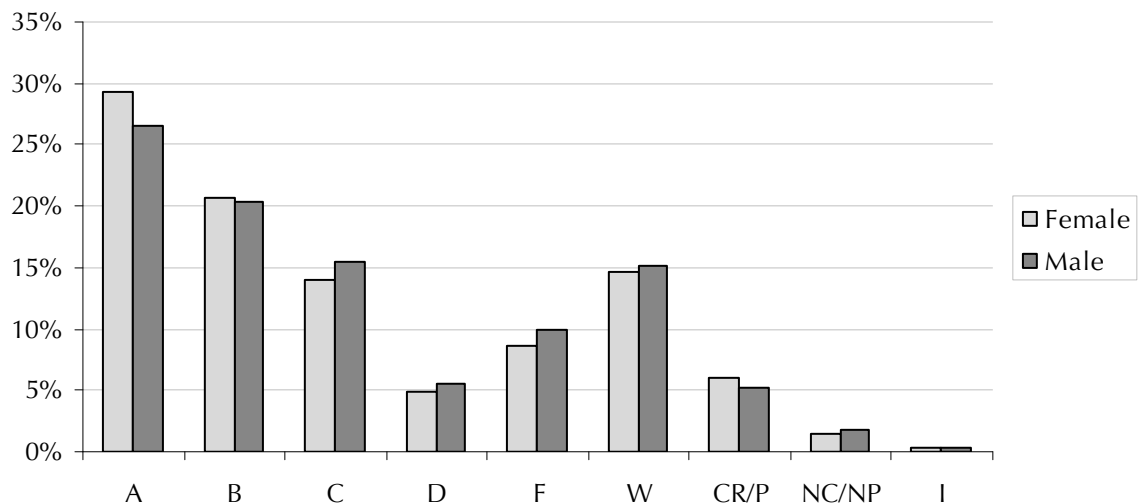
Figure 6-2
Success and Retention Rates

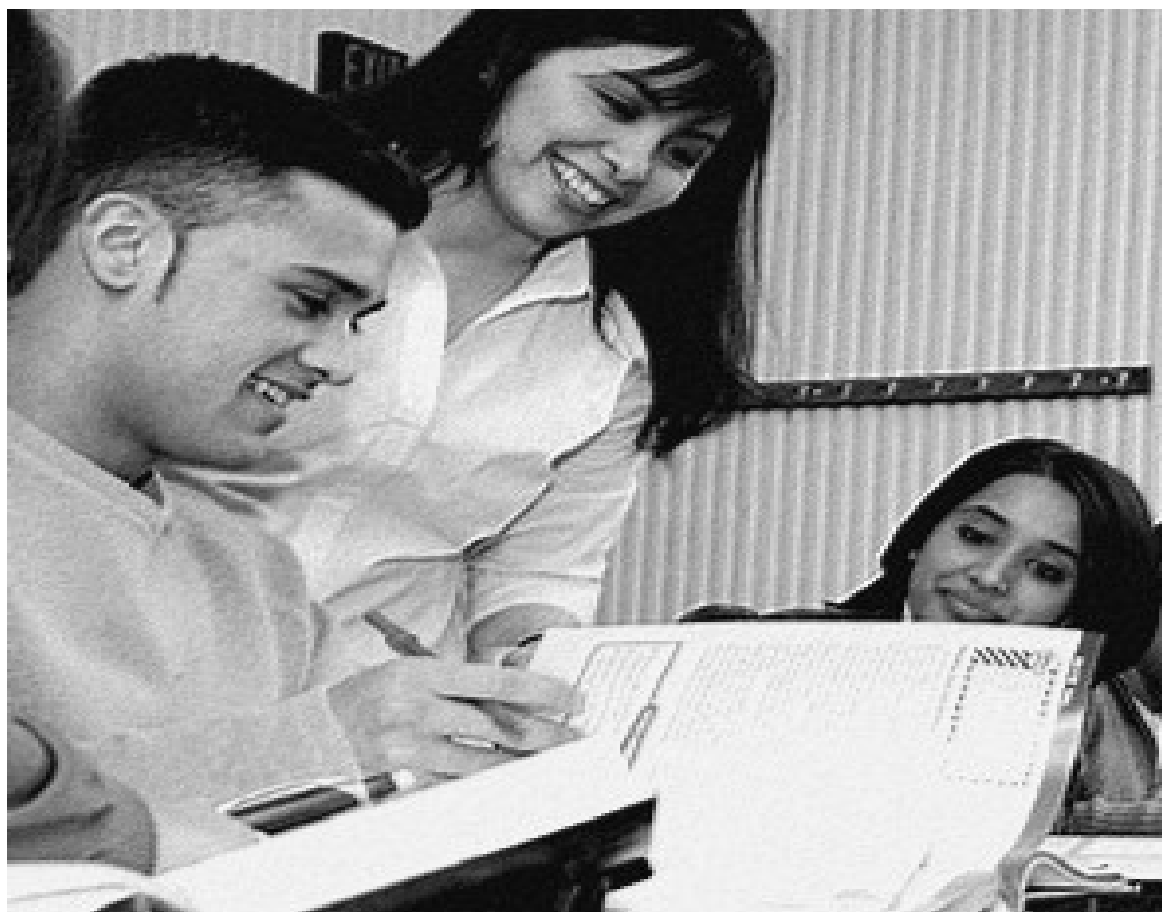


Gender

Female students receive proportionally more As, CR/Ps, and slightly more Bs than male students. Conversely, male students receive more Cs, Ds, Fs, and slightly more NC/NPs and Ws than female students. This has been a consistent pattern over the last few years at PCC and one that has been noted statewide in community colleges.

Figure 6-3
Fall 2008 Grade Distribution by Gender





Age

Older students tend to earn better grades. In Fall 2008, with each successive age group, proportionately more students earned A grades. Students under 20 years of age received proportionately more Cs, Ds, and Fs than any other age group. Figure 6-5 shows success and retention rates by age groups. Success rates were the lowest for students under 24 and the highest for students aged 35 to 39. Retention rates were the highest for those under 20 and were the lowest for students 25 to 29.

Figure 6-4
Fall 2008 Grades by
Age Group

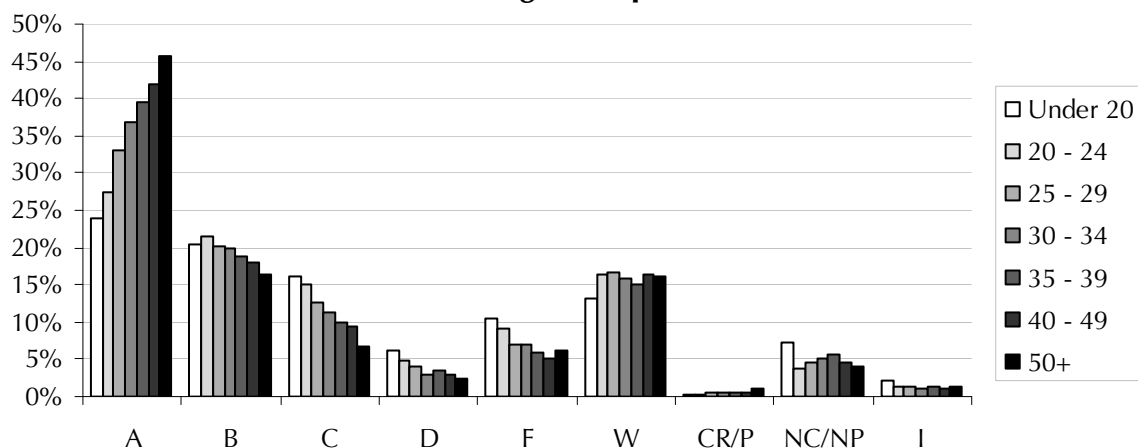
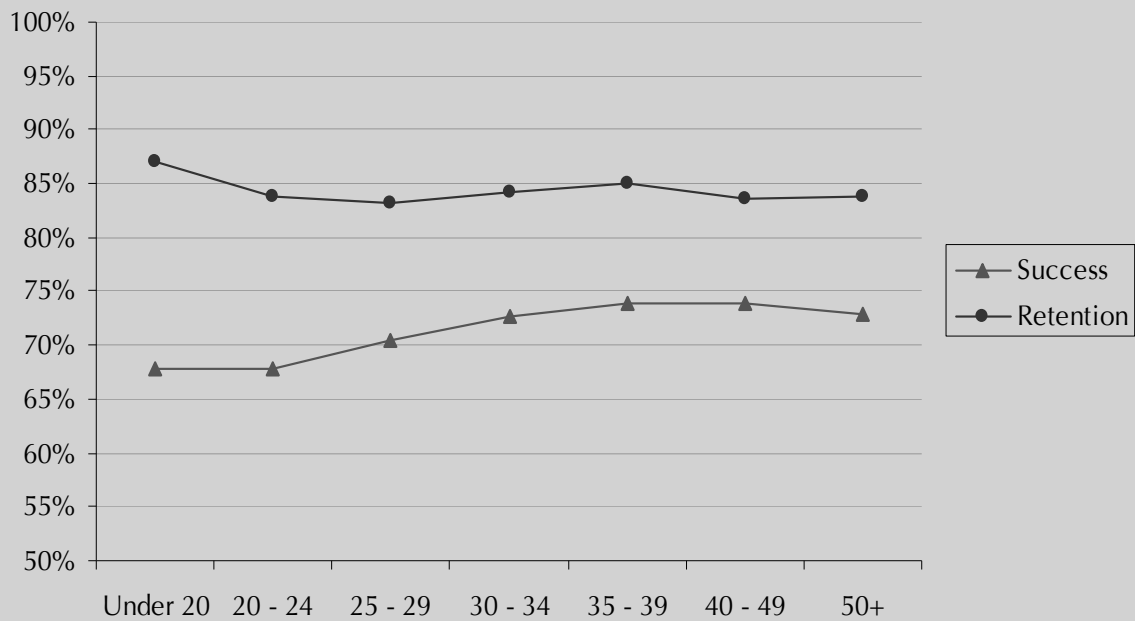


Figure 6-5
Fall 2008 Success and Retention by
Age Group



Ethnicity

In Fall 2008, as indicated in Figure 6-6, white students earned proportionally more As than any other group and African Americans earned proportionally less Bs than any other group. Asian/Pacific Islanders earn proportionally less Fs and Ws than all of the other groups.

Asian/Pacific Islanders and Whites have similar success and retention rates over the past five years as illustrated in Figure 6-7. In Fall 2008 Hispanic and African American students showed an increase in success and retention rates over the previous four Fall terms.

Figure 6-6
Fall 2008 Grade Distribution by
Ethnicity

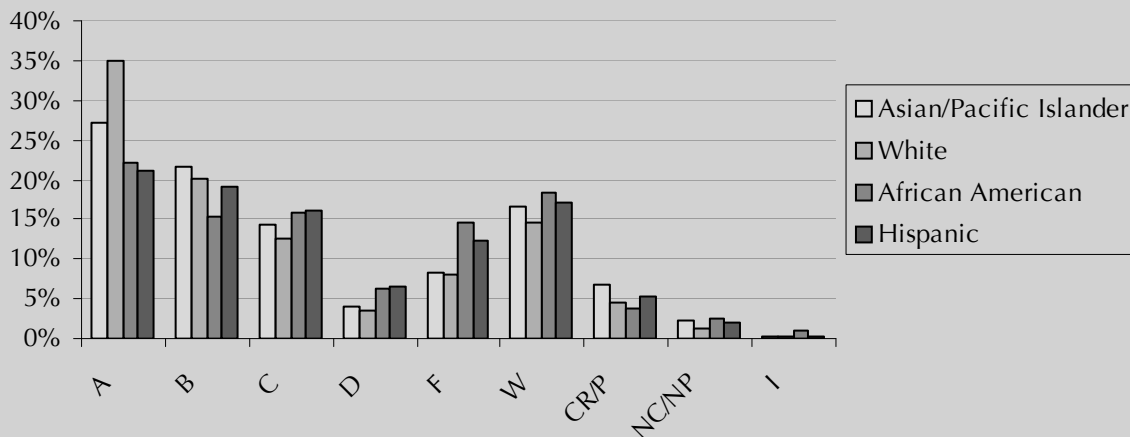
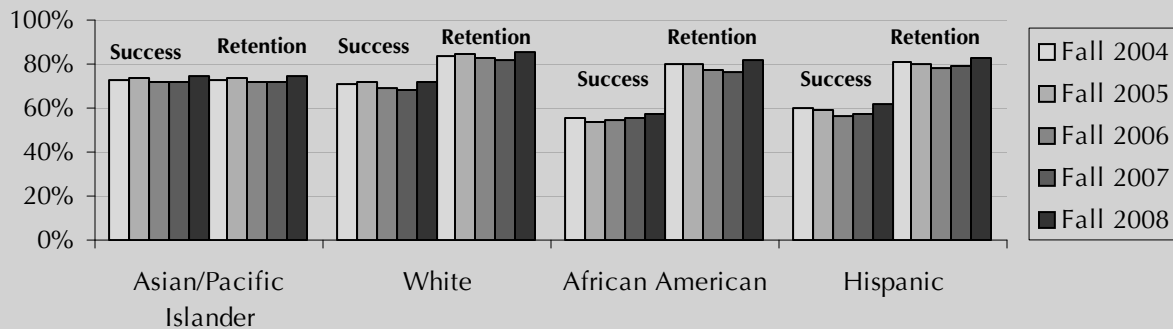


Figure 6-7
Success and Retention by
Ethnicity



Ethnicity

Table 6-1
Grade Distribution as a Percentage of
Ethnicity (African American & Asian/Pacific Islander)

		Fall 2004	Fall 2005	Fall 2006	Fall 2007	Fall 2008
African American						
	A	20.5	20.9	21.6	20.3	22.1
	B	16.5	16.1	14.5	16.0	15.5
	C	16.5	15.5	14.4	15.0	15.9
	D	7.4	6.6	5.7	5.9	6.4
	F	15.6	17.6	14.3	13.1	14.5
	W	20.0	20.4	21.5	21.6	18.4
	(F & W)	35.6	38.0	35.8	34.7	32.9
	CR/P	2.0	1.4	4.6	3.8	3.8
	NC/NP	0.8	0.8	2.3	3.6	2.5
	I	0.7	0.8	1.0	0.8	1.0
	Success	55.5	53.9	55.2	55.0	57.3
	Retention	80.0	79.6	78.5	78.4	81.6
Asian/Pacific Islander						
	A	31.6	32.0	31.0	31.2	31.5
	B	23.2	23.5	21.3	20.8	22.8
	C	15.8	15.4	14.0	14.5	14.1
	D	5.0	5.1	4.8	4.8	4.6
	F	6.5	6.9	6.4	6.4	6.0
	W	14.7	13.7	14.7	14.3	13.3
	(F & W)	21.2	20.6	21.2	20.7	19.3
	CR/P	2.4	2.5	6.5	6.1	6.2
	NC/NP	0.6	0.7	1.1	1.6	1.4
	I	0.2	0.2	0.3	0.3	0.1
	Success	73.0	73.5	72.7	72.6	74.6
	Retention	85.3	86.3	85.3	85.7	86.7

Table 6-2
Grade Distribution as a Percentage of
Ethnicity (Hispanic & White)

		Fall 2004	Fall 2005	Fall 2006	Fall 2007	Fall 2008
Hispanic						
	A	20.0	20.1	18.5	19.0	21.1
	B	20.2	19.7	17.7	18.1	19.1
	C	17.6	17.7	16.2	15.4	16.2
	D	7.1	6.7	6.4	5.7	6.4
	F	12.9	13.4	13.1	13.4	12.3
	W	19.2	19.6	20.1	19.2	17.2
	(F & W)	32.2	33.0	33.2	32.6	29.6
	CR/P	2.1	1.9	5.8	5.5	5.3
	NC/NP	0.4	0.4	2.0	3.2	1.9
	I	0.4	0.4	0.3	0.4	0.4
	Success	59.9	59.4	58.1	58.0	61.7
	Retention	80.8	80.4	79.9	80.8	82.8
White						
	A	34.7	36.0	32.8	33.2	34.9
	B	20.9	20.9	19.7	19.7	20.2
	C	13.6	12.7	12.8	11.7	12.6
	D	4.0	3.9	4.0	3.8	3.5
	F	7.9	8.0	7.9	8.2	8.0
	W	16.2	15.9	16.4	17.0	14.6
	(F & W)	24.1	23.8	24.3	25.3	22.6
	CR/P	2.0	1.7	4.6	4.5	4.6
	NC/NP	0.3	0.4	1.4	1.6	1.4
	I	0.3	0.5	0.5	0.5	0.3
	Success	71.2	71.4	69.9	69.0	72.2
	Retention	83.8	84.1	83.6	83.0	85.4

GPA

In the last five years, Asians/Pacific Islanders' average GPA has remained very steady at around 2.73, rising to 2.79 in Fall 2008. For white and Hispanic students, as well as the college as a whole, the GPA fluctuated over the last five years. For African American students, GPA has remained basically stable at 2.19 from Fall 2006 to Fall 2008. With the exception of African American students, it is worth noting that in Fall 2008, GPAs for the other three groups and the college as a whole increased over those of the previous years.

Figure 6-8
Average Student GPA by
Ethnicity

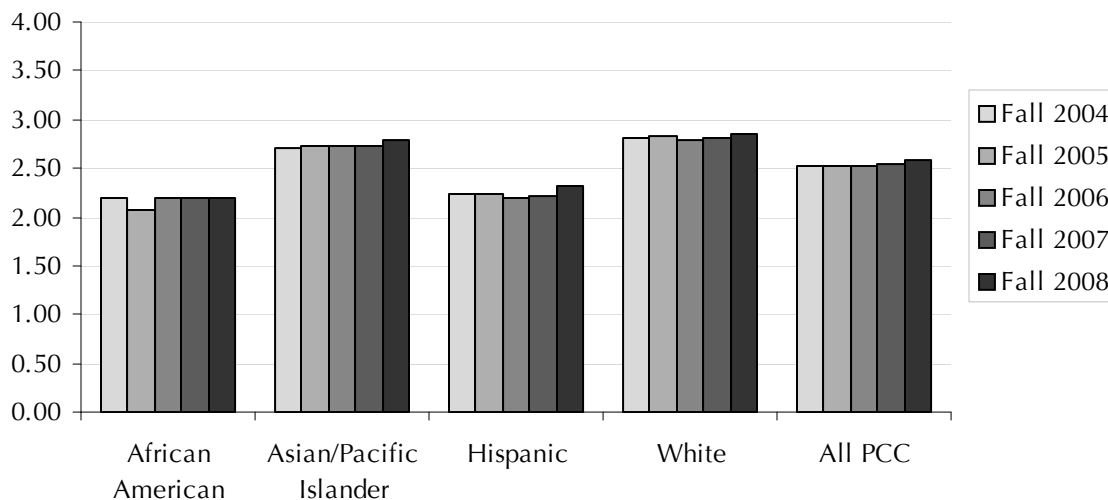


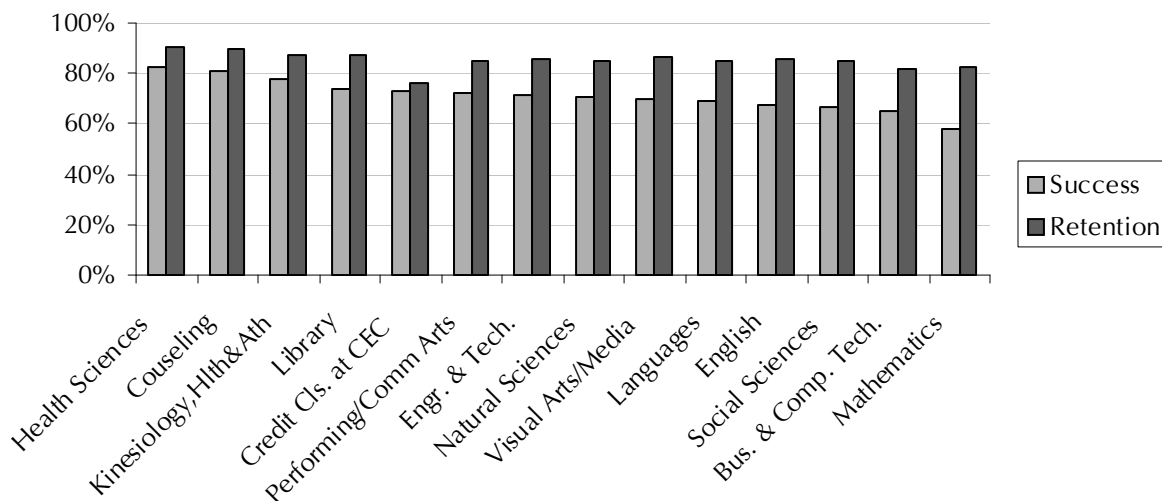
Table 6-3
Average Student GPA by
Ethnicity

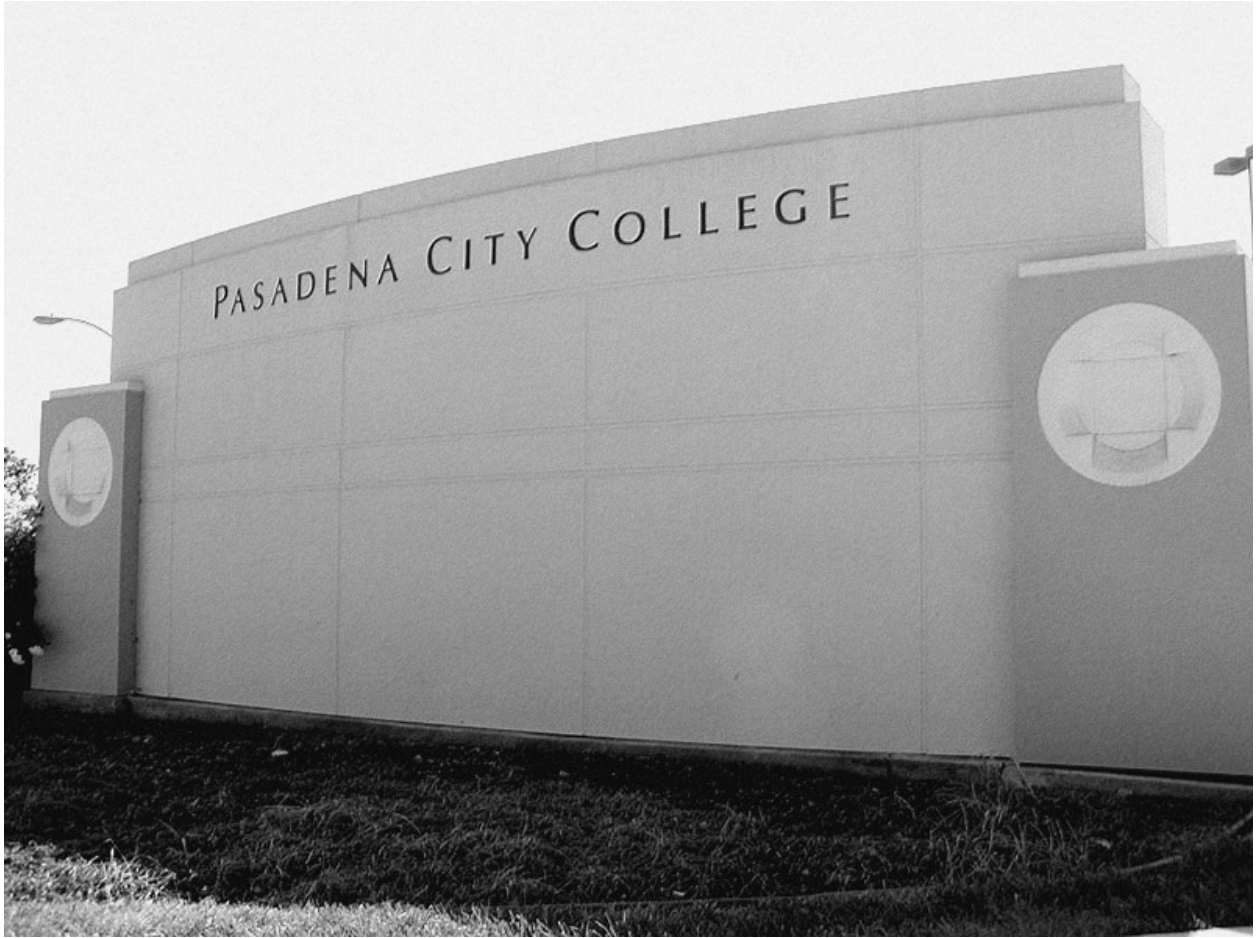
		Fall 2004	Fall 2005	Fall 2006	Fall 2007	Fall 2008
	<i>Average</i>					
	African American	2.20	2.07	2.19	2.19	2.19
	Asian/Pacific Islander	2.72	2.73	2.73	2.73	2.79
	Hispanic	2.24	2.23	2.19	2.22	2.32
	White	2.82	2.84	2.80	2.81	2.84
	All PCC	2.53	2.52	2.51	2.54	2.59

Division

The divisions in Figure 6-9 are sorted by descending success rate for Fall 2008. Health Sciences had the highest success rate at 83% and retention rate at 91%, while Mathematics had the lowest success rate at 58% and a retention rate of 82% in Fall 2008. Table 6-4 and Table 6-5 show the five-year success rates and retention rates, respectively, for all divisions. For the last three years, the success and retention rates for credit classes taught at CEC (Community Education Center) have been decreasing. Success rate for Performing and Communication Arts, Engineering and Technology, Natural Sciences, Languages, and Visual Arts/Media have been increasing over the past three years. Retention rates for English, Engineering and Technology, Languages, Library, Visual Arts/Media, Natural Science, Performing and Communication Arts increase over the past three years. For all of PCC success and retention rates have increased over the past three years. Note: in Fall 2008 Special Services classes were incorporated into division courses.

Figure 6-9
Fall 2008 Success and Retention by
Division





Division 

Table 6-4
Success Rate by
Division

		Fall 2004	Fall 2005	Fall 2006	Fall 2007	Fall 2008
	<i>Percent</i>					
	Health Sciences	85.6	83.5	82.1	78.2	82.6
	Counseling	77.2	80.9	81.4	79.0	81.0
	Kinesiology, Hlth&Ath	75.7	74.6	72.6	75.1	77.5
	Library	73.3	74.7	71.5	67.1	73.8
	Credit Cls. at CEC	80.5	82.0	81.1	77.4	73.3
	Performing/Comm Arts	69.8	70.9	68.4	70.9	72.3
	Engr. & Tech.	70.7	66.6	69.4	70.3	71.3
	Natural Sciences	68.9	66.8	67.6	69.1	71.0
	Visual Arts/Media	64.2	66.8	66.0	67.1	69.7
	Languages	67.8	68.0	65.4	67.8	69.0
	English	67.4	67.3	67.5	63.6	67.6
	Social Sciences	64.4	64.7	62.6	62.8	66.9
	Bus. & Comp. Tech.	66.2	64.1	66.0	67.0	64.9
	Mathematics	55.2	54.4	55.4	53.5	58.3
	<i>All PCC</i>	67.0	66.5	60.4	66.1	68.8

Table 6-5
Retention Rate by
Division

		Fall 2004	Fall 2005	Fall 2006	Fall 2007	Fall 2008
	<i>Percent</i>					
	Health Sciences	92.3	90.6	90.6	88.1	90.6
	Counseling	87.6	91.4	90.7	92.3	90.0
	Kinesiology, Hlth&Ath	84.0	85.7	82.3	84.2	87.6
	Library	88.8	85.5	82.3	85.1	87.5
	Visual Arts/Media	83.5	85.1	83.6	83.9	86.6
	Engr. & Tech.	85.9	84.4	83.8	85.0	85.7
	English	83.7	83.8	85.1	85.2	85.5
	Social Sciences	83.0	82.4	81.8	81.8	85.3
	Performing/Comm Arts	85.0	84.0	82.7	83.3	84.9
	Natural Sciences	82.6	81.7	82.1	82.8	84.9
	Languages	82.8	84.2	81.3	83.5	84.6
	Mathematics	78.1	79.0	79.3	80.0	82.4
	Bus. & Comp. Tech.	82.5	81.7	82.2	82.4	82.0
	Credit Cls. at CEC	82.2	92.8	89.2	86.1	75.8
	<i>All PCC</i>	83.3	83.2	82.7	83.3	85.1

Course Type

Credit courses can be divided into three mutually exclusive groups::

Classification I - Freshman and Sophomore level courses that generally correspond to university of senior college lower division courses. (Course digits: 1-99)

Classification II - Technical, semiprofessional or occupationally oriented or meet community college general education needs. (Course digits: 100-399)

Classification III - Non-degree applicable courses. Considered foundation building courses or Basic Skills (Course digits: 400-499)

In Fall 2008, proportionally more As and Ws were assigned to students in classification I. Proportionally more Bs, Cs, Ds, and Fs were assigned to students in classification III, Basic Skills. The overall success rate increased for students in classification I courses in Fall 2008. Success rates in classification III, basic skills courses, have been increasing for the last four Fall terms. In Fall 2008, retention rates for classification I, II, and III increased compared to the previous Fall term.

Figure 6-10
Fall 2008 Grade Distribution by
Course Type

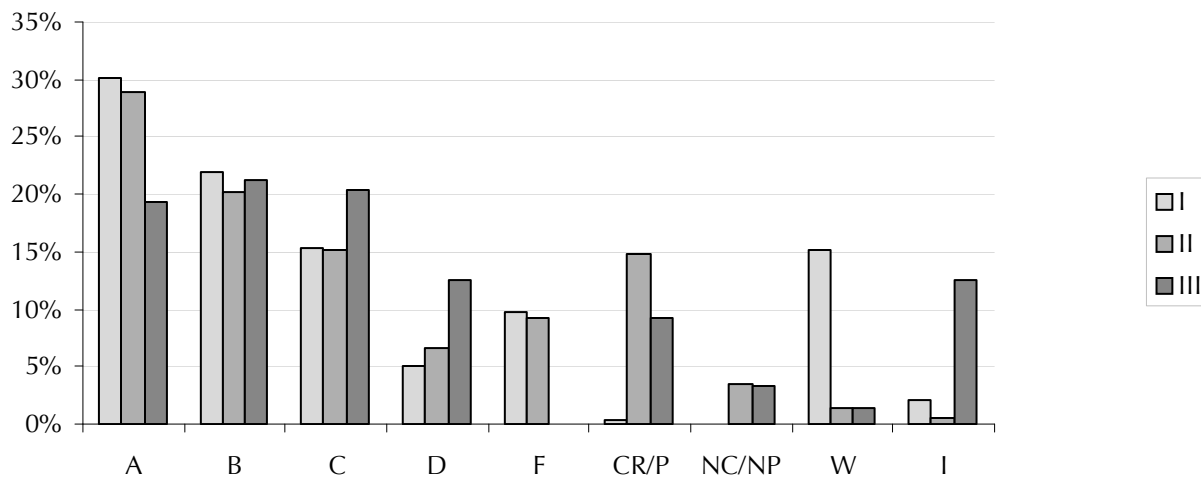


Figure 6-11
Success Rate by
Course Type

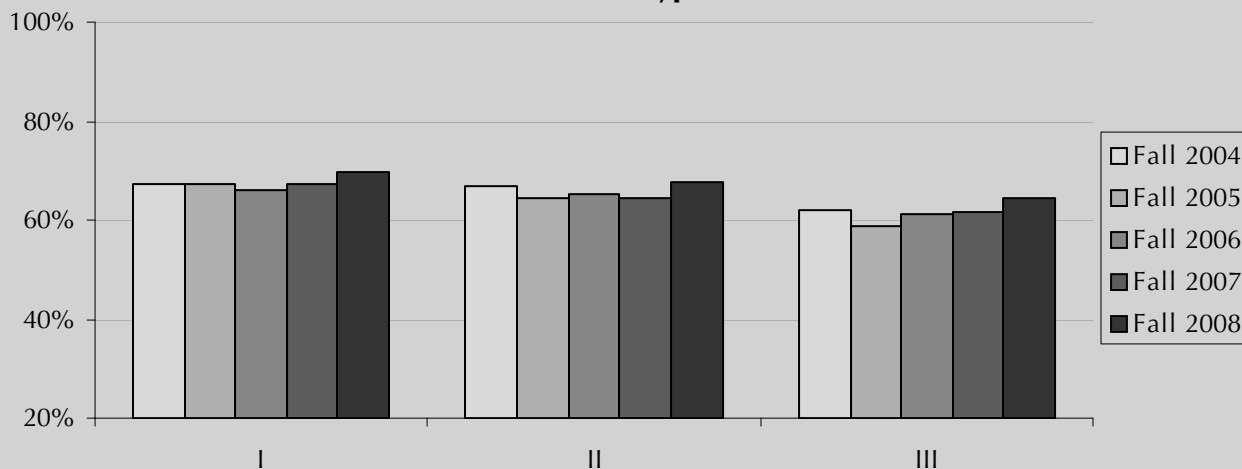
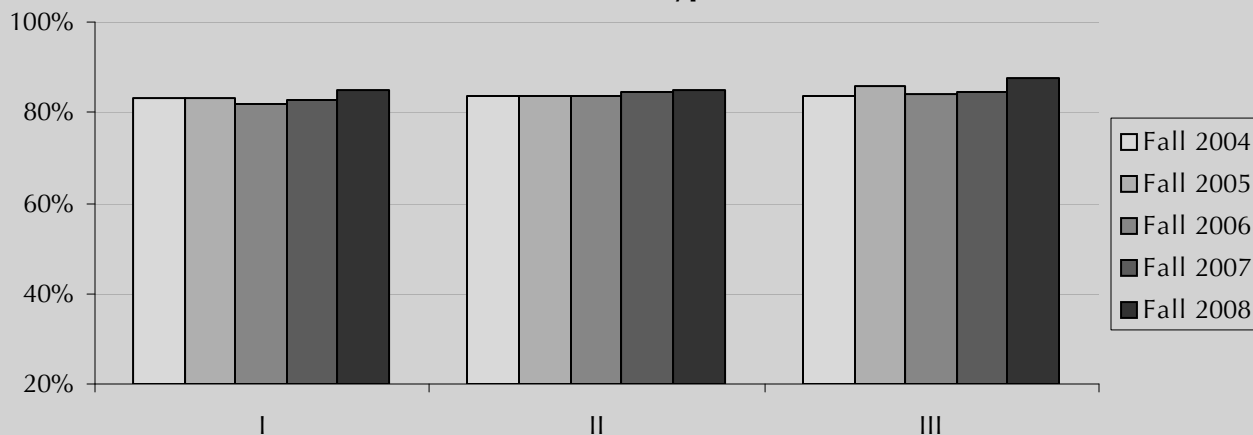


Figure 6-12
Retention Rate by
Course Type



Course Type

Tables 6-6, 6-7, and 6-8 show the grade distribution, success and retention of course Classifications I, II, and III, respectively, for Fall 2004 to Fall 2008.

Table 6-6
Percent of Grade Distribution
Classification I

		Fall 2004	Fall 2005	Fall 2006	Fall 2007	Fall 2008
<i>Percent</i>						
	A	28.3	28.5	28.4	29.2	30.2
	B	21.4	21.5	20.5	21.0	22.0
	C	16.1	15.7	15.3	15.0	15.3
	D	5.4	5.1	5.3	4.9	5.0
	F	10.0	9.8	10.0	9.8	9.7
	CR/P	1.5	1.7	1.9	2.2	2.1
	NC/NP	0.2	0.2	0.2	0.4	0.3
	W	16.8	17.0	18.0	17.3	15.1
	I	0.3	0.4	0.3	0.4	0.3
	Success	67.3	67.4	66.2	67.4	69.6
	Retention	83.2	83.0	82.0	82.7	84.9

Table 6-7
Percent of Grade Distribution for
Classification II

		Fall 2004	Fall 2005	Fall 2006	Fall 2007	Fall 2008
	<i>Percent</i>					
	A	25.8	26.8	27.5	26.8	28.8
	B	20.6	19.5	19.3	19.1	20.2
	C	15.3	15.2	15.2	15.3	15.2
	D	5.9	6.1	6.2	6.6	6.6
	F	9.2	11.3	10.5	11.1	9.2
	CR/P	5.1	2.8	3.1	3.3	3.5
	NC/NP	1.3	1.3	1.2	1.5	1.3
	W	16.3	16.4	16.3	15.5	14.9
	I	0.5	0.6	0.7	0.8	0.4
	Success	66.7	64.3	65.2	64.5	67.7
	Retention	83.7	83.6	83.7	84.5	85.1

Table 6-8
Percent of Grade Distribution for
Classification III

		Fall 2004	Fall 2005	Fall 2006	Fall 2007	Fall 2008
	<i>Percent</i>					
	A	15.5	15.7	17.1	18.9	19.3
	B	20.2	18.6	21.4	21.2	21.3
	C	19.0	18.9	18.1	18.8	20.4
	D	9.0	11.0	9.2	8.2	9.3
	F	10.0	13.2	11.6	13.2	12.5
	CR/P	7.4	5.6	4.5	2.8	3.2
	NC/NP	2.0	3.0	2.1	1.2	1.3
	W	16.5	14.0	15.9	15.7	12.5
	I	0.3	0.0	0.0	0.1	0.1
	Success	62.1	58.7	61.1	61.6	64.3
	Retention	83.5	86.0	84.1	84.3	87.5

Vocational Courses

Vocational courses are presented separately because they overlap with the three course types listed previously. Vocational courses are flagged by the California Community Colleges Management Information System (MIS) to indicate the degree to which a course is occupational in nature. The Student Accountability Model (SAM) codes are A (apprenticeship), B (advanced occupational), C (clearly occupational), D (possibly occupational), E (non-occupational), I (skill development), and X (other). In accordance with the Chancellor's Office definition, all courses with a SAM-code of A, B, or C are counted as vocational, although PCC does not offer any courses with a SAM-code of A.

In Fall 2008, proportionally students receive more As, Bs, and Ws than any other grade in vocational courses. Success and retention rates both increased slightly in Fall 2008 compared to those in the previous year.

Figure 6-13
Fall 2008 Grade Distribution of
Vocational Courses

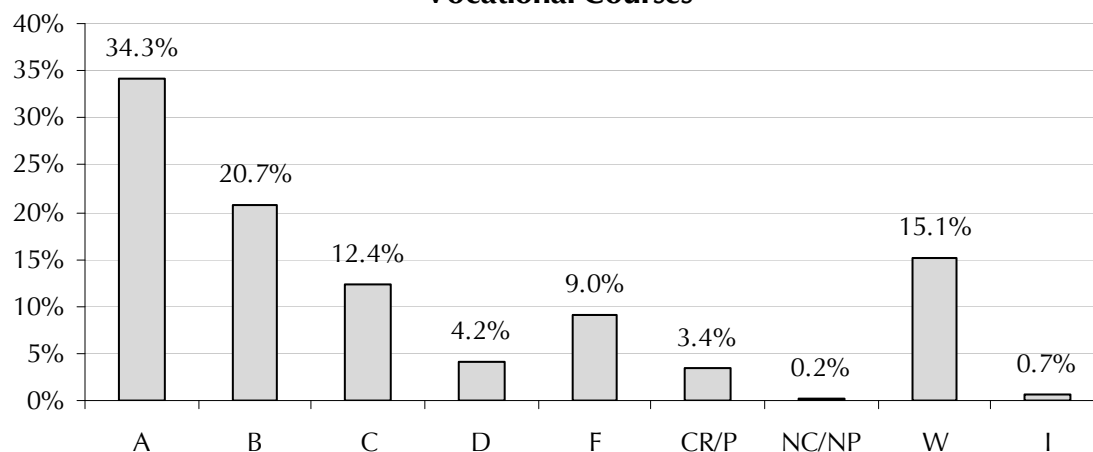


Figure 6-14
Success and Retention by
Vocational Courses

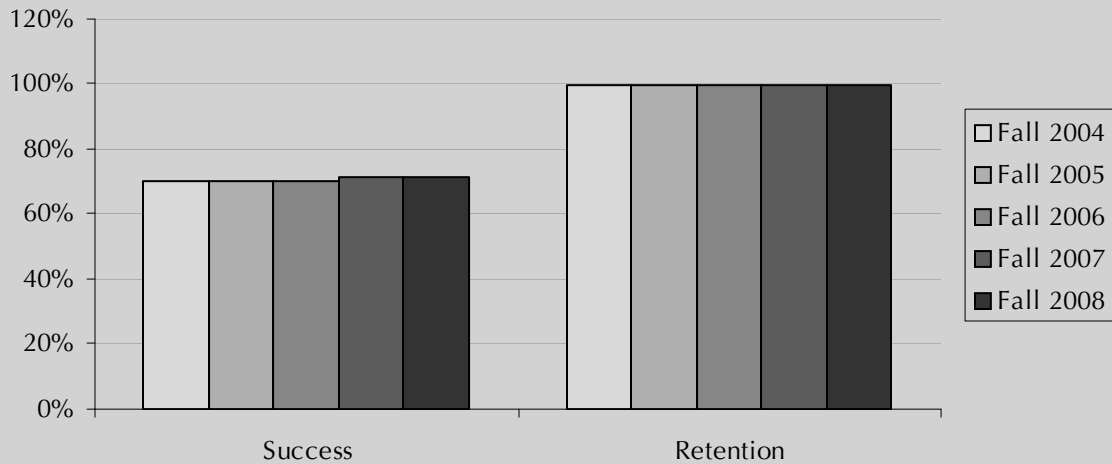


Table 6-9
Grade Distribution by
Vocational Courses

		Fall 2004	Fall 2005	Fall 2006	Fall 2007	Fall 2008
	<i>Percent</i>					
	A	31.7	33.5	34.1	33.9	34.3
	B	21.5	20.0	19.8	21.1	20.7
	C	12.9	12.3	12.2	12.4	12.4
	D	8.9	10.1	8.8	8.7	9.0
	F	0.6	0.7	1.0	0.9	0.7
	CR/P	4.2	4.2	3.9	3.7	4.2
	NC/NP	4.9	3.4	3.6	3.6	3.4
	W	0.4	0.4	0.3	0.3	0.2
	I	14.9	15.5	16.5	15.5	15.1
	Success	70.4	70.0	69.9	71.1	71.6
	Retention	99.6	99.6	99.7	99.7	99.8